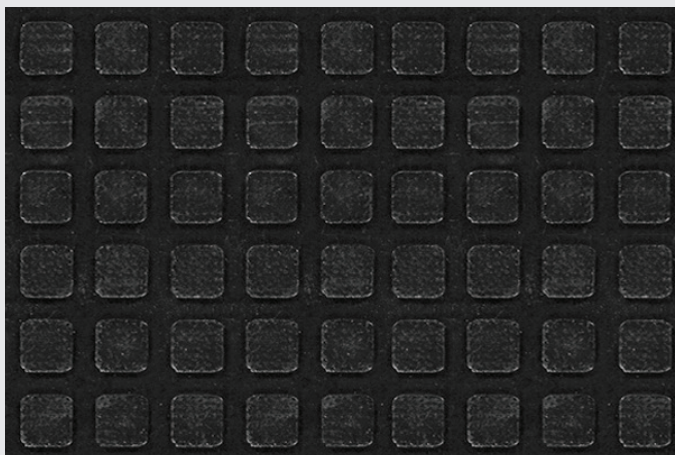




MELT STEP™

SLIP RESISTANT/WET ENVIRONMENTS/OUTDOOR



- A convenient and reliable solution for melting snow and ice from walkways to prevent slip and fall accidents
- Unique reversible design permits electrical connection on right or left side of walkway
- Water proof electrical connection system with GFCI switch prevents electrical shock hazard
- 6' power cord (120 volts) with GFCI switch as well as a 6' extension cord are both sold separately
- Up to 4 mats can be connected in sequence
- The mat will heat to approximately 40° to 45°F above ambient air temperature
- Durable molded nitrile rubber construction is water proof, UV resistant, and flexible in freezing temperatures

100%
customer satisfaction
GUARANTEED

NFSI
HIGH-TRACTION

MADE
IN THE
USA

SLIP RESISTANT/WET ENVIRONMENTS/INDOOR-OUTDOOR

MELT STEP™

One Connector Product No. 886

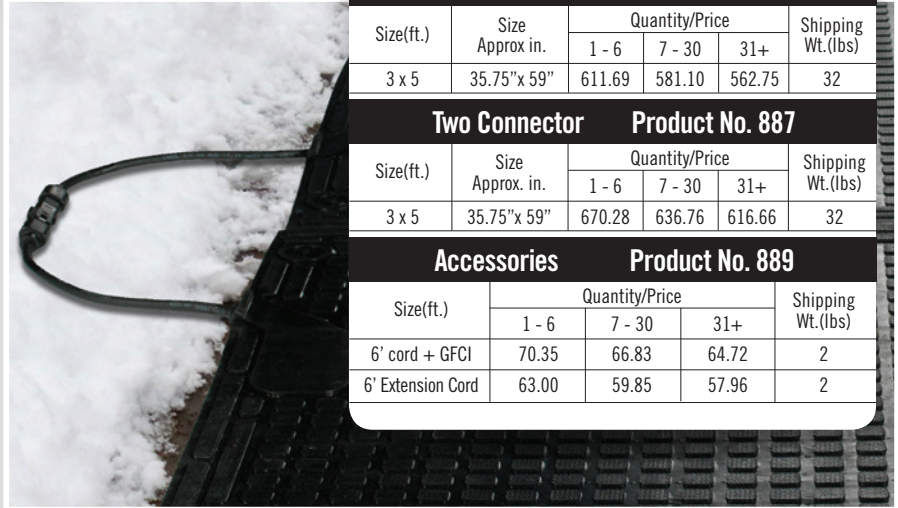
Size(ft.)	Size Approx in.	Quantity/Price			Shipping Wt.(lbs)
		1 - 6	7 - 30	31+	
3 x 5	35.75"x 59"	611.69	581.10	562.75	32

Two Connector Product No. 887

Size(ft.)	Size Approx. in.	Quantity/Price			Shipping Wt.(lbs)
		1 - 6	7 - 30	31+	
3 x 5	35.75"x 59"	670.28	636.76	616.66	32

Accessories Product No. 889

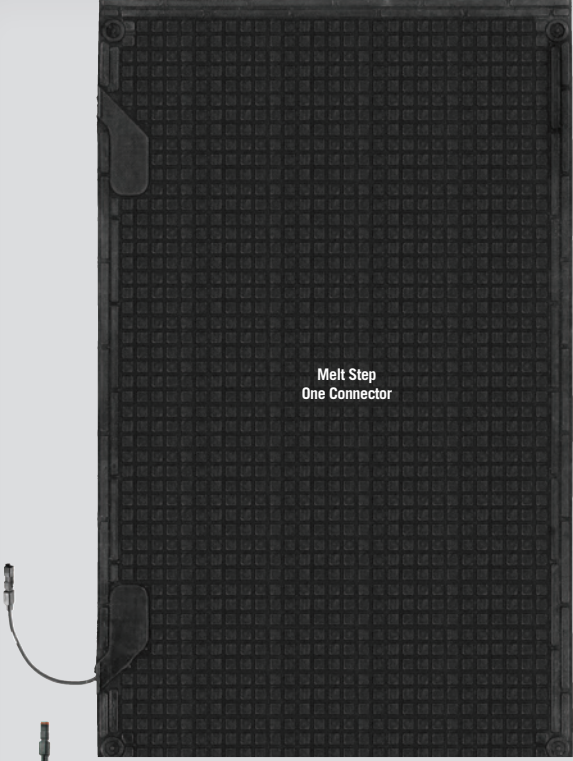
Size(ft.)	Quantity/Price			Shipping Wt.(lbs)
	1 - 6	7 - 30	31+	
6' cord + GFCI	70.35	66.83	64.72	2
6' Extension Cord	63.00	59.85	57.96	2



Melt Step
One Connector



Melt Step
Two Connector



Melt Step
6' extension cord



Melt Step
6' cord + GFCI

