



ONE SOURCE FOR MATS

BASIC INSTALLATION – Sure Stride/Sure Stride Plush Floor Matting

1. Floor must be clean and dry before installing.



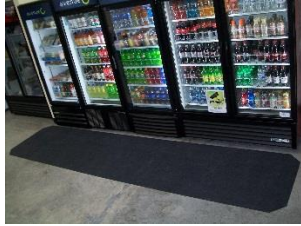
2. Cut Mat to size with safety knife, using the installation cutting tool.



3. Position mat, press and smooth mat into place using installation cutting tool.



4. Cut all 4 corners at 45° angles using cutting guides on installation cutting tool.



MAINTENANCE Replacement frequency- The durable Sure Stride Floor Matting is designed to last up to 3 months under normal traffic conditions. If the mat is installed in a high traffic area and shows obvious signs of wear or a weakened bond to the floor before the end of that time frame, it should be replaced.

NOTE: Do not pick up mat to clean the floor underneath until you are ready to replace it.

Drying – Sure Stride Floor Matting is highly absorbent and fast-drying. Absorbed water will evaporate; standard fans or floor blowers can be used to speed drying time. For extremely wet conditions, use a wet vac or extractor to remove excess water.

Cleaning- Sure Stride Floor Matting is low-profile and durable so it can be left in place during daily cleaning. Floor scrubbers, vacuums, brooms and mops pass right over without damaging the surface of the mat. Standard floor scrubbers may be used to clean floor Mat. Use low settings for water and pressure. Tougher stains may be pretreated with standard carpet cleaning products and agitated with a brush to loosen the soil.