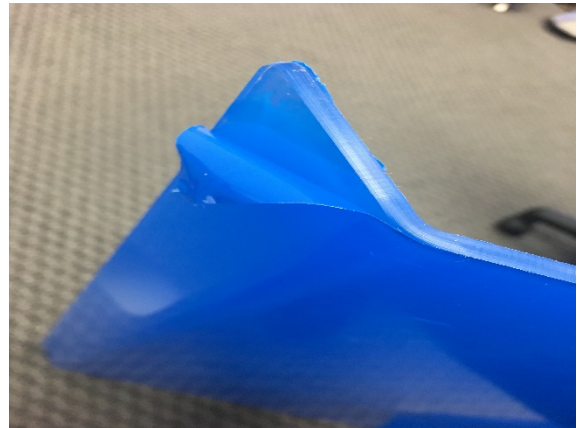




## Step-by-Step Instructions

### 751-3 - Portable Metal Frame Sneezeguard

**Step 1:** Peel off the blue protective tape on both sides being careful not to scratch.



**Step 2:** Set both stands so that they face each other, as pictured.

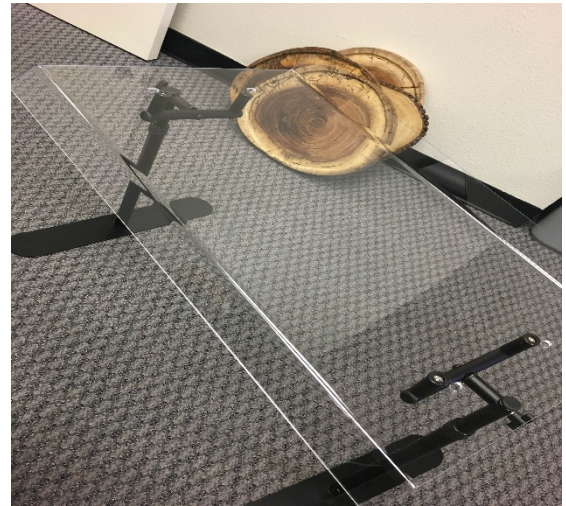


**Step 3:**

Unscrew the 4 white screws on the top of the stands



**Step 4:** Gently place sneezeguard shield on the stands, and continue to insert the white screws back to their original positions.



**Step 5:** Loosen left and right wingnuts until sneezeguard is in desired position, and then tighten.



**Step 6:** Loosen left and right tensioner to adjust height to desired position, then tighten.

That's It!



**Still have questions? Call our customer service team!  
PH: 760.630.5100 | TOLL FREE: 800.321.9069**