



**DETECTO SCALE  
DL Series Scales**

**DLX PC Utility  
Setup and  
Procedures**

8529-0638-0M Rev A  
10/16

CARDINAL SCALE MFG. CO.  
PO BOX 151 • WEBB CITY, MO 64870  
PH (417) 673-4631 • FAX (417) 673-5001  
[www.detecto.com](http://www.detecto.com)

Technical Support: Ph: 866-254-8261 • [tech@cardet.com](mailto:tech@cardet.com)



# TABLE OF CONTENTS

INSTALLATION OF THE SCALE UTILITY .....	1
Home Screen Layout .....	1
CONNECTING TO THE SCALE .....	2
Establishing an Ethernet Connection .....	2
Through the LAN .....	2
Via a Direct Connection .....	2
Setting a Static IP Address for the Scale .....	4
Establishing an RS-232 Connection .....	4
RETRIEVING INFORMATION FROM THE SCALE .....	5
Using a USB Drive .....	5
Using Ethernet .....	6
TRANSFERRING DATA TO THE SCALE .....	7
Using USB .....	7
Using RS232 .....	8
Using Ethernet .....	9
PRICE LOOK UP (PLU) NUMBERS .....	10
Description of Most Commonly Used PLU Settings .....	10
Creating and Editing a PLU .....	10
Cloning PLUs .....	12
Assigning PLUs to Quick Keys .....	13
SCALE PARAMETERS .....	15
Spec Parameters .....	15
Global Text Parameters .....	16
Bitmap Builder .....	16
Custom Print Formatting .....	17



# INSTALLATION OF THE SCALE UTILITY

## If Autorun is Enabled:

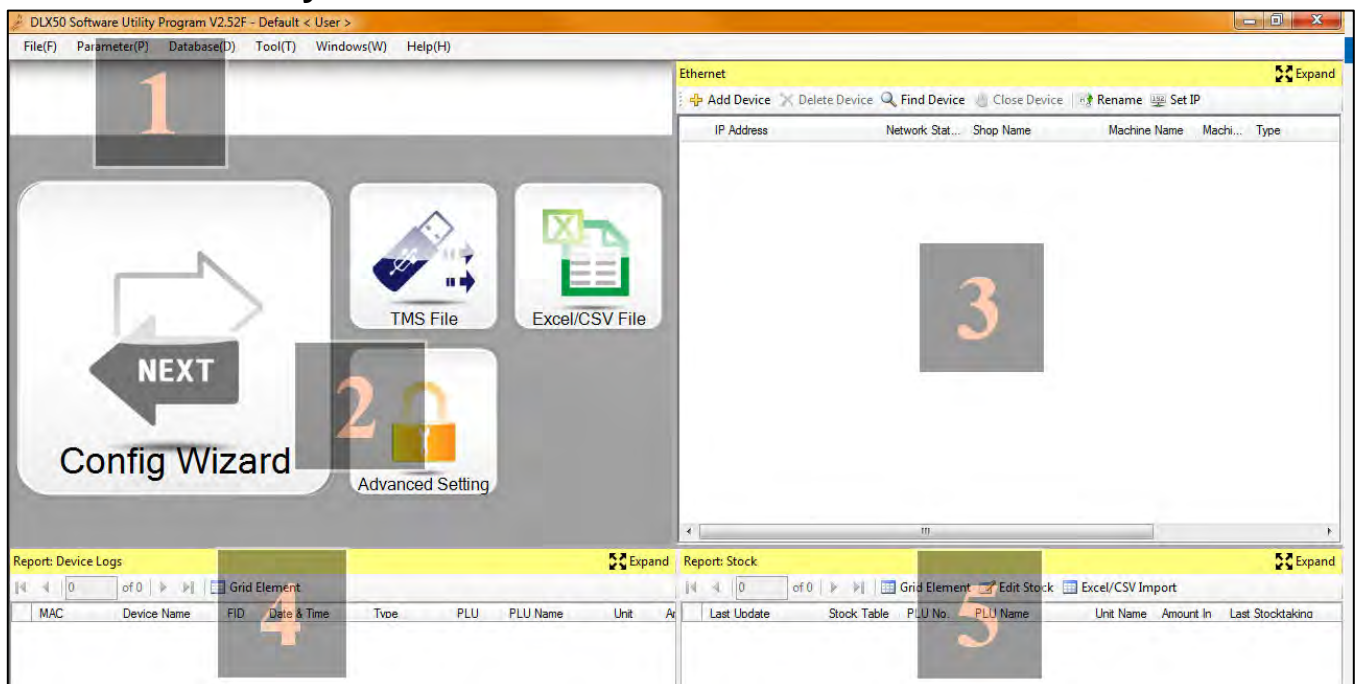
Step 1: Start your computer.

Step 2: Insert DLX50 DL Series Scale Utility Disk into CD/DVD drive.

Step 3: If Autorun is enabled on the computer, follow the installation prompts. If Autorun is NOT enabled, double-click the “setup” Windows Installer and follow the installation prompts.



## Home Screen Layout



#1: Data editing and creation as well as setup modification.

#2: Data and setup transfer via USB, or RS232, or Excel/CSV file.

#3: Data and setup transfer via Ethernet.

#4: Log of individual weighments. Requires Ethernet connection for use.

#5: Stocking report. Requires Ethernet connection and not commonly used by the DL Scale.

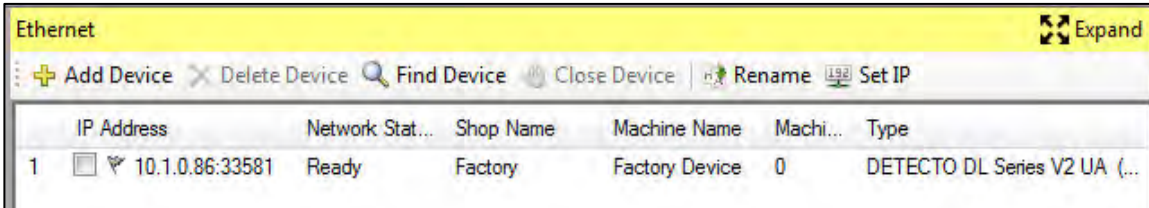
# CONNECTING TO THE SCALE

## Establishing an Ethernet Connection Through the LAN

Step 1: With the scale turned off, connect an Ethernet cable to the Ethernet port on the DL Scale and to the nearest network router/switch.

Step 2: Open the DLX50 scale utility on the PC.

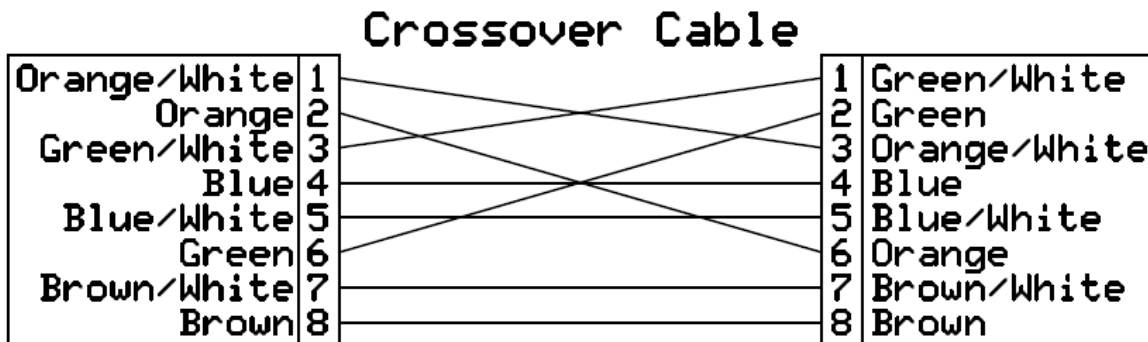
Step 3: With the utility at the home screen, turn on the DL scale. The device should automatically show up in the Ethernet window of the home screen.



**NOTE:** The DL Series scales default to obtaining an IP address via DHCP protocols.

## Via a Direct Connection

If no existing network is available, the DL Scale can communicate via Ethernet to a laptop or other PC that has the DLX50 Utility installed. This connection requires an Ethernet crossover cable connecting the PC to the DL Scale:



Step 1: Establish/Verify a static IP address for the PC. This procedure can be found at the following address:

<http://windows.microsoft.com/en-us/windows/change-tcp-ip-settings#1TC=windows-7>

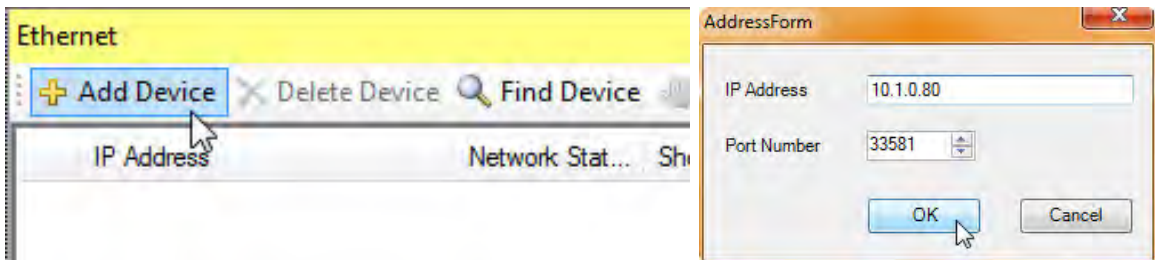
This procedure specifies Windows 7, but is also the same procedure for Windows XP, 8, and 10. Make a note of the IP address, subnet mask, and default gateway for use in Step 2.

Step 2: Access the spec parameters of the scale by pressing Prog -> 1 -> 2. In the Weight display is the number of the spec parameter currently being viewed. This initially comes up as SP.000 for spec parameter 000. Using the V4 (→) key, toggle through the parameters until SP.150 is reached. Using the table below, change the necessary settings, pressing **V4** to move to the next setting. Press **Amend** when these settings have been changed.

Parameter	Setting (indicated by the X)
SP.150	X . _ . _ . _ same as IP address of the PC
SP.151	_ . X . _ . _ same as IP address of the PC
SP.152	_ . _ . X . _ same as IP address of the PC
SP.153	_ . _ . _ . X <i>different</i> from IP address of the PC
SP.158	X . _ . _ . _ Default Gateway same as IP address of PC
SP.159	_ . X . _ . _ Default Gateway same as IP address of PC
SP.160	_ . _ . X . _ Default Gateway same as IP address of PC
SP.161	_ . _ . _ . X Default Gateway same as IP address of PC
SP.162	X . _ . _ . _ Subnet Mask same as Subnet Mask of PC
SP.163	_ . X . _ . _ Subnet Mask same as Subnet Mask of PC
SP.164	_ . _ . X . _ Subnet Mask same as Subnet Mask of PC
SP.165	_ . _ . _ . X Subnet Mask same as Subnet Mask of PC

Step 3: From the DLX50 Utility, select +Add Device and enter the IP address as set in the scale in Step 2.

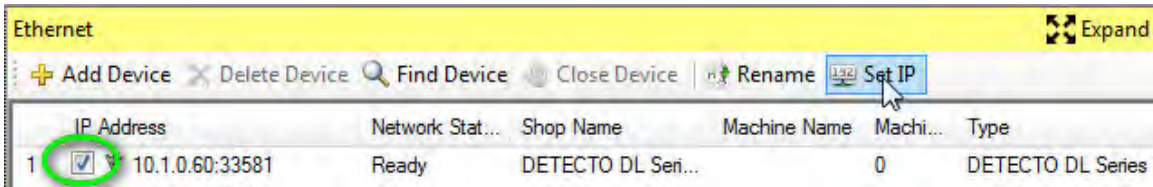
Verify the port number is set to 33581. Click OK.



## Setting a Static IP Address for the Scale

If desired, a static IP address may be set from the DLX50 PC Utility.

Step 1: Check the DL scale on the network to be changed and click “Set IP.”

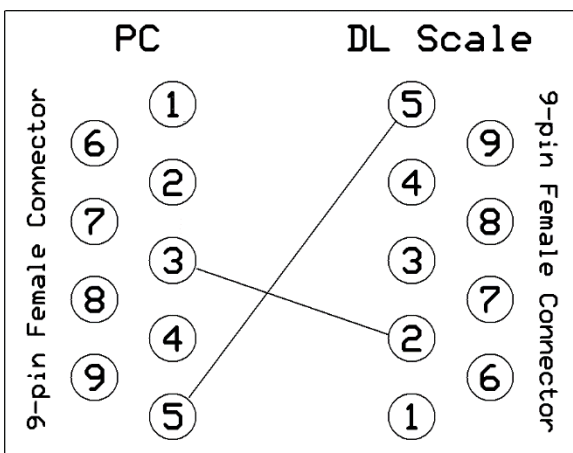


Step 2: Select “Use the following IP address.” Set the desired network settings and click “OK.” There is now a static IP address set for the selected scale.



## Establishing an RS-232 Connection

To use an RS232 connection, the connecting cable needs to have two DB-9 serial connectors wired as follows:



Detecto part number 8545-B099-0A works in this application.



# RETRIEVING INFORMATION FROM THE SCALE

Data can be retrieved from the scale for data backup, creating a duplicate setup in a different scale, or to upload data for editing and reloading. This can be done via an USB drive or over an Ethernet connection.

## Using a USB Drive

Step 1: Insert USB drive into scale.

Step 2: From scale press **Prog -> 4 -> 1** and then enter the three digit file number into the Total Price window that the file will be saved as. Press **Amend**.

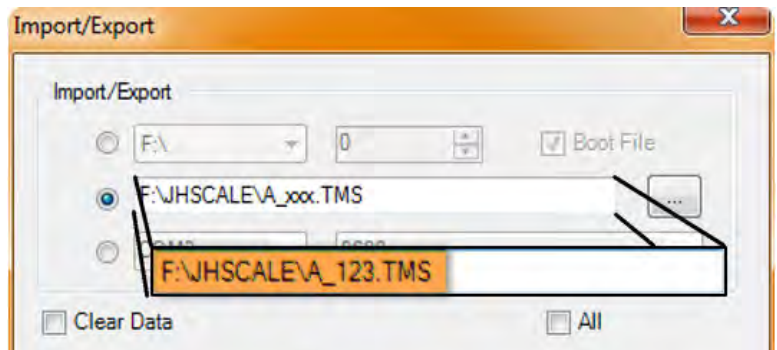
Step 3: Remove USB drive from scale. File will be saved on that USB drive under folder JHSCALE as file name A\_xxx.TMS (where xxx is the three digit file number that was assigned). If inputting into DLX50 software utility, proceed to step 4. If transferring to another scale, see "Transferring Data to the Scale."

Step 4: Insert USB drive into PC.

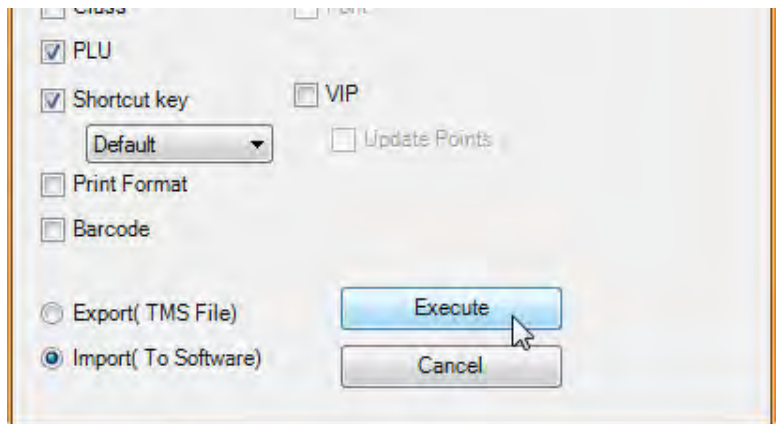
Step 5: Click one of the TMS File buttons.



Step 6: Select the middle Import/Export option and verify the drive designation is correct (F drive shown). Change the xxx in the box to the three digit file number that the importing file is be saved as.



Step 7: <sup>1</sup>Verify the proper items are checked for importing,  
<sup>2</sup>be sure Import is selected and  
<sup>3</sup>click Execute.



## Using Ethernet

Step 1: From either the PLU, Print Format, Barcode, Spec, Global Text, or Shortcut Key screens click on the Ethernet icon.

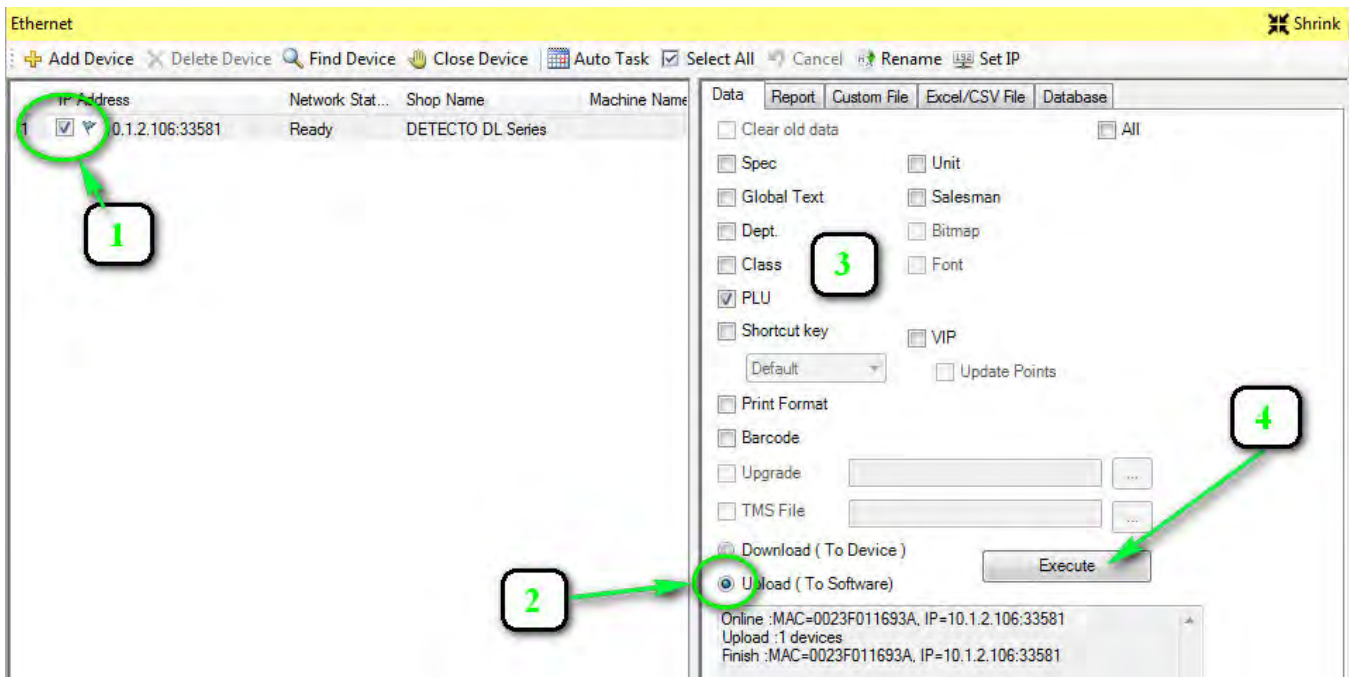


Step 2: In the Ethernet window,

<sup>1</sup>select the scale to retrieve the data from,

<sup>2</sup>select Upload,

<sup>3</sup>verify and select which parameters are to be retrieved, and <sup>4</sup>click Execute.



Step 3: All selected parameters are now available to be viewed and edited within the DLX50 PC Utility.

# TRANSFERRING DATA TO THE SCALE

## Using USB

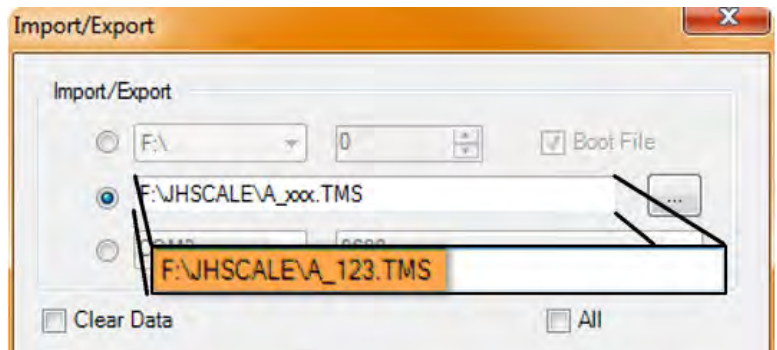
**NOTE:** If the TMS file is already on the USB drive, skip to step 6.

Step 1: Insert USB drive into PC.

Step 2: Click one of the TMS File buttons.



Step 3: Select the middle Import/Export option and verify the drive designation is correct (F drive shown). Change the xxx in the box to the three digit file number that the file will be saved as.



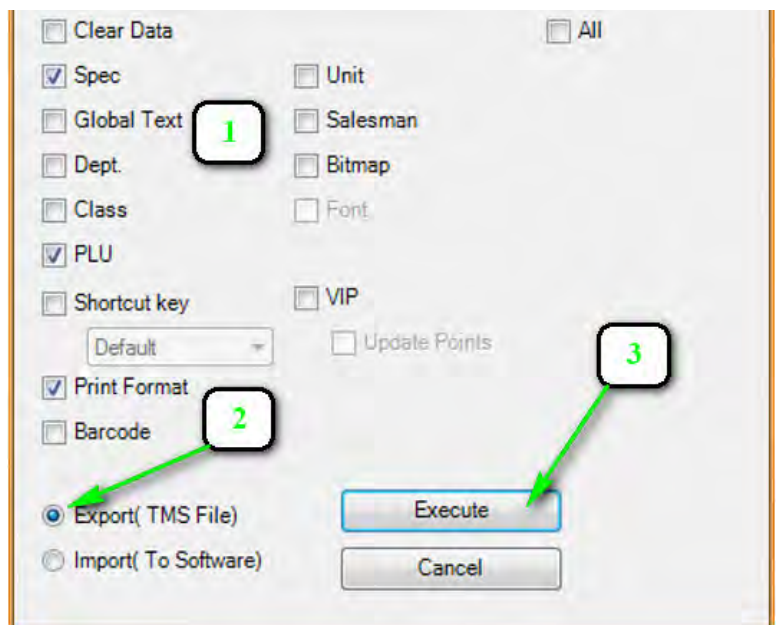
Step 4: <sup>1</sup>Verify the proper items are checked for exporting, <sup>2</sup>be sure Export is selected and <sup>3</sup>click Execute.

The file is now saved to the USB drive under folder JHSCALE and as the file name specified when exporting.

Step 5: Remove the USB drive from the PC.

Step 6: Install USB drive into the DL Scale.

Step 7: Press **Prog** -> **4** -> **1** and enter the file number to be downloaded into the scale (number will be displayed in the Total Price window of the DL Scale). Press the **Accu/Confirm** key.



Step 8: When the dot matrix screen reads Download Finish, press **Sale** to return to the normal weighing mode and remove the USB drive from the scale.

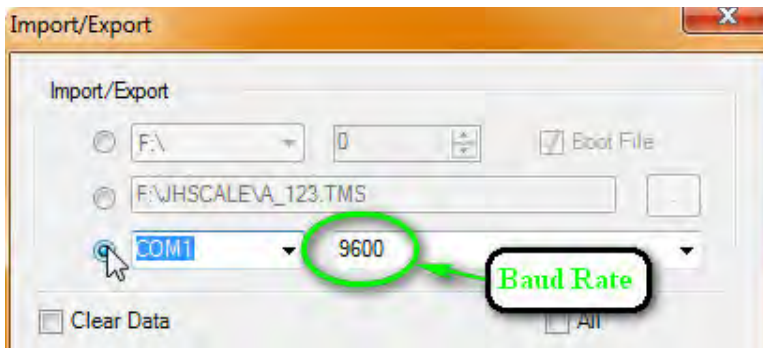
## Using RS232

Step 1: On the DL Scale, press Prog -> 4 -> 3. The scale display will say "Download Please Wait." It is ready to receive information from the DLX50 Utility.

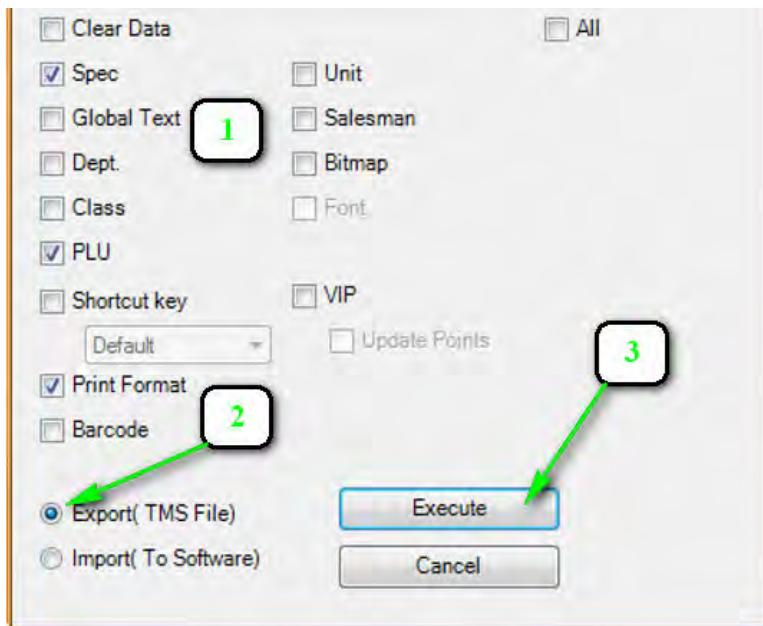
Step 2: From the PC utility, click one of the TMS File buttons.



Step 3: Select the bottom button for RS232 communication and verify the COM port number and baud rate are correct.



Step 4: <sup>1</sup>Verify the proper items are checked for exporting, <sup>2</sup>be sure Export is selected, and <sup>3</sup>click Execute.



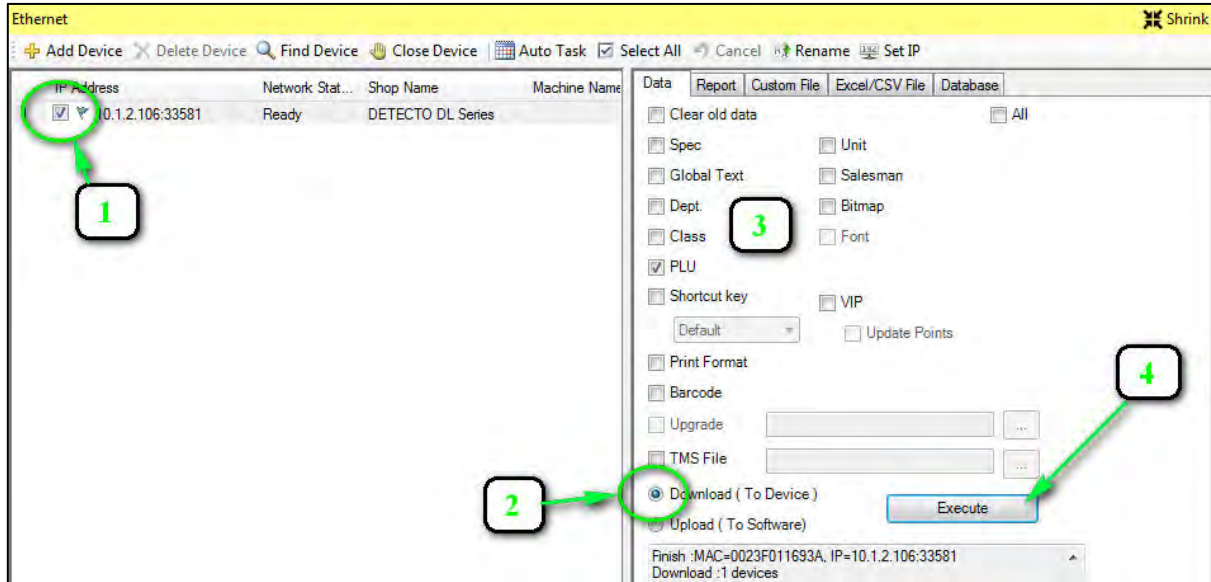
Step 5: When the dot matrix screen reads Download Finish, press Sale to return to the normal weighing mode.

## Using Ethernet

Step 1: From either the PLU, Print Format, Barcode, Spec, Global Text, or Shortcut Key screens click on the Ethernet icon.



Step 2: In the Ethernet window, <sup>1</sup>select the scale to transfer the data to, <sup>2</sup>select Download, <sup>3</sup>verify and select which parameters are to be loaded, and <sup>4</sup>click Execute.



Step 3: All transferred information is now part of the settings of the DL Scale.



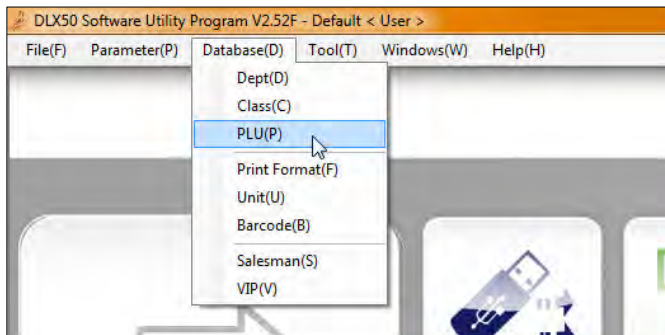
# PRICE LOOK UP (PLU) NUMBERS

## Description of Most Commonly Used PLU Settings

Number	Numeric designation for the PLU
Import/Export	Selection if the PLU is to be imported/exported with other PLUs
Name	Name of the product the PLU represents
Item Code	Can be different than PLU number, Item Code is used for the first part of the default barcode
Unit	Weighing unit, for best results, set to either “6 - lb” (weighed items) or “2 - pcs” (counted items)
U. Price	Price per the unit designated in previous setting
Tare	Container or other tare weight associated with weighing the PLU
Print Format	(Print Info tab) Numeric selection of print format, only changed if using a custom print format
Barcode Format	(Print Info tab) Numeric selection of barcode format, only used if using custom barcode format
Text 1	Information for the text box, requires the 6600-3002 (CAS 8020) label or a custom label
Print Package Date	Date the label was printed
Print Shelf Date	Last date product should be on the “shelf,” this is the Package Date plus Shelf Days
Shelf Days	Number of days the product is to remain on the “shelf” available for sale

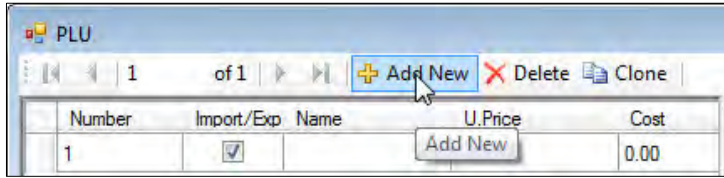
## Creating and Editing a PLU

Step 1: Click Database -> PLU.

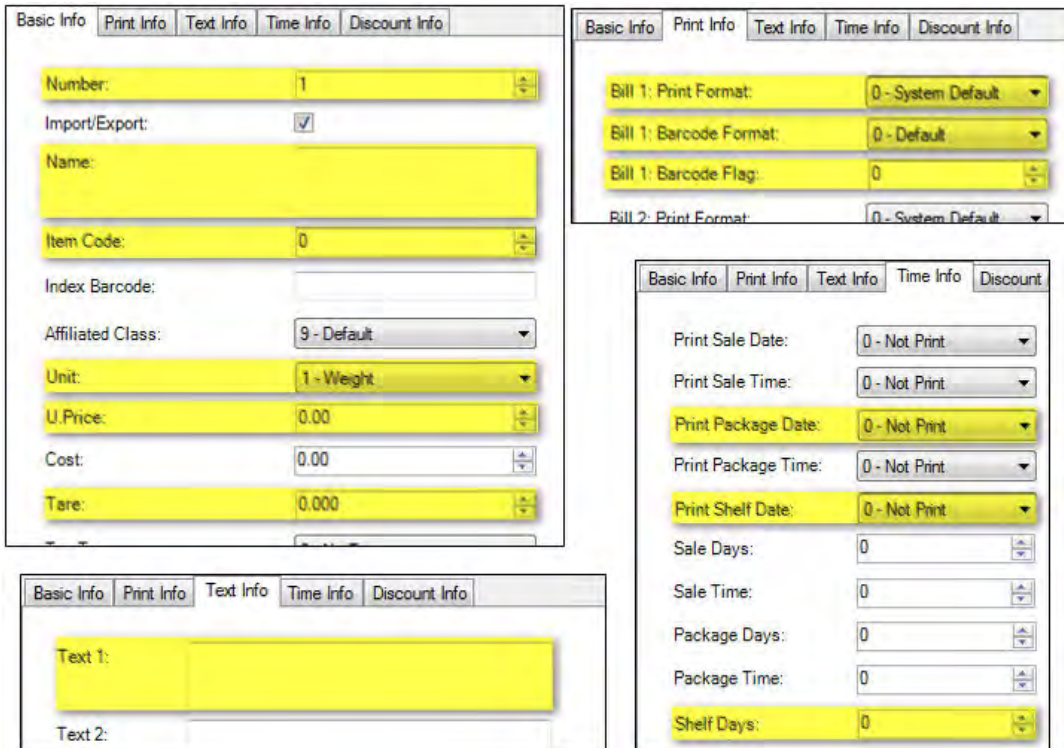


If any PLUs have been created and/or imported into the software, a list of them will be in the left of the window that opens. To edit a PLU, skip step 2.

Step 2: To create a new PLU, click Add New. This will create a PLU with an automatically assigned number.



Step 3: Click the PLU to enter/edit information for. The information for the PLU is displayed and edited in the right half of the window. The most common applicable settings the DL scale uses for the PLUs are highlighted below.

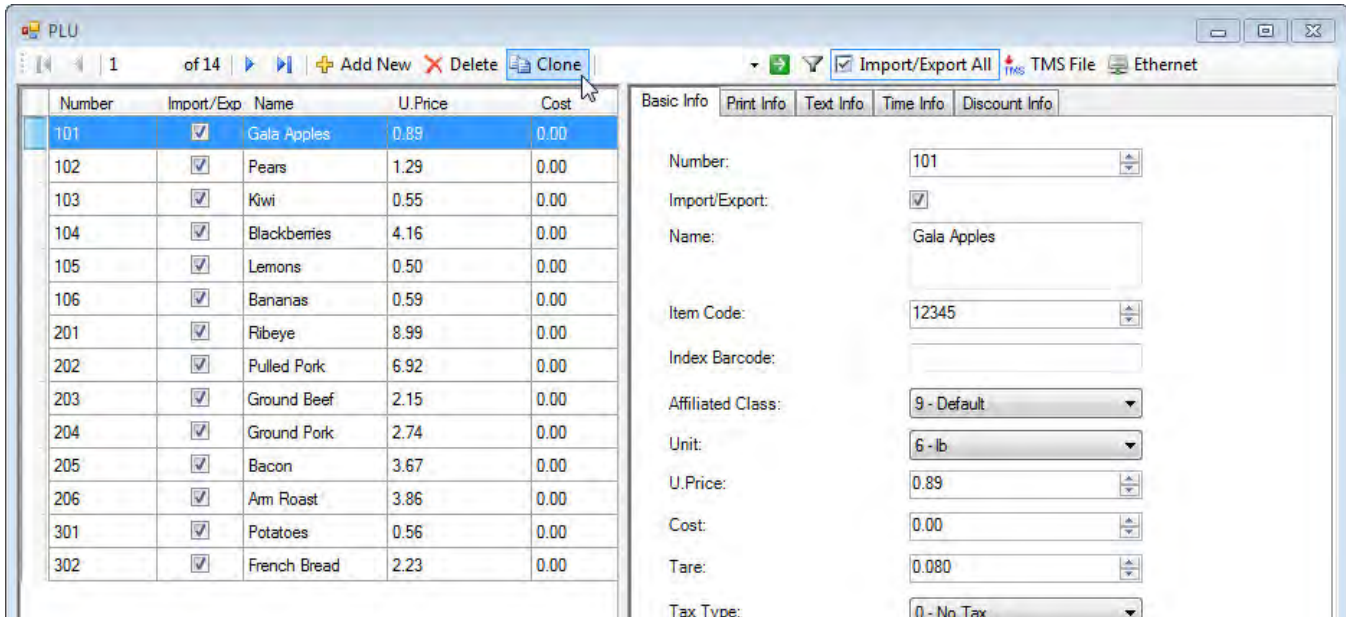


Once these settings are changed, they are ready to be exported (see “Transferring Data to the Scale”).

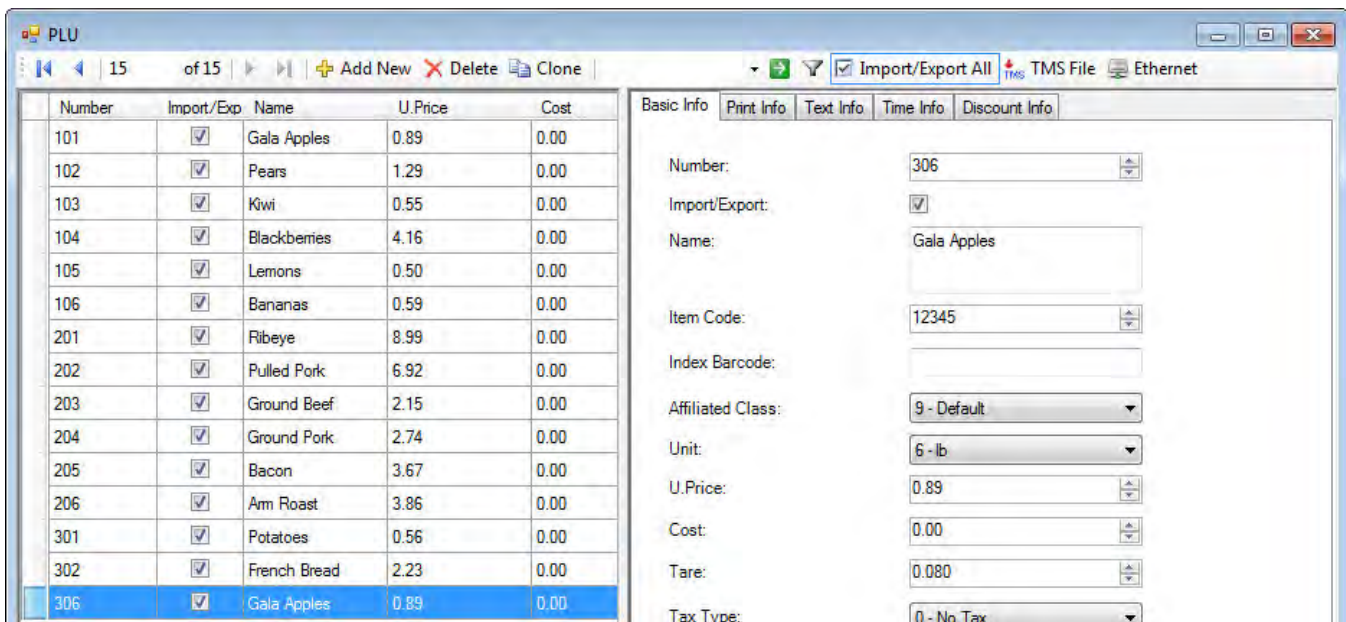
## Cloning PLUs

In an instance where a new PLU will have very similar settings to an existing PLU, it may be faster and easier to clone an existing PLU than to create a new PLU as above. For example: if 2 items have the same unit, tare weight, custom print and barcode formats, and the same number of shelf days, cloning allows for these settings to already be populated in the new PLU.

Step 1: Select the PLU that will be cloned. Make this selection based on the number of similarities between that PLU and the new one. In this case, we will be cloning Gala Apples to create a PLU for Fuji Apples. Click Clone.

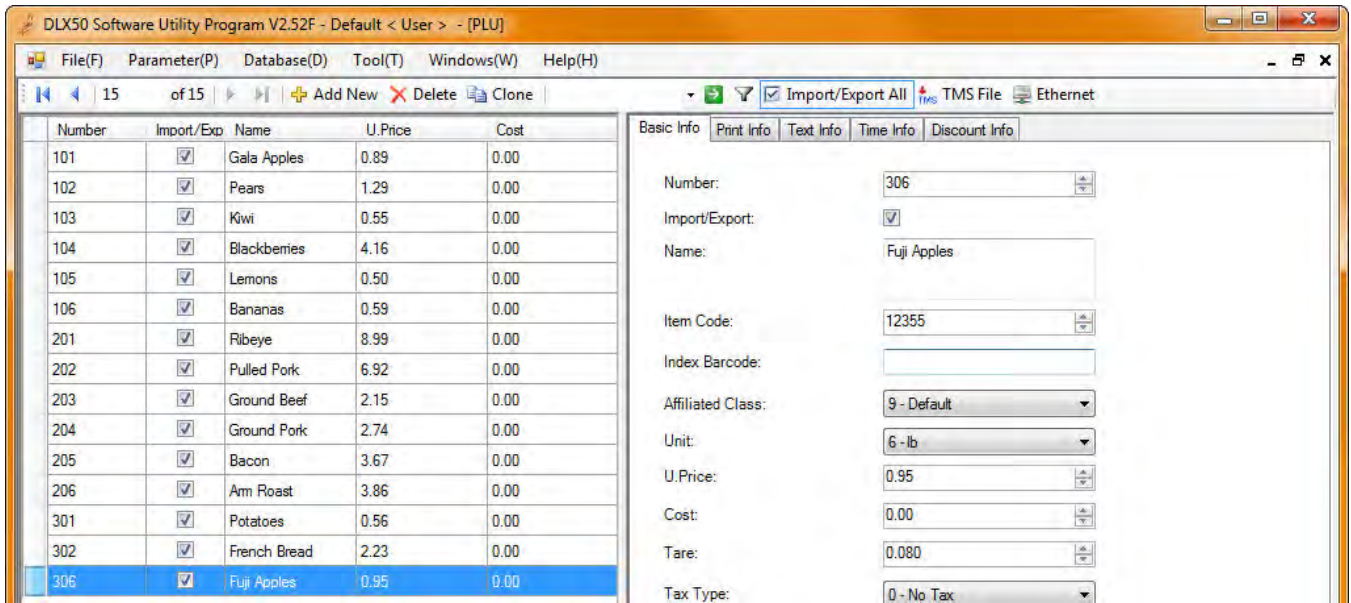


This will create a duplicate of the selected PLU and automatically assign it a new PLU.





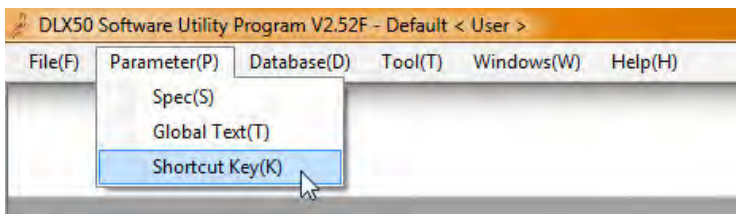
Step 2: Make necessary changes. In the example, only a few things needed to be changed instead of everything needing to be created from nothing.



Once these settings are changed, they are ready to be exported (see “Transferring Data to the Scale”).

## Assigning PLUs to Quick Keys

Step 1: Click Parameters -> Shortcut Key from the menu bar.



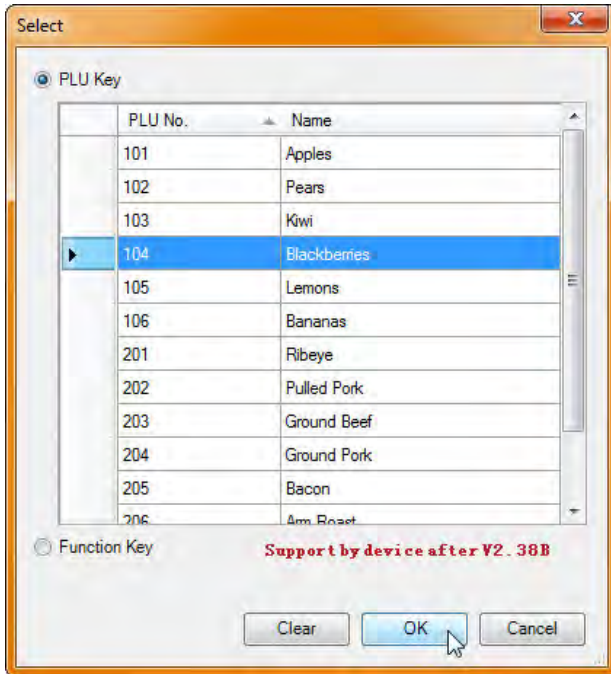
This will bring up a window with a graphic display of the PLU keys.

Step 2: Set up the necessary shortcut key parameters. For Layout, one of the “12’s Bar Cody Printing Scale” options will be used. Select between the Pole or No Pole versions. Also, determine if one or two PLUs will be utilized per key. **NOTE: the second PLU is accessed during operation by pressing Shift then the appropriate PLU key.**

Step 3: Select the shortcut key to be assigned.

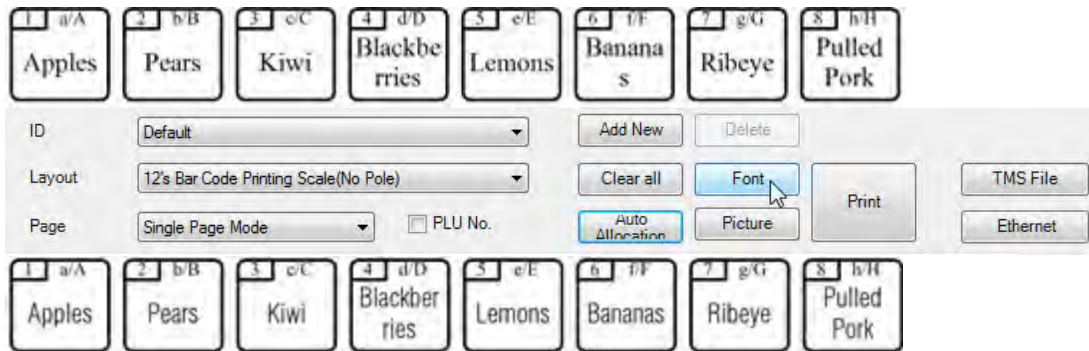


Step 4: Select the PLU number to be assigned to the shortcut key and click OK.



The PLU is now assigned to the shortcut key. When all of the required shortcut keys are assigned, they can be exported to the scale (see “Transferring Data to the Scale”).

Step 5: If required, the font style and size can be changed by clicking the Font button.



Step 6: Once these keys are assigned, they are ready to be exported (see “Transferring Data to the Scale”).

Step 7: To print this sheet, simply click Print and the layout will be sent to the printer where it can be cut out and slipped into the overlay slot over the shortcut keys.

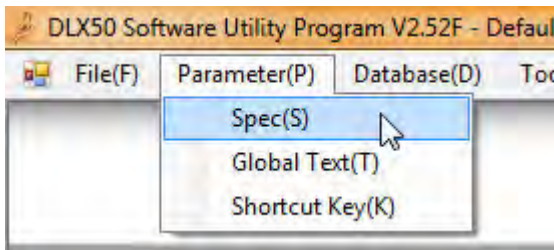
# SCALE PARAMETERS

## Spec Parameters

**IMPORTANT NOTE: USE CAUTION WHEN CHANGING SPEC PARAMETERS. IF A SETTING IS UNINTENTIONALLY CHANGED IT COULD GREATLY AFFECT THE OPERATION OF THE SCALE, CAN BE VERY DIFFICULT TO DIAGNOSE, AND COULD REQUIRE THE INDICATOR TO BE RESTORED TO FACTORY DEFAULTS. ANY PARAMETER THE USER IS NOT CONFIDENTLY FAMILIAR WITH SHOULD NOT BE CHANGED.**

The Spec Parameters contain many settings that do many various things. Here, Ethernet IP addresses can be changed, print formats can be set, and barcode information can be modified (among many other things). These steps will demonstrate how to change the baud rate of the RS232 port for the scale.

Step 1: From the menu bar, click Parameter -> Spec. This will open up the Spec parameter screen.



Step 2: Scroll down to the RS232 Baud Rate parameter (#41).

40	Device Number(0~9999999)	0	<input type="checkbox"/>
41	RS232 Baud Rate	5:9600	<input type="checkbox"/>
42	USB-Disk Auto Update	1:Auto Update	<input type="checkbox"/>

Step 3: Check the box in the Import/Export column and select the proper baud rate.

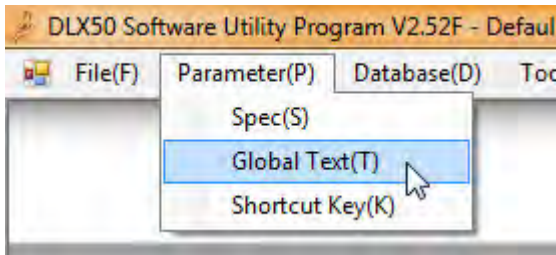
0		<input type="checkbox"/>
5:9600		<input checked="" type="checkbox"/>
0:300		<input type="checkbox"/>
1:600		<input type="checkbox"/>
2:1200		<input type="checkbox"/>
3:2400		<input type="checkbox"/>
4:4800		<input type="checkbox"/>
5:9600		<input type="checkbox"/>
6:19200		<input type="checkbox"/>
7:38400		<input type="checkbox"/>
8:57600		<input type="checkbox"/>
9:115200		<input type="checkbox"/>

Once these settings are changed, they are ready to be exported (see “Transferring Data to the Scale”).

***NOTE: Only the Spec Parameters with the Import/Export box checked will be exported.***

## Global Text Parameters

Most of the Global Text Parameters are settings that will commonly apply universally to all labels. Examples are the store name, device name and some custom text options. To access the Global Text Parameters, from the menu bar click Parameter -> Global Text.

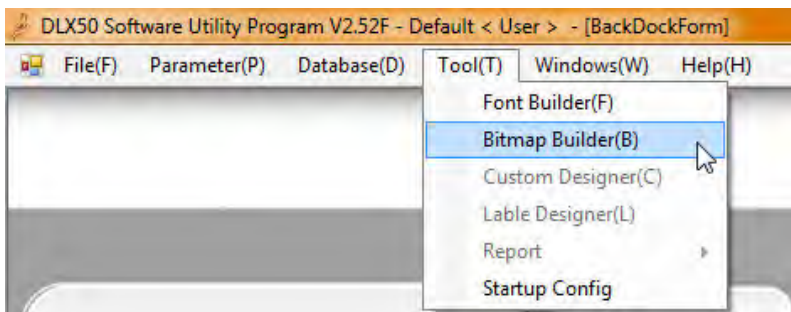


The procedure for changing these settings is identical to that for changing the Spec Parameters.

## Bitmap Builder

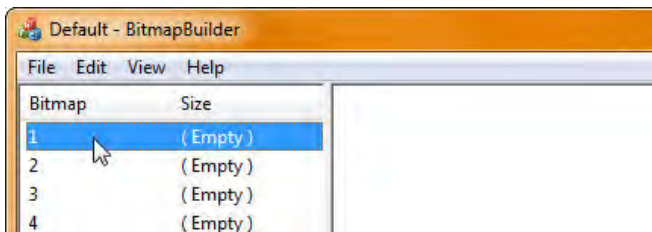
This application within the DLX50 PC Utility is used to import and store custom graphics that are in a black and white bitmap format.

Step 1: From the menu bar, click Tool -> Bitmap Builder.



A list of bitmap images and corresponding file sizes are at the left of the window.

Step 2: To insert a bitmap image, double-click the number to assign the bitmap to.

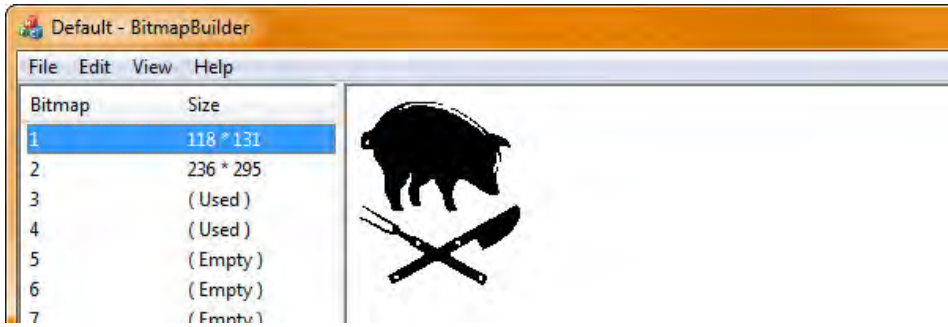


This will bring up a window to browse for the applicable bitmap image.

Step 3: Select the file, click Open. This will populate the bitmap number with image which is displayed in the right portion of the window.

**NOTE:** If the new image brought into the Bitmap Builder is relatively large, one or more of the bitmap storage slots might say "(Used)" in the size column. This indicates that the image took up more memory than allocated for an image and is using the memory of multiple slots.

Step 4: When finished, click the X in the upper right of the window and select YES on the popup window.

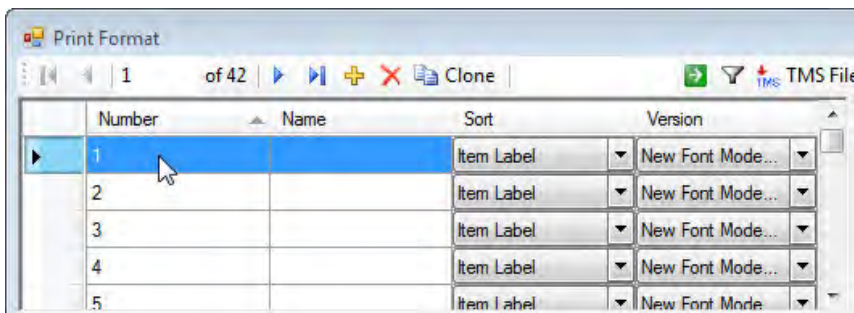


## Custom Print Formatting

The print formats for the DL Scales are very customizable. It would be difficult to show all of the capabilities of this print formatting utility in detail, so an overview will be given here through an example of modifying the standard default label to include a graphic instead.

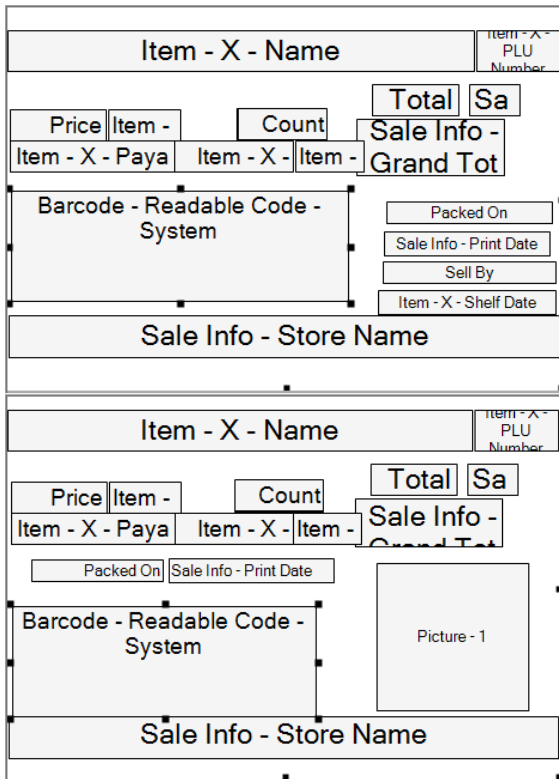
Step 1: Import Print Format parameters from the scale. Refer to “Retrieving Information from the Scale” for this procedure.

Step 2: Print format #1 is the default layout that prints on the standard blank label that comes with the DL Scale. Select 1 from the upper left.





This brings up a graphic representation of the label layout for label format 1. Below is this representation of the before and after labels as well as their actual printing in the center.



Some items that were changed were modified as follows:

Item	Change	Procedure
“Sell By” text and Shelf Date	Deleted	Click on item box, press Delete on keyboard OR select from list to left of graphic and click the red X above the list
“Packed On” text and Print Date	Moved individually	Click and drag each item box to desired location
Pricing information, PLU, and Item Name	Moved as a group	Click multiple boxes while holding Shift key to select multiple items. Click and drag one of the items to move entire group
Barcode	Narrowed	Click on item box, click and drag black squares surrounding item to adjust height and width.
“Packed On” text and Print Date	Text right justified, date left justified	Click on item box to select, change Snap setting to right of graphic to Middle Right and Middle Left respectively
Picture	Inserted	Click yellow “+” above item list, double-click new item, select item type (Picture), and option(s) for that item (Picture prompts for bitmap image number)



