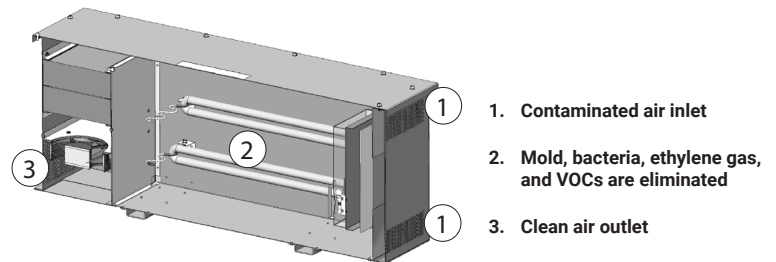
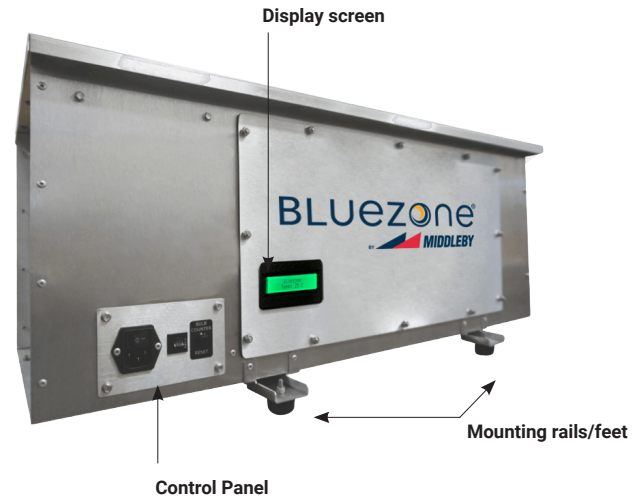


2400

Food Preservation for Walk-in Coolers

Features and Benefits

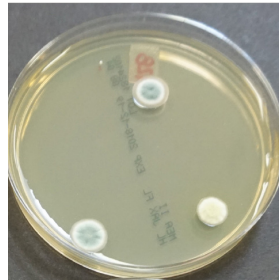
- Utilizes UV enhanced oxidation to clean the air
- Used for fresh preservation of fruits and vegetables by the U.S. Military and U.S. Navy
- Safe for personnel and produce
- Eliminates 99.9% of mold and bacteria as well as ethylene gas in walk-in refrigerators to extend shelf life and reduce waste
- Eliminates Volatile Organic Compounds (VOCs) that are absorbed by nearby products, causing unpleasant transfers of flavor and odors
- Controls monitor temperature and adjust to optimize performance and save bulb life
- Treats up to 15,000 cubic feet of air per unit
- Easy to clean – no contaminated filters to replace
- Display screen indicates status, including bulb operation and bulb life counter
- Easy to install – mounts to ceiling or wall or place on shelf
- Bulb life up to 8,800 hours or one year of continuous operation
- IoT compatible with OpenKitchen (ConnectWare required)
- One-year limited warranty



Microbial Sampling with and without Bluezone by Middleby

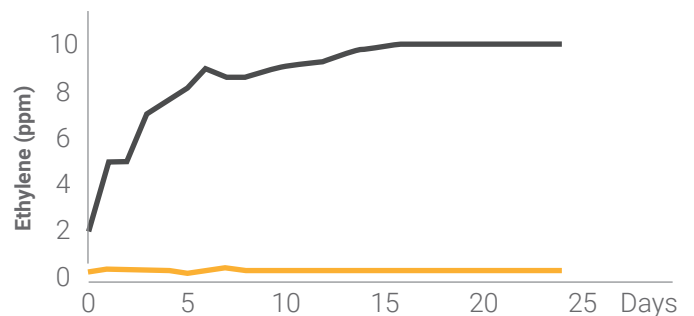


Without Bluezone by Middleby
Very high microbial load



With Bluezone by Middleby
Low microbial load

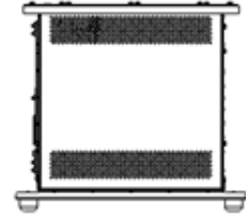
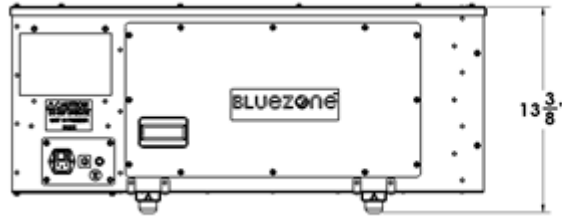
Eliminates Ethylene and Odors



Ethylene Measurements with and without Bluezone by Middleby

2400

Food Preservation for Walk-in Coolers



SPECIFICATION CATEGORY MODEL 2400 FOOD PRESERVATION	
Size	31" X 14" X 13.375" (79 cm X 36 cm x 34 cm)
Weight	25 lb. (11 kg.)
Input Voltage and Current	120 VAC, 1-phase, 3 amps 240 VAC, 1-phase, 1.5 amps
Electrical Connection	IEC 320-C13, 120 VAC power cord
Operating Environment	34°F-104°F (1°C- 40°C) Up to 85% Relative Humidity (RH)
Storage Environment	-40°F-150°F (-20°C- 65°C) Up to 85% Relative Humidity (RH)
Treatment Volume	15,000 cubic feet 425 m ³ per unit
Flow Rate	30 CFM
Power	Max 250 watts
Certifications	cETLus Listed, NSF/ANSI 2 Sanitation ARB certified (ozone emissions)
Mounting Options:	Hung from ceiling, placed on shelf/rack/cart, or mounted to wall
Shipping	Carton Measurements: 36" X 20" X 20" (91cm X 51cm X 51cm) Total Shipping Weight: 28 lb. / 13 kg.