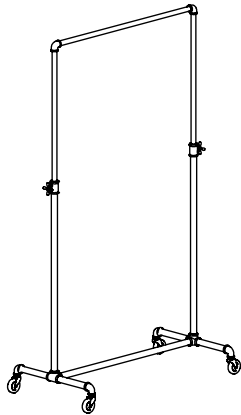
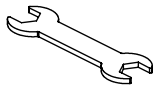


ASSEMBLY
INSTRUCTIONS FOR:
PSBB60ADJ



ASSEMBLED VIEW

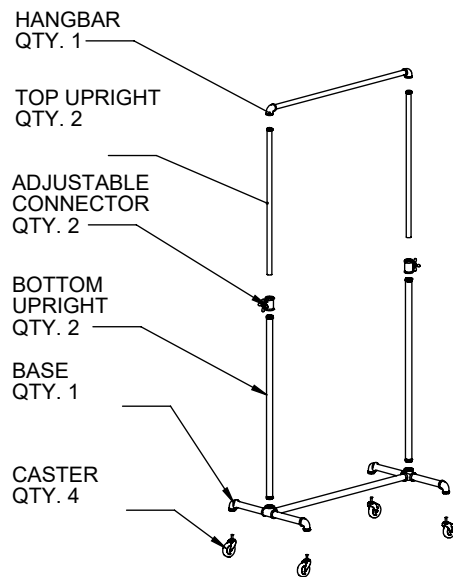
TOOLS INCLUDED



WRENCH

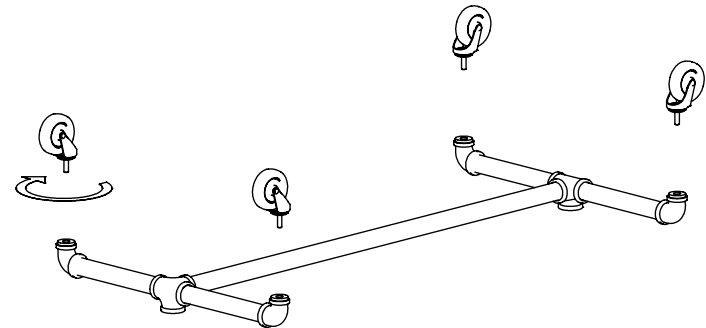


ALLEN KEY



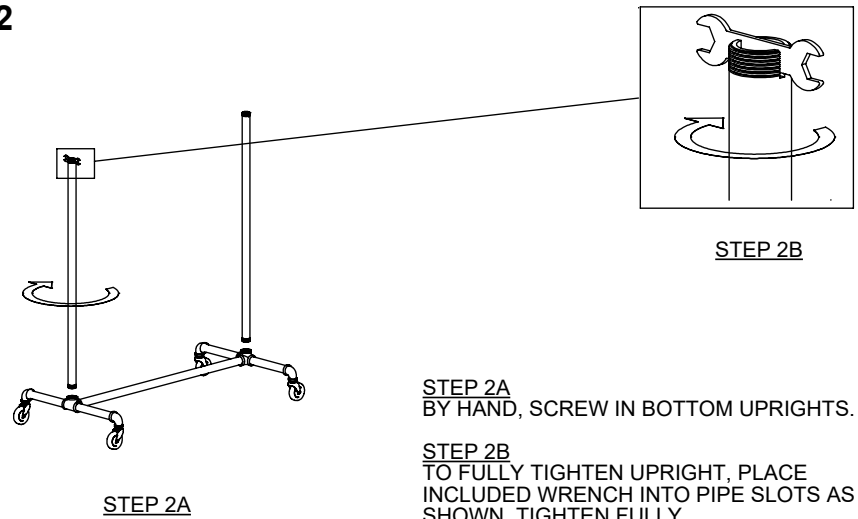
EXPLODED VIEW

1



SCREW IN THE CASTERS TO THE BASE AS SHOWN USING PROVIDED WRENCH.

2



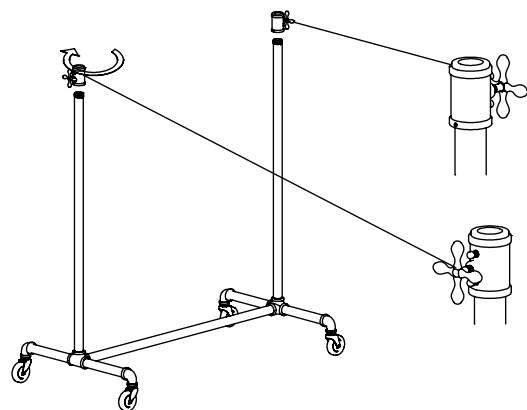
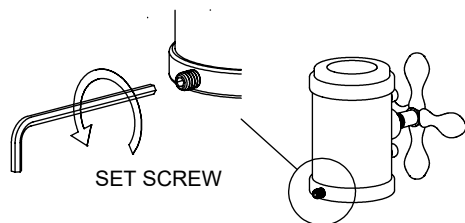
STEP 2B

STEP 2A
BY HAND, SCREW IN BOTTOM UPRIGHTS.

STEP 2B
TO FULLY TIGHTEN UPRIGHT, PLACE INCLUDED WRENCH INTO PIPE SLOTS AS SHOWN. TIGHTEN FULLY

3

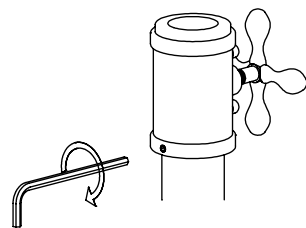
WITH ALLEN KEY, SLIGHTLY BACK OUT
SET SCREWS ON ADJUSTABLE
CONNECTOR.



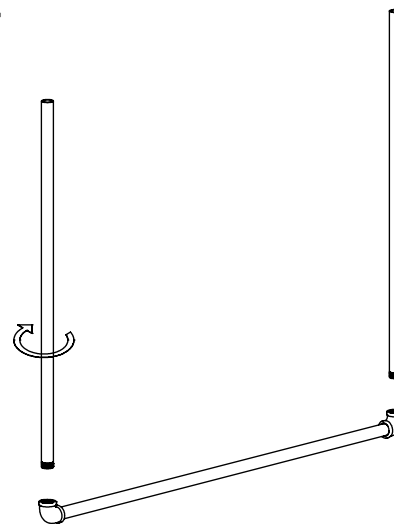
BY HAND, SCREW
ADJUSTABLE CONNECTOR
TO BOTTOM UPRIGHTS.

ADJUST SO THAT HAND
WHEELS ALIGN TO THE
OUTSIDE (AS SHOWN ON
THE LEFT.)

TIGHTEN SET SCREW USING
THE ALLEN KEY TO LOCK
ADJUSTABLE CONNECTOR IN
PLACE.

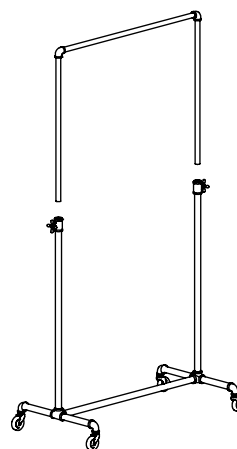


4



BY HAND, SCREW TOP
UPRIGHTS TO HANGBAR.

5



LOOSEN



TIGHTEN

- LOOSEN HAND WHEEL ON BOTH SIDES
- DROP HANGBAR INTO DESIRED HEIGHT
- LOCK IN POSITION BY TIGHTENING THE
HAND WHEEL ON BOTH SIDES