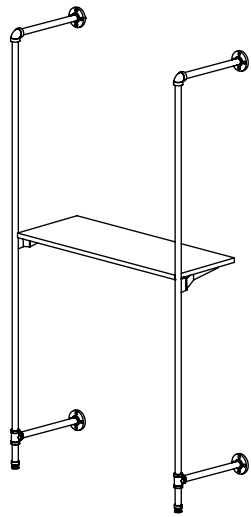
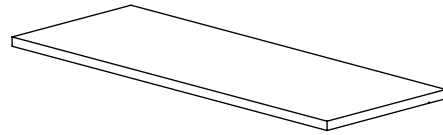


**ASSEMBLY INSTRUCTIONS:
PSORSLF48/24-ML**

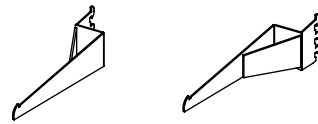


SHOWN INSTALLED
ON ITEM# PSOR FOR
REFERENCE

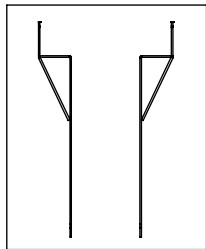
ITEM# PSORSLF48/24-ML



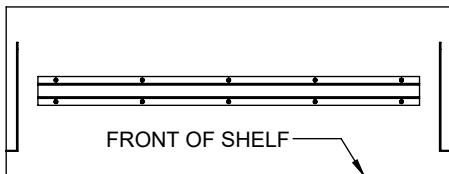
ITEM# PSORKB
(SOLD SEPARATELY)



1



SHELF BRACKETS
VIEWED FROM BELOW

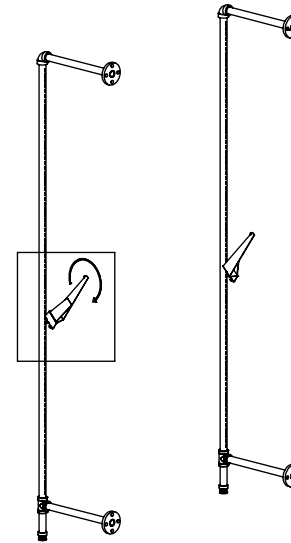


SHELF VIEWED FROM BELOW
**(NOTE: THE PSORSLF24-ML DOES
NOT HAVE A STEEL SUPPORT)**

IDENTIFY THE LEFT AND
RIGHT BRACKETS. THE
BEND OF THE SHELF
BRACKETS SHOULD BE
BETWEEN TWO OUTRIGGER
UPRIGHTS.

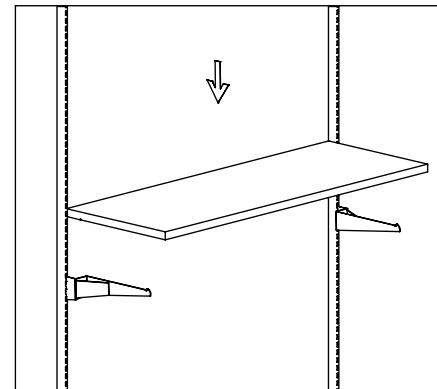
IDENTIFY THE FRONT OF
THE SHELF.

2



TILT THE SHELF BRACKET UP AND
INSERT THE TOP TOOTH INTO THE
DESIRED SLOT AS SHOWN. ROTATE
THE BRACKET DOWN WHILE
PUSHING TOWARDS THE UPRIGHT
SO ALL OF THE BRACKET TEETH
ENGAGE THE SLOTTED
STANDARDS. REPEAT FOR THE
OTHER BRACKET AT THE SAME
HEIGHT.

3



DROP THE SHELF ONTO THE
INSTALLED BRACKETS SO THE
BRACKETS ENGAGE THE
ROUTE ON THE BOTTOM OF
THE SHELF WOOD.