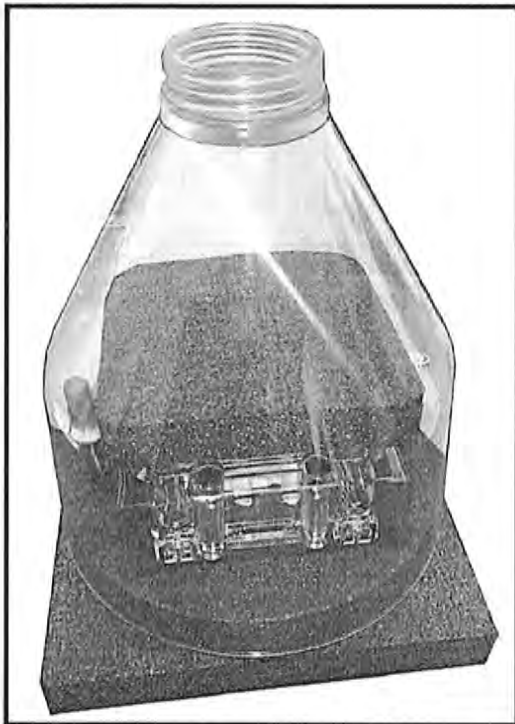
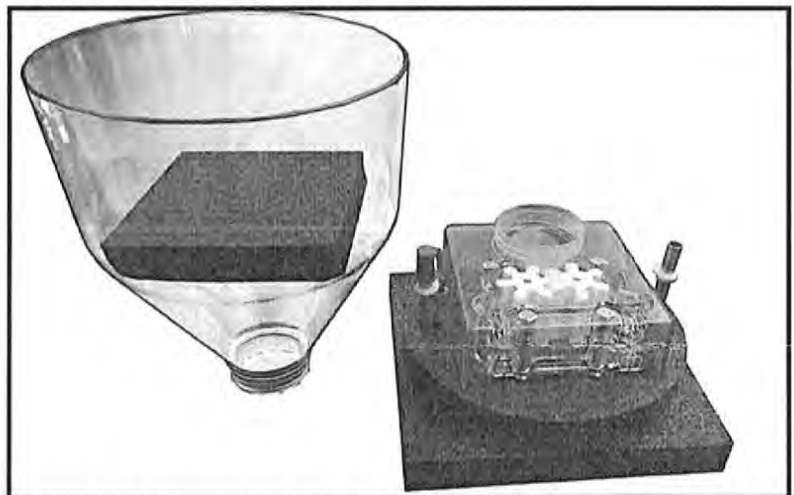


Beginning in early 2016, all Filler Units will be shipped unassembled. This is made possible due to the fact that the Hopper now threads into the Housing Assembly. This is a huge design change that will afford the owner the ability to replace either of the major plastic parts that were previously permanently joined. The ability to disassemble the Filler Unit will allow for thorough cleaning. It will also allow customers the option of changing from 6 Qt (5,5L) to 18 Qt (17L) capacity. Our new design should ultimately extend the longevity of the pump in that there is no longer a weak point that can snap when dropped. You can rest assured that we have done extensive testing (even with fully loaded hoppers) with very favorable results. We are sure that you will be pleased with our efforts in offering an even better piece of Edhard equipment.

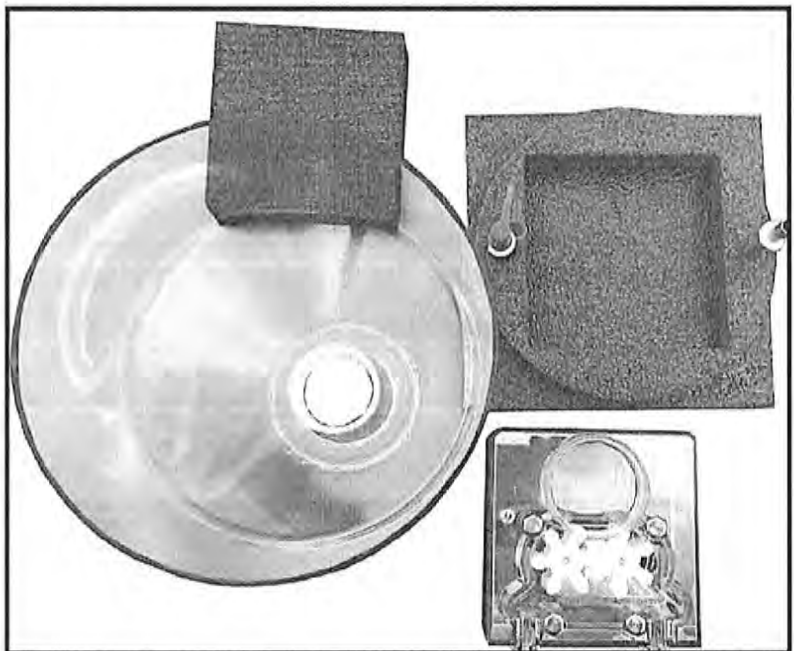
INSTRUCTIONS FOR ASSEMBLY

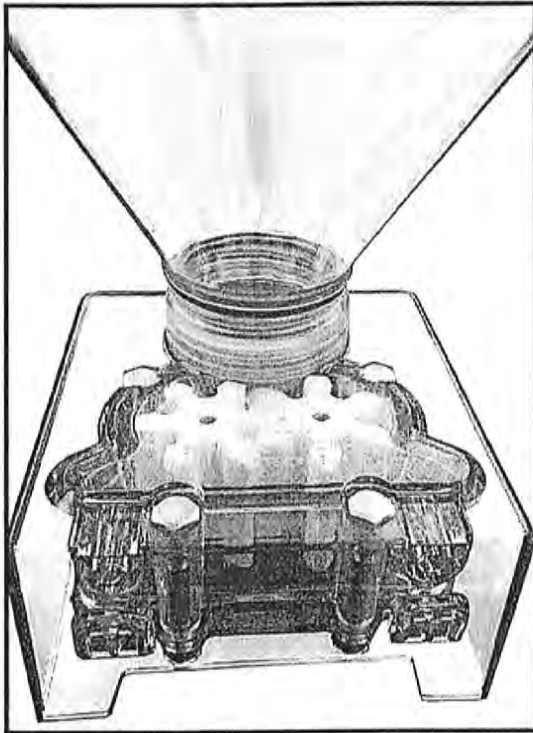


Remove the Hopper and Housing Assembly from the box.



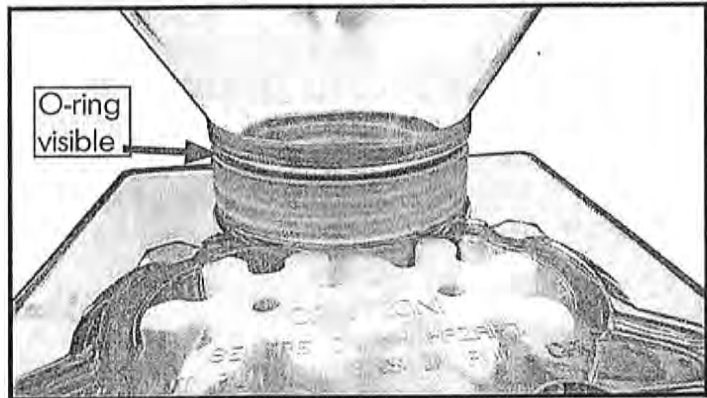
Hold the Foam Pad and pry the Hopper away. Then remove the Pump Housing Assy. from the foam.



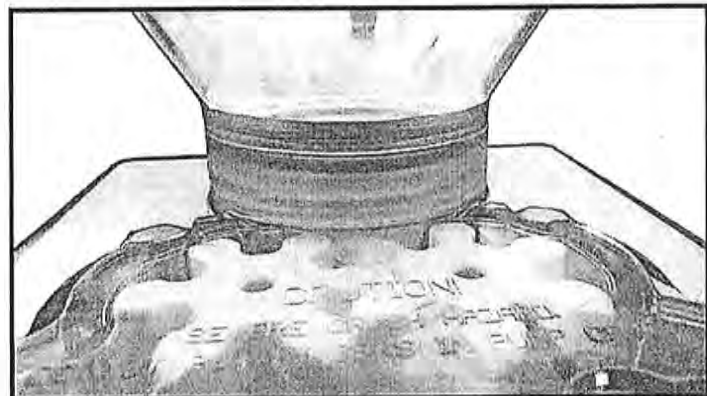


Place the Hopper onto the Pump Housing and begin to thread the two pieces together.

Hint: It may be simpler to place the Hopper large opening down and thread the Pump Housing onto the Hopper.



Make sure that the Hopper seats onto the Housing completely. Check to see that no part of the orange O-ring seal is visible.



Properly seated Hopper

Insert the Spout(s) and you are ready to use your new Filler Unit.

Please call or write us if you need assistance, would like to order parts or have a comment you would like to share with us!

Edhard Corp. 279 Blau Road, Hackettstown, NJ 07840 USA

888.edhard.1 (888.334.2731) or 908.850.8444

Fax: 908.850.8445

meter@edhard.com

www.edhard.com