

## OPERATING INSTRUCTIONS



1. With handle in upright position, place can on base under cutting knife. Hold handle and punch down to puncture top of can.



2. Lower handle and turn clockwise to rotate can until lid is cut out. Lid will drop into can and should be removed with tongs or gloves to protect hand from sharp edges of lid.



3. Raise handle to upright position and lift to remove open can.

## CLEANING INSTRUCTIONS TAKE APART

1. Place can opener in base and lift handle to vertical position.
2. Remove the two screws (N) securing the knife support (M) and knife (26210/26868) to the knife holder (J) and turn over knife to use the unused cutting edge or replace the knife.
3. To clean base, unscrew nuts and remove screws.
4. After cleaning, inspect for wear and replace worn parts before assembly.

## CLEANING PROCEDURE

The can opener must be cleaned daily or after each extended use as follows:

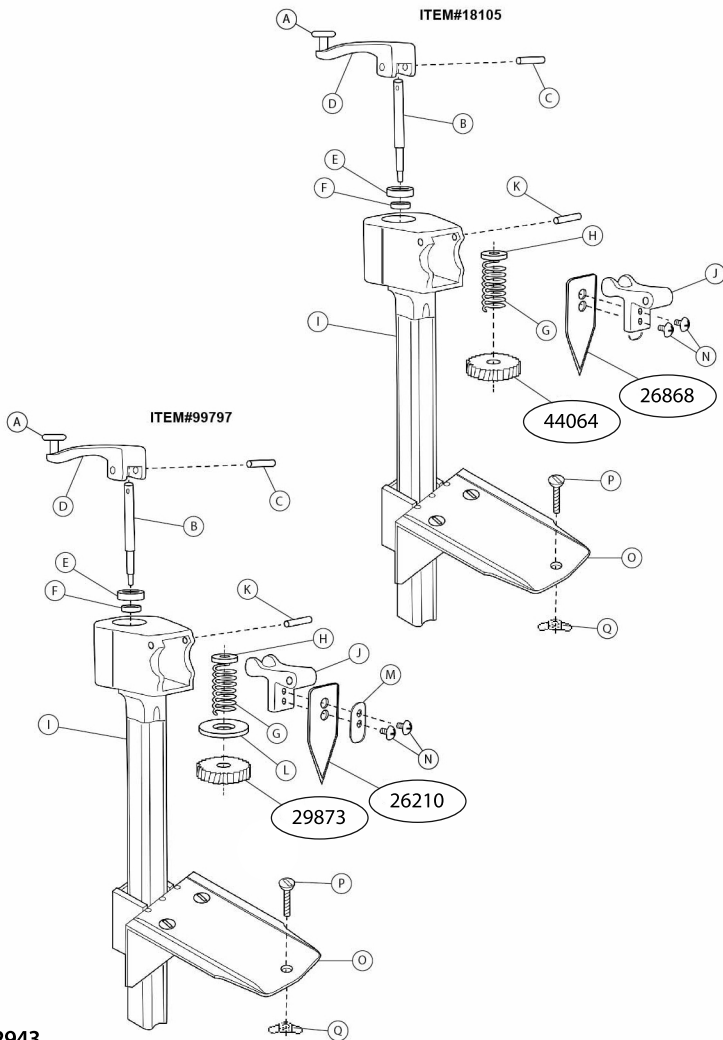
1. Remove all the food and can opening residues from the drive gear, the drive gear cavity, the knife and the area around the can stop using the stainless steel cleaning brush (sold separately). Regular use of this tool will help prevent unwanted product buildup and harmful bacteria growth.
2. Wash the knife, gear and any splash area on the opener using warm soapy water. Do not allow to soak.
3. Thoroughly dry the knife, gear and can opener using a dry cloth or paper towel.
4. Coat the knife and gear with light non-sticking vegetable oil to prevent rusting when the can opener is not in use.

## ASSEMBLY

1. Remount base and insert opener.
2. Reattach knife, spacer, and (2) screws per take apart procedure.

## IMPORTANT

A worn knife can cause metal slivers. Never sharpen. Blade is reversible and should be replaced every 2500 cans.



#11 Can Opener	#7 Can Opener	Part #	Part #	Name	Qty	Material
		29873	44064	Gear	1	T10A Carbon Steel
		26210	26868	Knife Blade	1	65Mn Carbon Steel
		A	A	Handle	1	
		B	B	Rocker Shaft	1	
		C	C	Rocker Bolt	1	
		D	D	Rocker Handle	1	
		E	E	Gasket	1	
		F	F	Gasket	0-1	
		G	G	Spring	1	
		H	H	Spring Gasket	1	
		I	I	Bar	1	
		J	J	Knife Stand	1	
		K	K	Shaft	1	
		L	L	Gear Gasket	1	
		M	M	Knife Gasket	1	
		N	N	Knife Screw	2	
		O	O	Base	1	
		P	P	Base Screw	3	
		Q	Q	Nut	3	