

INSTRUCTION MANUAL



#72907



#92900



Intertek
5011097

CONFORMS TO
NSF/ANSI STD. 20



Intertek
5011097

CONFORMS TO
UL STD. No.471
CERTIFIED TO
CSA STD. C22.2
No.120



Intertek
EP5021730

ENERGY
PERFORMANCE
VERIFIED
RENDEMENT
ENERGETIQUE
VERIFIE

Made
in
China

COMMERCIAL REFRIGERATOR SAFETY:

Your safety, and the safety of others, is very important. We have provided many important safety messages in this manual, and on your equipment. Always read and obey all safety messages.



This is the Safety Alert Symbol. This symbol alerts you to potential hazards that can kill or injure you and others. All safety messages will follow the Safety Alert Symbol, along with the words "DANGER," "WARNING," or "CAUTION."



DANGER



"DANGER" means that failure to heed this safety statement may result in severe personal injury or death.



WARNING



"WARNING" means that failure to heed this safety statement may result in extensive product damage, serious personal injury, or death.



CAUTION



"CAUTION" means that failure to heed this safety statement may result in minor or moderate personal injury, or property or equipment damage.

All safety messages will alert you to what the potential hazard is, tell you how to reduce the chance of injury, and let you know what can happen if the instructions are not followed.

If the supply cord is damaged, it must be replaced by the manufacturer, its service agent, or similarly qualified persons in order to avoid a hazard.

This appliance is not intended for use by individuals (including children) with reduced physical, sensory or mental capabilities, or lack of experience and knowledge, unless they have been given supervision or instruction concerning use of the appliance by someone responsible for their safety.

Children should be supervised to ensure that they do not play with the appliance.

This appliance can be used by children aged 8 years and above, and by individuals with reduced physical, sensory or mental capabilities, or lack of experience and knowledge, IF they have been given supervision or instruction concerning use of the appliance in a safe way, and understand the hazards involved. Children shall not play with the appliance. Cleaning and user maintenance shall not be done by children without supervision. Keep the appliance and its cord out of reach of children less than 8 years.

Do not store explosive substances such as aerosol cans with a flammable propellant in this equipment.

The appliance uses flammable insulation blowing gas C5H10. Disposal of the appliance shall be in accordance with the regulations of local authorities. The key for the appliance's electrical box should be kept safe by qualified individuals in order to avoid a hazard.

INSTRUCTION MANUAL



WARNING: RISK OF FIRE OR EXPLOSION. FLAMMABLE REFRIGERANT USED. DO NOT USE MECHANICAL DEVICES TO DEFROST REFRIGERATOR. DO NOT PUNCTURE REFRIGERANT TUBING.

a) DANGER – RISK OF FIRE OR EXPLOSION. FLAMMABLE REFRIGERANT USED. DO NOT USE MECHANICAL DEVICES TO DEFROST REFRIGERATOR. DO NOT PUNCTURE REFRIGERANT TUBING.

DANGER – RISQUE DE FEU OU D'EXPLOSION. LE FRIGORIGÈNE EST INFLAMMABLE. NE PAS UTILISER D'APPAREILS MÉCANIQUES POUR DÉGIVRER LE RÉFRIGÉRATEUR. NE PAS PERFORER LA TUBULURE CONTENANT LE FRIGORIGÈNE.

b) DANGER – RISK OF FIRE OR EXPLOSION. FLAMMABLE REFRIGERANT USED. TO BE REPAIRED ONLY BY TRAINED SERVICE PERSONNEL. DO NOT PUNCTURE REFRIGERANT TUBING.

DANGER – RISQUE DE FEU OU D'EXPLOSION. LE FRIGORIGÈNE EST INFLAMMABLE. CONFIER LES RÉPARATIONS À UN TECHNICIEN SPÉCIALISÉ. NE PAS PERFORER LA TUBULURE CONTENANT LE FRIGORIGÈNE.

c) CAUTION – RISK OF FIRE OR EXPLOSION. FLAMMABLE REFRIGERANT USED. CONSULT REPAIR MANUAL/OWNER'S GUIDE BEFORE ATTEMPTING TO SERVICE THIS PRODUCT. ALL SAFETY PRECAUTIONS MUST BE FOLLOWED.

ATTENTION – RISQUE DE FEU OU D'EXPLOSION. LE FRIGORIGÈNE EST INFLAMMABLE. CONSULTER LE MANUEL DU PROPRIÉTAIRE/GUIDE DE RÉPARATION AVANT DE TENTER UNE RÉPARATION. TOUTES LES MESURES DE SÉCURITÉ DOIVENT ÊTRE RESPECTÉES.

d) CAUTION – RISK OF FIRE OR EXPLOSION. DISPOSE OF PROPERLY IN ACCORDANCE WITH FEDERAL OR LOCAL REGULATIONS. FLAMMABLE REFRIGERANT USED.

ATTENTION – RISQUE DE FEU OU D'EXPLOSION. ÉLIMINER CONFORMÉMENT AUX RÈGLEMENTS FÉDÉRAUX OU LOCAUX. LE FRIGORIGÈNE EST INFLAMMABLE.

e) CAUTION – RISK OF FIRE OR EXPLOSION DUE TO PUNCTURE OF REFRIGERANT TUBING; FOLLOW HANDLING INSTRUCTIONS CAREFULLY. FLAMMABLE REFRIGERANT USED.

ATTENTION – RISQUE DE FEU OU D'EXPLOSION SI LA TUBULURE CONTENANT LE FRIGORIGÈNE EST PERFORÉE ; SUIVRE LES INSTRUCTIONS DE MANUTENTION AVEC SOIN. LE FRIGORIGÈNE EST INFLAMMABLE.

SPECIAL ATTENTION WARNING

1. Component parts shall be replaced with like components and that servicing shall be done by factory authorized service personnel, so as to minimize the risk of possible ignition due to incorrect parts or improper service.
2. Do not use mechanical devices or other means to accelerate the defrosting process, other than those recommended by the manufacturer.
3. Do not use electrical appliances inside the food storage compartments of the equipment, unless they are of the type recommended by the manufacturer
4. Keep ventilation openings, in the equipment enclosure or in the built-in structure, clear of obstruction.

INSTRUCTION MANUAL

CONTENTS:

TECHNICAL MANUAL	3
PRECAUTIONS BEFORE USING THIS PRODUCT	4
INSTALLATION	4
OPERATION	6
MAINTENANCE	7
WARRANTY	7
WIRING DIAGRAM	8
PARTS DETAIL	9

TECHNICAL MANUAL

Our goal is to provide our customers with the most reliable equipment in the industry today. Please read this manual, and the accompanying warranty information, before operating your new unit.

Upon delivery of your new unit, inspect the carton and unit for shipping damages. Report any damage immediately to the transportation carrier and file a written freight damage claim to protect your investment. If a claim is to be filed, save all packaging materials.

PRECAUTIONS BEFORE USING THIS PRODUCT

- This equipment is not intended for use by individuals(including children) with reduced physical, sensory or mental capabilities, or lack of experience and knowledge, unless they have been given supervision or instruction concerning use of the equipment by a person responsible for their safety.
- Use caution when cleaning the condenser - the fins are very sharp.
- For units with a dual hertz rating, no adjustments are required for normal operation.
- If the supply cord is damaged, it must be replaced by the manufacturer, its service agent, or a similarly qualified individual, in order to avoid a hazard.
- This refrigeration unit is not intended to be used at altitudes higher than 2000 meters.
- Do not store explosive substances such as aerosol cans with a flammable propellant in this equipment.

INSTRUCTION MANUAL

PRECAUTIONS BEFORE USING THIS PRODUCT (cont.)

- Use caution when moving, installing, maintaining and using this refrigeration device to avoid either damaging the refrigerant tubing or increasing the risk of a leak.
- All component parts must be replaced with like components, and all servicing must be done by factory-authorized service personnel, so as to minimize the risk of possible ignition due to incorrect parts or improper service.



WARNING: *This product can expose you to chemicals including lead, which are known to the State of California to cause cancer, birth defects, or other reproductive harm.*

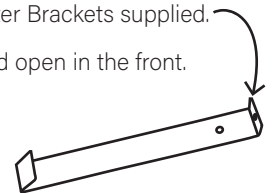
INSTALLATION:

The stainless steel exterior of the cabinet has been protected by a plastic covering during manufacturing and shipping. This covering can be readily peeled before installation. After removing this covering, wash the interior and exterior surfaces using a warm, mild soapy water solution and a sponge or cloth. Rinse with clean water and wipe dry.

LOCATION:

When locating your new milk dispenser, convenience and accessibility are important considerations, but the following factors must be observed.

- When placing the unit on a counter, the counter must be able to support a minimum of 300lbs.
- When placed on a counter, the unit must be on the legs supplied, and secured to the counter with the Counter Brackets supplied.
- There must be at least four(4) inches of clear space above the unit, two(2) inches on each side and back, and open in the front.
- At no time should anything be stored or placed on top of the unit.
- Correct serving height is important so that those using the dispenser can operate the dispenser properly.
- The unit must be level. The feet on the front legs are adjustable to aid in leveling the unit.
- Avoid placing the unit next to an oven, heating element, or hot air source which would adversely affect the performance of the unit.

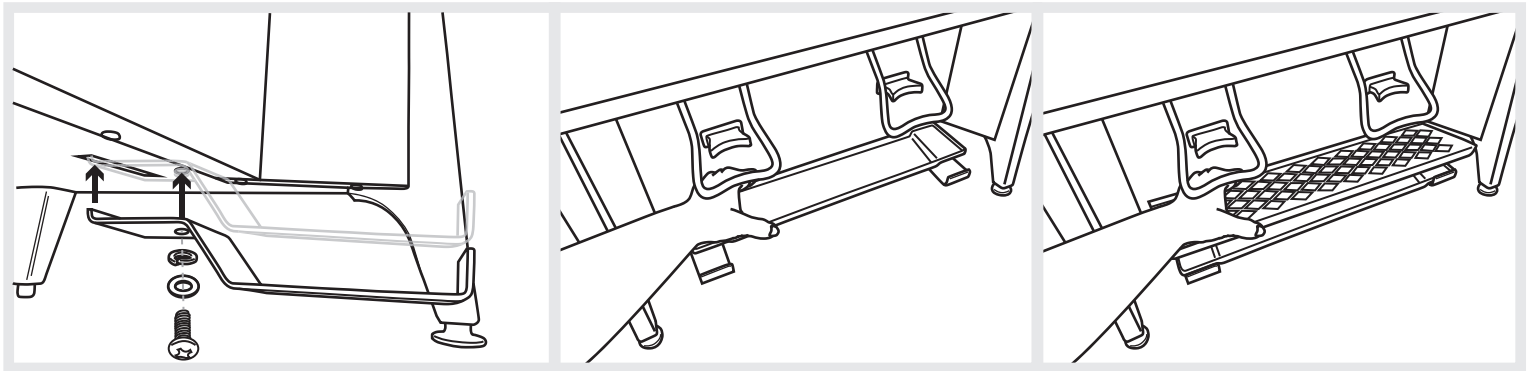


IMPORTANT: Mount and operate this unit on a stationary fixture only.

INSTRUCTION MANUAL

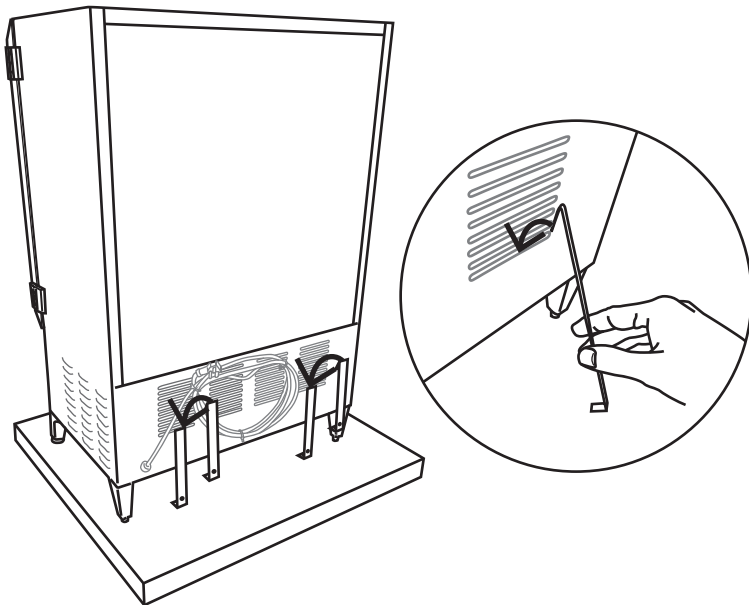
DRIP TRAY INSTALLATION:

To install drip tray, first install both Drip Tray Brackets to bottom of unit as shown, using lock washers, washers, and bolts provided. Be sure the tabs on the end of the brackets are inserted into the slots in the bottom of the unit before tightening bolts. Next, place Plastic Drip Tray across brackets, and Metal Drip Tray Cover on top, as shown.



COUNTER BRACKET INSTALLATION:

To install Counter Brackets, first insert acute end of bracket into bottommost slot of the unit's back vents. Then, attach to counter using hardware appropriate for counter substrate.



INSTRUCTION MANUAL

ELECTRICAL CONNECTIONS:

Be sure to check the data plate, located on the liner of the cabinet, for required voltage prior to connecting the unit to power. The specifications on the data plate supersede any future discussion.

The standard dispenser is equipped with a seven(7) foot power cord that requires a 115 Volt, 60 Cycle, 1 Phase properly grounded electrical receptacle. The power cord comes with a 3 prong plug for grounding purposes. Any attempt to cut off the grounding spike, or to connect to an ungrounded adapter plug, will void the warranty, terminate the manufacturer's responsibility, and could result in serious injury.

The circuit must be protected with a 15 or 20 ampere fuse or breaker.

ENERGY RATING: Your Hubert refrigerator was tested at an ambient temperature of 30°C at 40% relative humidity.

OPERATION:

INITIAL STARTUP:

After satisfying the installation requirements, the milk dispenser is ready to start. The unit will start when the power cord is connected to a live electrical receptacle. If the compressor is not running when the unit is initially plugged in, check to make sure the Temperature Control is not set to the "off" position. Allow the unit to run a minimum of two hours before loading it with product.

PREPARATION FOR USE:

Once the unit has achieved proper operating temperature, observe the procedures noted in the label on the door liner for loading milk into the milk dispenser. When removing an empty bag of milk, be sure to push the valve arm fully before pulling the milk tube out of the valve. The last half inch of upward valve travel will lock the valve jaw in place, and prevent it from coming out of the valve.

TEMPERATURE CONTROL:

The Temperature Control, located on the front of the unit behind the valve splash guard(see label on door liner), is factory set at the midpoint position, which will maintain an average product temperature around 36-38 degrees F. To access the temperature control, follow instructions on door liner. To obtain cooler temperatures, turn the Temperature Control stem clockwise, and vice versa, with a flat head screwdriver. Allow the unit a minimum of six(6)hours to respond to a control setting adjustment, if the product is in the cabinet.

THERMOMETER:

The thermometer, mounted on the inside of the door, is factory set to indicate the temperature of the product within two(2)degrees. Should the thermometer read inaccurately, there are instructions for recalibrating it, located on the door liner.

DEFROST:

The milk dispenser is a manual defrost unit. The unit should be defrosted whenever the walls accumulate a frost bank that is 1/2 inch thick. To defrost the unit, either turn the Temperature Control to the off position, or disconnect the power cord from the electrical receptacle, and open the door. After the frost has melted or come loose from the cabinet walls, wipe out the cabinet interior. Do not attempt to scrape or chisel off the frost, as you could do irreparable damage to the unit.

INSTRUCTION MANUAL

MAINTENANCE: *Preventive maintenance is minimal, although these few steps are very important to continued operation and maximizing the life of the equipment.*

CABINET SURFACES:

The cabinet interior and exterior are stainless steel, and should be cleaned periodically with a solution of warm water and a mild soap, then rinsed and wiped dry with a clean, soft cloth. A stainless steel cleaner can also be used. Should a surface become stained or discolored, do not attempt to clean with an abrasive cleaner or scouring pad. Use a soft cleaner and rub with the grain of the metal to avoid scratching the surface. Do not use chlorinated cleaners.

VALVES:

To clean the valve, start by removing the bottom valve body cap(item 32) by prying it down and off. Remove the valve jaw(item 29) by pushing up through the bottom of the valve, and pulling it out the top of the valve. Clean all loose parts and the valve(in place) with a solution of warm water and mild soap, or a sanitizing solution, then rinse. Replace the valve jaw by sliding it into the valve from above, and pressing down on the valve jaw, until it snaps firmly onto the valve push rod. Replace the bottom valve body cap.

LEAKING VALVES:

When you notice a leak, open the door and clamp the plastic clip onto the milk tube. Push the Valve Handle(Item 27), pull out the milk tube and release Valve Handle(Item 27). Check to make sure Valve Jaw(Item 29) is pushed and pressed tightly. If Valve Jaw(Item 29) operates properly and leakage still happens, the spring(Item 28) is probably not functioning, and needs to be replaced.

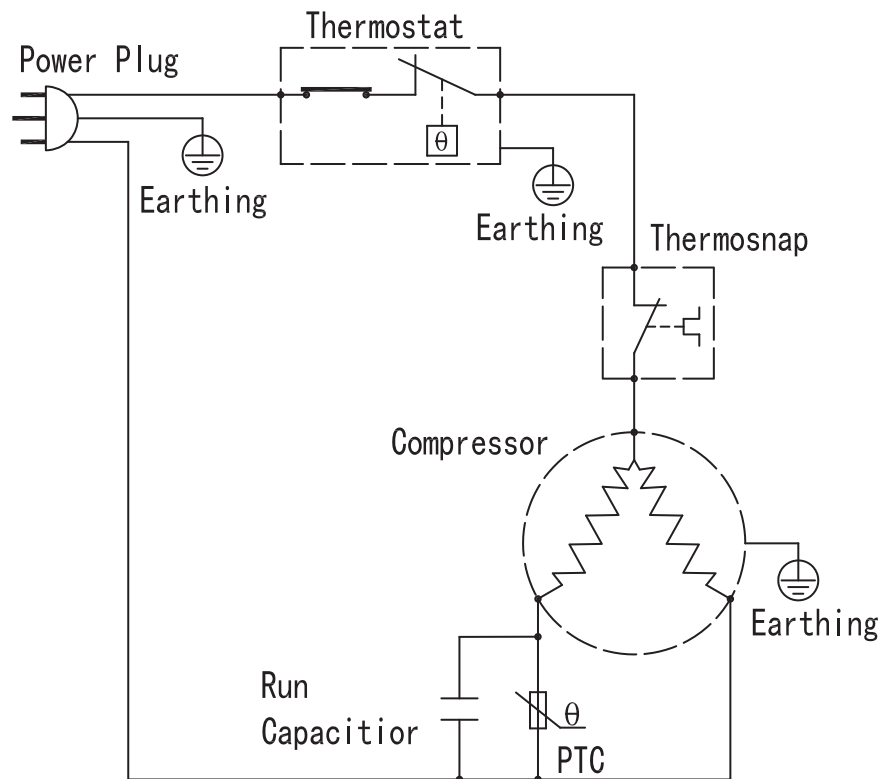
WARRANTY:

Hubert warrants this equipment from failures in material and workmanship for one(1) year parts and five(5) year compressor from date of purchase with proof of purchase, provided the equipment is operated and maintained in conformity with the provided Instruction Manual. Any failed part of the equipment will be repaired or replaced without charge at Hubert's discretion.

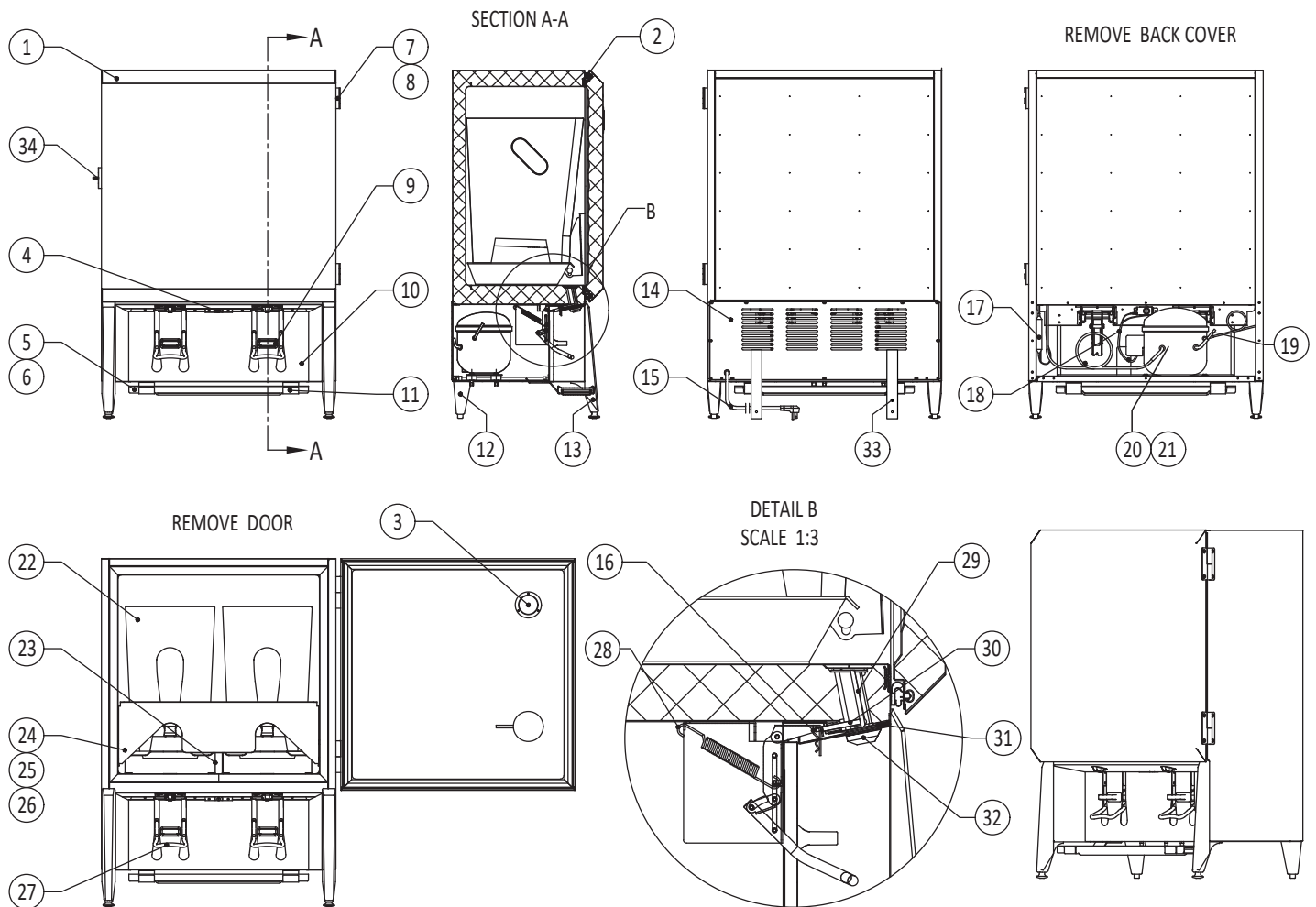
For Warranty Inquiries or Service - CALL 855-515-4434

INSTRUCTION MANUAL

WIRING DIAGRAM



INSTRUCTION MANUAL



INSTRUCTION MANUAL

ITEM NO.	PART DESCRIPTION (FROM NAVISION)	PART NO.
1	DOOR ASSEMBLY FOR DOUBLE VALVE	208002-302-001
1	DOOR ASSEMBLY FOR TRIPLE VALVE	208003-302-001
2	DOOR GASKET FOR DOUBLE VALVE	27830
2	DOOR GASKET FOR TRIPLE VALVE	29112
3	THERMOMETER	303004-001-001
4	THERMOSTAT	303004-001-002
5	DRIP TRAY FOR DOUBLE VALVE,ABS	30945
5	DRIP TRAY FOR TRIPLE VALVE,ABS	40982
6	DRIP TRAY COVER FOR DOUBLE VALVE,STAINLESS	47545
6	DRIP TRAY COVER FOR TRIPLE VALVE,STAINLESS	50945
7	HINGE KIT (MALE,FEMALE,GOVERS & SCREWS)	301034-001-003
8	HINGE COVER	301034-001-006
9	CUP STOP	301034-001-005
10	APRON FOR DOUBLE VALVE,STAINLESS	277002-302-001
10	APRON FOR TRIPLE VALVE,STAINLESS	277003-301-001
11	DRIP TRAY SUPPORT	277001-301-011
12	REAR LEG	52573
13	FRONT LEG	63675
14	BACK PANEL FOR DOUBLE VALVE,STAINLESS	273002-301-001
14	BACK PANEL FOR TRIPLE VALVE,STAINLESS	273003-301-001
15	POWER CORD 115V	67544
16	HAIR PIN CLIP	301610-001-010
17	DRIER	67832
18	HARNES	
19	PROCESS TUBE	
20	COMPRESSOR 115V/60HZ	
21	ACCESSORY KIT	
22	MILK SHUTTLE 3.5.6 GALLON	32012
23	PLATFORM.MILK CONTAINER	277001-301-007
24	LOADING SHELF FOR DOUBLE VALVE,STAINLESS	277002-301-002
24	LOADING SHELF FOR TRIPLE VALVE,STAINLESS	277003-301-002
25	PIVOT SCREW.LOADING SHELF	309008-001-005
26	STOP SCREW.LOADING SHELF	309008-001-004
27	VALVE HANDLE	301610-001-014
28	SPRING	309008-001-006
29	VALVE JAW	302606-001-004
30	PUSH ROD	301610-001-006
31	SPLASH GUARD FOR DOUBLE VALVE,STAINLESS	277002-301-004
31	SPLASH GUARD FOR TRIPLE VALVE,STAINLESS	277003-301-004
32	CAP,VALVE BODY	92575
33	COUNTER BRACKETS	12359
34	LATCH LOCK	301034-001-007

WHEN ORDERING REPLACEMENT PARTS, PLEASE PROVIDE MODEL AND SERIAL NUMBERS