



Model: _____ Item #: _____ Date: _____
 Project: _____ Qty: _____ Approved By: _____

12" Wide Space Saver Hand Sinks

HAND SINKS

Product Images

| | | |
|--|---|---|
| <p>HS-9L 12" Wide Hand Sink</p>  | <p>HS-9-LS/RS Side Splash on one side</p>  <p>HS-9-RS shown</p> | <p>HS-9-LF Faucet Not Included</p>  |
| <p>HS-21 w/ Heavy Duty Faucet</p>  | <p>HS-30L Side Splashes</p>  | <p>HS-35 Eyewash Station</p>  |
| <p>HS-31 Soap & Towel Dispenser</p>  | <p>HS-32 Soap & Towel Dispenser w/ Side Splashes</p>  | <p>HS-37 Soap & Towel Dispenser w/ Stainless Steel Skirt</p>  |

Standard Features

| | |
|----------------------------|--|
| Fabrication | 20 gauge stainless steel |
| Bowl | 9-3/4"W x 12-1/2"L x 6" Deep drawn bowl with stamped rim to prevent spillage |
| Wall Mount Bracket | Offset design for added strength |
| Faucet | 4" center wall mount faucet included on most models |
| Drain | Stainless steel |
| Drain with Overflow | Stainless Steel with plastic overflow tube and inlet |
| Plumbing | 1/2" IPS hot and cold water. 1-1/2" IPS drain outlet. Install at 36" working height. 1/2" faucet supply 12" from floor. 1-1/2" drain line 23-1/4" from floor. |
| Lead Free | Products are certified to NSF/ANSI 61 and 372 and conforms with the lead content requirements for lead free plumbing as defined by the U.S. Safe Drinking Water Act. |

Optional Accessories

| | |
|----------------|---------------------------------|
| 21-311L | Wrist Blade Handle Kit |
| H-100 | Chrome Plated 1-1/2" IPS P-Trap |
| H-104 | Wall Mount Soap Dispenser |
| H-105 | Wall Mount Towel Dispenser |
| H-106L | Left Side Splash |
| H-106R | Right Side Splash |
| H-107 | Left and Right Side Splashes |
| H-108 | Stainless Steel Skirt |
| H-109 | Upgrade: Royal Series Faucet |
| H-110 | Side Support Brackets |
| H-111 | Soap & Towel Dispenser |



Certified to NSF/ANSI 61-G



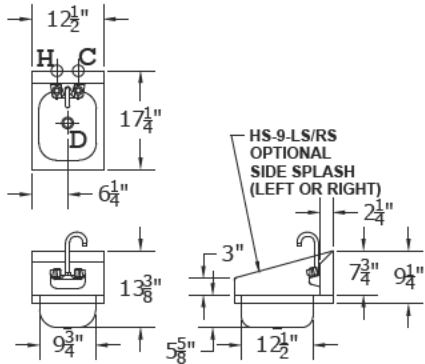
Model: _____ Item #: _____ Date: _____

Project: _____ Qty: _____ Approved By: _____

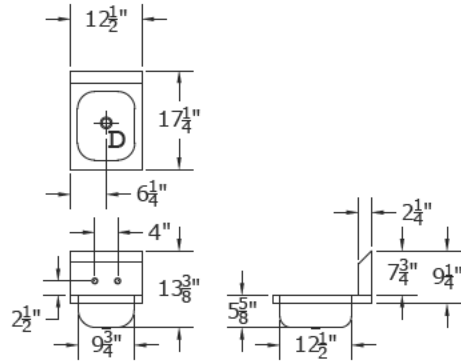
12" Wide Space Saver Hand Sinks

HAND SINKS

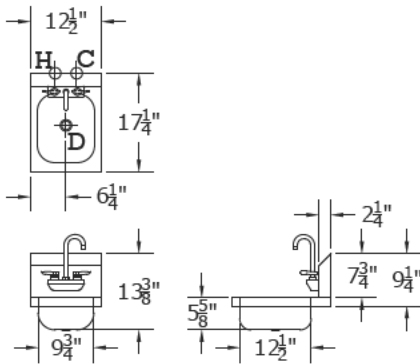
HS-9L or HS-9-LS/RS



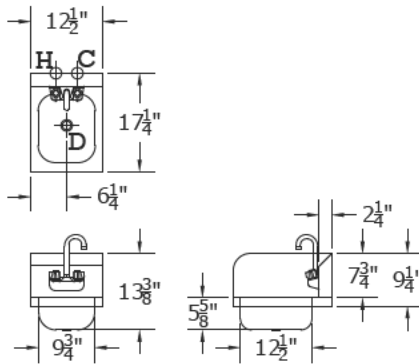
HS-9-LF



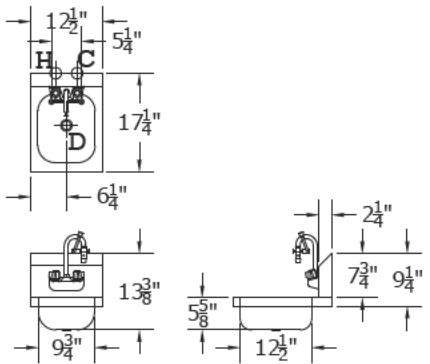
HS-21



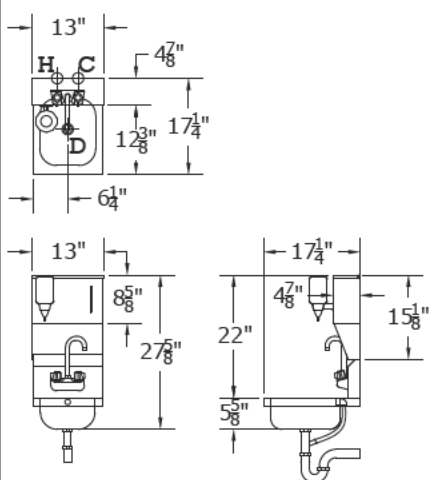
HS-30L



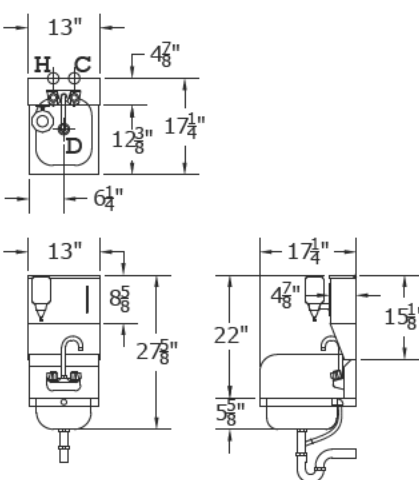
HS-35



HS-31



HS-32



HS-37

