



We put space to work.

Item # _____

Job _____

Metro® Mightylite™ Insulated Top-Load Food Carriers

Attractive, ultra light, and durable insulated top-load food carriers for transporting and delivering hot and cold food pans, containers, plated meals, or virtually anything else.

- **Durable:** advanced polymer foam construction with high strength-to-weight ratio withstands impact without damage, making it perfect for lifting and withstanding the rigors of off-site food transport!
- **Ultra-light:** 80% lighter than traditional polymer molded, urethane foam filled carriers and 60% lighter than coolers. ML180 only weighs 3.8 lbs. (1.7kg) and ML180XL 4.6 lbs. (2.1kg)
- **Ergonomic:** ultra light with 4 convenient handles, facilitates lifting, carrying, and moving in any situation. Grab the optional carrying strap for one-handed or two-person carrying.
- **Keeps food safe for 5+ hours!** Transport hot or cold food at safe, appetizing temperatures with confidence.
- **Snap seal lid:** Flexible, integrated seal snaps shut to help retain temperature. Never worry about replacing or cleaning hinges, latches, or gaskets again!
- **Label holder:** two convenient pockets accept a 5.5" x 4.25" (140 x 108mm) folded piece of paper to make identifying carrier contents and destination easier.
- **Stackable:** carriers are designed to interlock with each other, Mightylite front-load carriers, and optional dolly for more efficient transportation and storage.
- **Generous hand recesses:** for easy loading and unloading of food pans. Also increases storage area to fit more containers.
- **Recyclable:** 100% recyclable, CFC free.
- **BigBoy lid:** ML180XL with innovative BigBoy multi-functional lid provides 63% more storage, clearance to store taller items, and doubles as a server.



Keeps Food
HotCold
5+ hrs.

2
YEAR
WARRANTY

(2) ML180 & (2) ML180XL
stacked on optional dolly



ML180



ML180XL

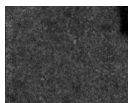
Available Lid Colors



RED
ML180
ML180XL



BLUE
ML180-BU
ML180XL-BU



BLACK
ML180-BL
ML180XL-BL

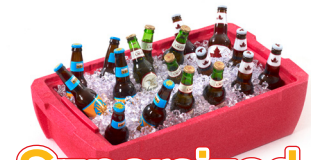
The multi-purpose carrier with **63% more** storage.



TOP-LOADER



COOLER



Supersized.
180XL
SERVER

All Metro Catalog Sheets are available on our website: www.metro.com



InterMetro Industries Corporation
North Washington Street, Wilkes-Barre, PA 18705
Product Information. U.S. and Canada: 1.800.992.1776
Outside U.S. and Canada: www.metro.com/contactus

L02-208
Printed in U.S.A. 1/19

Information and specifications are subject to change without notice. Please confirm at time of order.

Copyright © 2019 InterMetro Industries Corp.



Metro® Mightylite™ Insulated Top-Load Food Carriers

13-61



Metro® Mightylite™ Insulated Top-Load Food Carriers

We put space to work.®

Specifications

- **Carrier Construction:** Lightweight, thermally insulated, impact absorbing, eco-friendly engineered plastic foam body and lid made of expanded polypropylene (EPP). 1.5" (38mm) thick walls.

Accessories

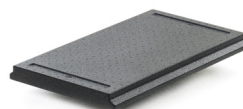
- **Dolly (MLD1):** Constructed of heavy-duty high density polyethylene (HDPE) construction reinforced with aluminum caster channels. Designed to transport carriers or milk crates. Can be stored on top of carrier, strap included.
- **Thermal Partition (MLP1):** Lightweight, insulated EPP construction, helps avoid accelerated food temperature loss or gain inside partially full carriers, or used to separate hot and cold food in the same carrier.
- **Heater (MLH1):** Stainless steel, thermostatically controlled add-on carrier heater. Great for applications where carriers are frequently accessed or not 100% full, or simply when added heat is desired to keep food hotter, safer, and more appetizing.
- **Serving Ring (MLW1):** Epoxy coated wire construction, for use in conjunction with top-load carriers and heater to transport & serve with a single solution that does not require water or canned fuel. Accommodates full & fractional sized pans, and non-pan items such as individually portioned meals.
- **Carrying Strap (MLS1):** Heavy-duty, adjustable strap that can be reconfigured for one or two person carrying. Designed to work with top-load and front-load carriers.



MLD1 Dolly (includes strap)



MLW1 Serving Ring



MLP1 Thermal Partition



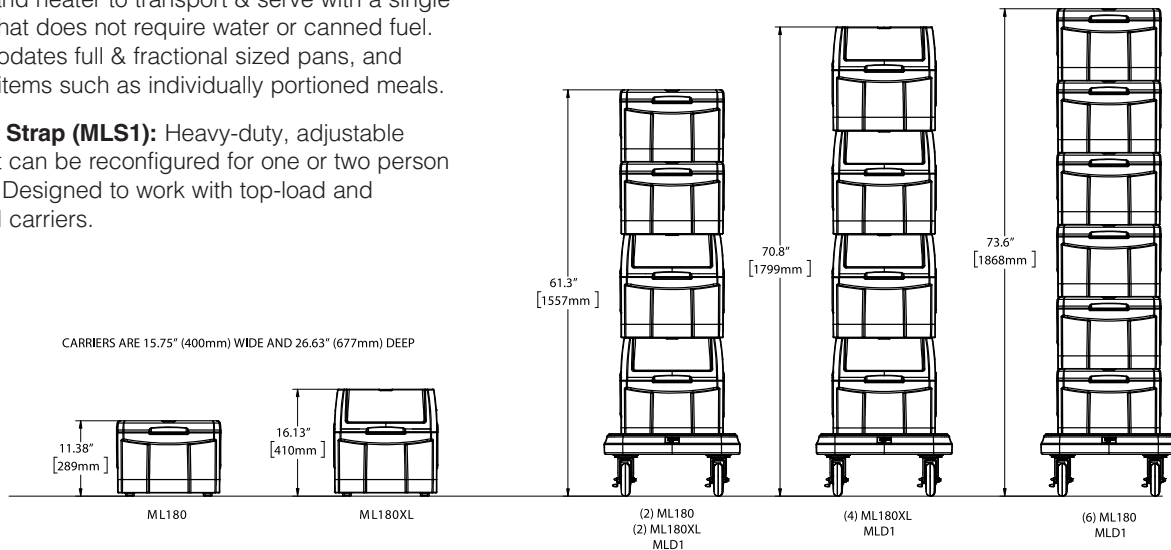
MLH1 (120V), MLHX1 (240V) Heater



MLS1 Carrying Strap

CARRIERS STACKED ON DOLLY ARE
20.63" (524mm) WIDE AND 29.75" (756mm) DEEP

CARRIERS ARE 15.75" (400mm) WIDE AND 26.63" (677mm) DEEP



	Inside Dimensions (W x D x H) (in) (mm)		12" x 20" - GN 1/1 Pan Capacity				Food Capacity (approx.)	Inside Capacity (approx.)	Covered Plates*	Container Sizes**							Shipping	
			2.5" 65mm	4" 100mm	6" 150mm	8" 200mm				Cans 12oz.	Cans 16oz.	Bottles 12oz.	Bottles 750ml	Bottles 2L	Half Gallon	Gallon	Pkd. Wt.	Volume
ML180	21.0 x 12.9 x 8.1	533 x 327 x 205	3	2	1	1	30 qts (28.4 L)	38 qts (36.0 L)	6	40	40	36	14	8	10	4	5.8 lbs. (2.6kg)	2.8ft³ (.26m³)
ML180XL	21.0 x 12.9 x 13.2	533 x 327 x 335	5	3	2	1	45 qts (42.4 L)	62 qts (58.7 L)	8	80	56	43	24	14	15	6	7.4 lbs. (3.4kg)	4.0ft³ (.37m³)

*10.5" cover diameter and 2.75" covered plate height

**Container capacity may vary depending on individual container size.

Note: Part number for carrier with red lid is indicated above. For alternate lid color options, select part numbers from the color chart on page 1.

an Ali Group Company



The Spirit of Excellence