

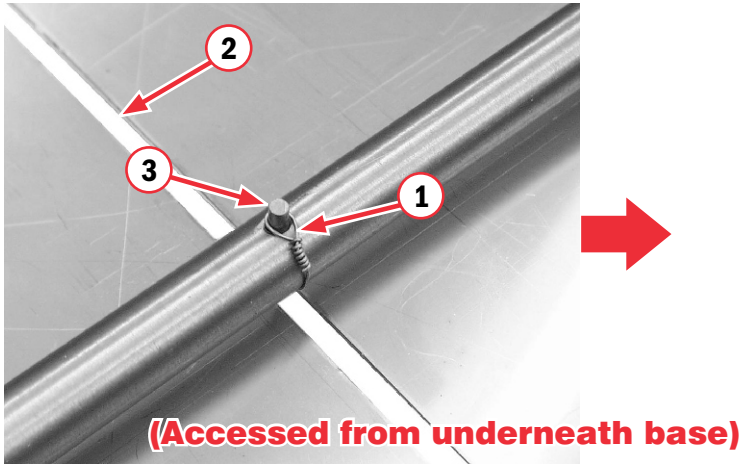
SERVICE INFORMATION

CHEESE CUTTER WIRE REPLACEMENT MODEL CC-12 AND CC-20 CUTTERS

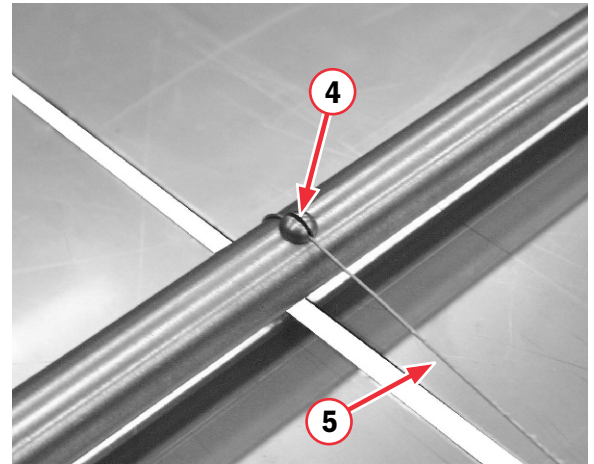
Replacement Wire Part Numbers:

CC-12: **6501-010** (5 per pkg.) CC-20: **6501-011** (5 per pkg.)

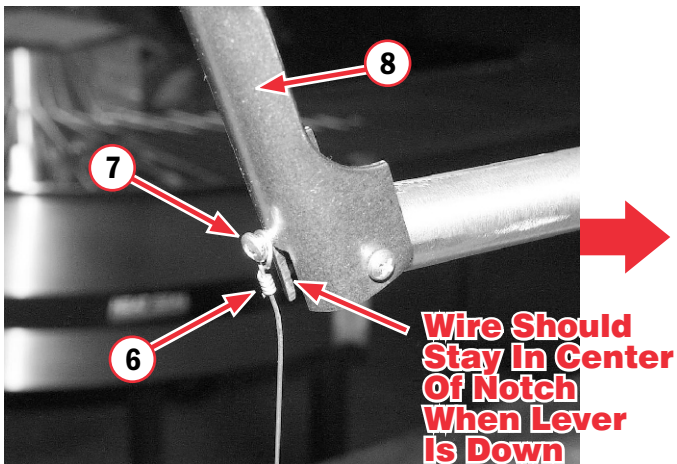
- Remove broken wire ends.



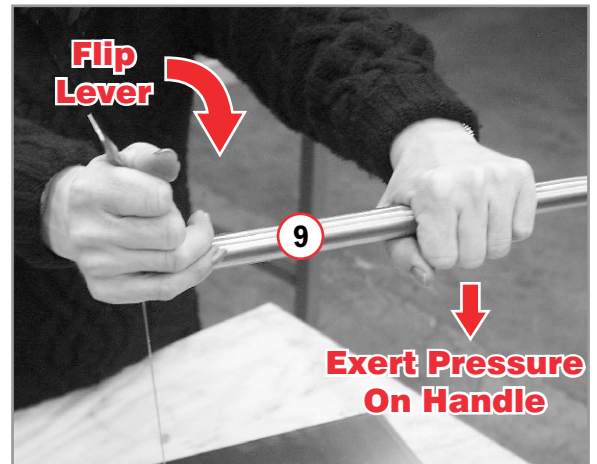
- Wire has one large loop and one small loop on the ends. Pass the wire end with the small loop (1) through the slot in the base (2), then over stud (3).



- Then turn arm to reveal slotted head (4) and thread wire (5) through the slot to guide wire



- Then place the large loop (6) over the anchor screw (7) on the flip lever (8) on the handle.



- While flipping the lever into place, pressure must be exerted on the cutter arm (9) to allow the wire to be tightened securely. Force lever over slowly to tension wire. Check that wire stays centered in the slot on the flip lever.

SERVICE INFORMATION

CHEESE CUTTER APPLICATIONS

↓ Cheese Cutter with Cheese Stop and Movable Arm



Cheese Cutter with Table Stop and Stationary Arm →



For further assistance, contact your distributor or call us



HEAT SEAL, LLC