

# Cup Dispensers

- Silicone molded gasket
- Easy attachable collar
- Durable construction
- 4 different sized gaskets to accommodate paper, plastic, and foam cups
- Accommodates lids up to 4<sup>7</sup>/<sub>8</sub>"



2V-CC-A-A



G58807



ITEM #	DESCRIPTION	DIMENSIONS: L X W X H: IN (CM)	ACCOMMODATES CUPS/LIDS WITH RIM DIAMETER: IN (CM)	CASE LOT
<b>CABINETS, CUP DISPENSERS</b>				
1-C-A	Single-cabinet INC-80 cup dispenser	25¼ x 8¾ x 7¾ (64.1 x 20.3 x 18.7)	2¼-4¾ (5.7-12.1)	1
2V-CC-A-A	2-high vertical cabinet, INC-80 cup dispenser	25¼ x 16¾ x 14¾ (64.1 x 40.5 x 36.5)	2¼-4¾ (5.7-12.1)	1
3V-CCC-A-A-A	3-high vertical cabinet, INC-80 cup dispensers	25¼ x 24 x 14¾ (64.1 x 61 x 36.5)	2¼-4¾ (5.7-12.1)	1
3V-CCS-A-A-A	3-high vertical cabinet, 2-INC-80 cup dispenser and straw pocket	25¼ x 31½ x 21¾ (64.1 x 79 x 54.2)	2¼-4¾ (5.7-12.1)	1
G58806	3 x 2 ABS plastic cabinet with 3 INC80 cup dispensers, 3 "T" holders, and one straw pocket	25¼ x 14¼ x 21¾ (64.1 x 36.1 x 54.2)	2¼-4¾ (5.7-12.1)	1
G58807	4 x 2 ABS plastic cabinet with 4 INC80 cup dispensers, 4 "T" holders, and one straw pocket	25¼ x 14¼ x 28¾ (64.1 x 36.1 x 72)	2¼-4¾ (5.7-12.1)	1

*Additional models and cabinets available at VOLLRATH.com*

# In-Counter Cup Dispensers

## PLASTIC DISPENSERS

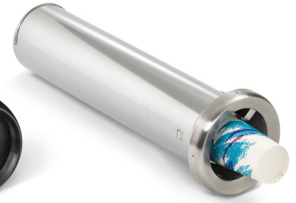
- Molded silicone gasket for easy cup release
- Easy attachable collar
- Durable construction
- 4 different-sized gaskets come with each unit to accommodate paper, plastic, or foam cups
- Mounts horizontally or vertically

## NEW STAINLESS STEEL DISPENSERS

- Easy dial adjustment
- Each stainless steel unit comes with 2 springs: 1 standard spring for paper and plastic cups and 1 lighter spring for foam cups
- Stainless steel grips ensure one-at-a-time dispensing
- Mounts horizontally or vertically
- See our Serving Systems and Components brochure for more in-counter LidSaver dispensers



INC-80



CADJ-3



ITEM #	DESCRIPTION	DIMENSIONS (L X W): IN (CM)	ACCOMMODATES CUPS WITH RIM DIAMETER: IN (CM)	CASE LOT
<b>GASKET STYLE DISPENSERS</b>				
INC-80	Gasket-style cup dispenser, 23" (58.4 cm) L	24 <sup>3</sup> / <sub>8</sub> x 6 <sup>1</sup> / <sub>2</sub> (62.2 x 16.5)	2¼-4¾ (5.7-12.1)	1
INC-80S18	Gasket-style cup dispenser, 18" (45.7 cm) L	19¼ x 6 <sup>1</sup> / <sub>2</sub> (49.5 x 16.5)	2¼-4¾ (5.7-12.1)	1
<b>STAINLESS STEEL DISPENSERS</b>				
CADJ-1	In-counter adjustable stainless steel cup dispenser, 22"	22 x 5.4 (55.9 x 13.7)	2½-3½ (6.4-8.9)	1
CADJ-2	In-counter adjustable stainless steel cup dispenser, 22"	22 x 5.4 (55.9 x 13.7)	3-3 <sup>7</sup> / <sub>8</sub> (7.6-9.8)	1
CADJ-3	In-counter adjustable stainless steel cup dispenser, 22"	22 x 5.4 (55.9 x 13.7)	3-4 <sup>5</sup> / <sub>8</sub> (7.6-11.7)	1
CADJ-4	In-counter adjustable stainless steel cup dispenser, 22"	22 x 5.4 (55.9 x 13.7)	4½-5¼ (11.4-13.3)	1

*Additional models and cabinets available at VOLLRATH.com.*

# Wall-Mount LidSavers and Cup Dispensers

- Wall-mount unit frees up valuable counter space
- Mounting hardware included



CIVW

1VW-A

ITEM #*	DESCRIPTION	DIMENSIONS (H X W X L): IN (CM)	CASE LOT
CIVW-(LID CODE)	Wall-mount, single-cabinet vertical LidSaver	7½ x 7¾ x 25¼ (18.1 x 18.7 x 64.1)	1
1VW-A	Wall-mount, single-cabinet gasket-style vertical cup dispenser INC-80	7½ x 7¾ x 25¼ (18.1 x 18.7 x 64.1)	1

*\*Not a complete item number – visit online configurator to determine complete item number. LidSavers are lid specific, and lid manufacturer and part number must be supplied when ordering LidSaver.*