



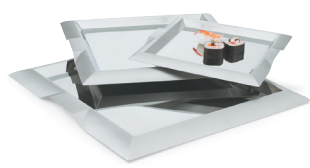
# SERVING TRAYS

## Stainless Steel Serving Trays

- Heavy-gauge stainless steel is highly resistant to corrosion, pitting, and rusting
- Satin-finished rim and mirror-finished interior create a visual contrast that accentuates the food product
- Integral handles for safer carrying and comfort
- Dishwasher safe



Rectangular Trays



Square Trays



Round Trays



Oval Trays

ITEM #	DESCRIPTION	DIMENSIONS (L X W OR DIA): IN (CM)	CASE LOT
82093	Small rectangular tray	12 x 9 (30.5 x 22.9)	3
82094	Medium rectangular tray	18 x 10 (45.7 x 25.4)	3
82095	Large rectangular tray	21 x 12 (53.3 x 30.5)	3
82090	Small square tray	11¾ x 11¾ (29.8 x 29.8)	3
82091	Medium square tray	15¾ x 15¾ (40 x 40)	3
82092	Large square tray	18½ x 18½ (47 x 47)	3
82096	Small round tray	12 (30.5) dia	3
82097	Medium round tray	14 (35.5) dia	3
82098	Large round tray	16 (40.6) dia	3
82060	Small oval tray	14¾ x 10⅞ (37.5 x 27.6)	3
82061	Medium oval tray	17⅞ x 13 (44.8 x 33.0)	3
82062	Large oval tray	21⅞ x 15½ (53.7 x 39.4)	3

## Esquire™ Fluted Trays

- Mirror-finished heavy-duty 18-10 stainless steel
- Center embossing enhances style and minimizes noticeable wear
- Food-safe contact area so trays will not pit or discolor
- Dishwasher safe



ITEM #	DESCRIPTION	DIMENSIONS (L X W OR DIA): IN (CM)	CASE LOT
82166	Rectangular fluted tray	18¾ x 12½ (46.4 x 31.8)	3
82167	Rectangular fluted tray	21 x 14¼ (53.3 x 36.2)	3
82169	Round fluted tray	14 (35.6) dia	3
82170	Round fluted tray	16 (40.6) dia	3
82172	Oval fluted tray	17⅞ x 13 (44.8 x 33.0)	3
82173	Oval fluted tray	21⅞ x 15½ (53.6 x 39.4)	3