

Double-Wall Insulated Serving Bowls

- Heavy-gauge stainless steel will not affect taste or color of food
- Mirror-finished exterior for an upscale look
- Satin-finished interior hides scratches and wear



ITEM #	CAPACITY: QT (L)	DIMENSIONS (DIA): IN (CM)	CASE LOT
CONICAL BOWLS			
46575	.62 (.59)	6 ⁵ / ₈ x 2 ³ / ₄ (16 x 6.9)	1
46576	1.4 (1.3)	7 ³ / ₄ x 3 ¹ / ₂ (20 x 8.8)	1
46577	2.5 (2.4)	9 ⁹ / ₃₂ x 4 ¹ / ₄ (24 x 10.8)	1
46578	2.8 (2.6)	11 x 3 ³ / ₈ (28 x 9.8)	1
46579	6.4 (6.1)	11 x 7 ¹ / ₄ (28 x 19.7)	1
46581	1.7 (1.6)	13 x 2 (33 x 5.1)	1
TRUMPET BOWL			
47664	3.4 (3.2)	9 ⁵ / ₈ x 5 ¹ / ₂ (24.5 x 14)	4

Covers for Double-Wall Round Bowls

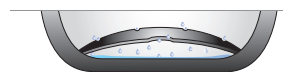
- 18-8 stainless steel
- Combination satin/mirror finish for beautiful food presentations
- Innovative way to display trayed foods while keeping them cold
- Tray can be used as cover for double-wall bowl or as a stand-alone display item



ITEM #	DIAMETER: IN (CM)	FITS	CASE LOT
82005	5 ¹ / ₈ (14.4)	46587	3
82006	7 ¹ / ₄ (18.4)	46590	10

False Bottom for Double-Wall Round Bowls

- Dome design drains liquid away from food product
- Finger hole for easy removal
- Satin-finished stainless steel



As shown in base of bowl



ITEM #	DESCRIPTION	TOP DIA X HEIGHT: IN (CM)	CASE LOT
46615	For 46592, 46668, and 47688 Bowls	6 ³ / ₄ x 1 ¹ / ₈ (17.2 x 2.1)	6