

PATTERNED PANTS



CHEF PANTS - WOVEN CHALKSTRIPE

- ◆ Relaxed, universal fit; elastic drawstring waist
- ◆ Two side-seam pockets
- ◆ 65/35 poly-cotton blend
- ◆ Color display box only available with full case (FC) qty

Refer to size chart at back of catalog



ITEM	COLOR	SIZE	UOM	CASE	QTY/FC
UNF-3CS	Chalkstripe	S	Each	12/24	12
UNF-3CM	Chalkstripe	M	Each	12/24	12
UNF-3CL	Chalkstripe	L	Each	12/24	12
UNF-3CXL	Chalkstripe	XL	Each	12/24	12
UNF-3CXXL	Chalkstripe	2X	Each	12/24	12



UNF-3CM



Individually packaged in printed poly-bag

Color box with full case purchase



Woven pattern



Elastic drawstring waist



CHEF PANTS - HOUNDSTOOTH

- ◆ Relaxed, universal fit; elastic waistband with inner drawstring
- ◆ Two side-seam pockets
- ◆ 65/35 poly-cotton blend
- ◆ Color display box only available with full case (FC) qty

Refer to size chart at back of catalog



ITEM	COLOR	SIZE	UOM	CASE	QTY/FC
UNF-4KS	Houndstooth	S	Each	12/24	12
UNF-4KM	Houndstooth	M	Each	12/24	12
UNF-4KL	Houndstooth	L	Each	12/24	12
UNF-4KXL	Houndstooth	XL	Each	12/24	12
UNF-4KXXL	Houndstooth	2X	Each	12/24	12

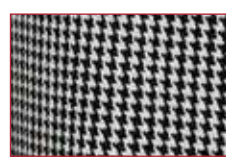


UNF-4KM

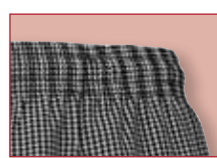


Individually packaged in printed poly-bag

Color box with full case purchase



Pattern



Elastic waistband, inner drawstring

