

# Tray Delivery Carts

## Premier Series™ High Capacity - Stainless Steel



Model 835



### Specifications

Unit shall be of welded and riveted type 304 stainless steel construction and shall accommodate either 14" x 18" (356 x 457 mm) or 15" x 20" (381 x 508 mm) meal trays. Back, top and sides shall be of 18-gauge stainless steel. Floor/base shall be of 18-gauge stainless steel and shall have drain(s) to facilitate cleaning. Tray compartment(s) shall feature louvered vents on side and back panels. Angle style tray ledges shall be of 16-gauge stainless steel welded to 14-gauge stainless steel upright frames with 5" (127 mm) spacing. Ledge frame assemblies shall be adjustable to accommodate 14" x 18" or 15" x 20" (508 mm) trays and shall be removable to facilitate cleaning. Door(s) shall be of double pan construction, with 1" (25 mm) rigid fiberglass insulation for sound deadening and shall have a stainless steel flush-mount paddle latch. Door(s) shall be mounted on heavy-duty stainless steel lift-off hinges which allow 270° door swing. Unit shall feature non-marking full-perimeter bumper and stainless steel push handle. Casters shall be extra-load 8" (203 mm) diameter, two fixed and two swivel with brakes, with 2" (51 mm) wide non-marking rounded cushion tread wheels. Unit shall be NSF listed.

#### Models 831 and 832 only:

Castors shall be extra-load 6" (152 mm) diameter, two fixed and two swivel with brakes, with 2" (51 mm) wide non-marking rounded cushion tread wheels.

### Low profile design for safe, full view during transport.

- Perimeter bumper protects your furnishings and doors.
- Accepts 14" x 18" (356 x 457 mm) or 15" x 20" (381 x 508 mm) trays.
- 5" (127 mm) ledge spacing.
- Doors conveniently open 270° for easy tray access.
- Designed for rugged acute care foodservice use.
- Easy to clean and sanitize. Simply wipe down or steam clean.
- Removable ledge panels for easy cleaning.

Spec. # \_\_\_\_\_

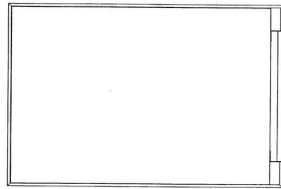
AIA # \_\_\_\_\_

# Tray Delivery Carts

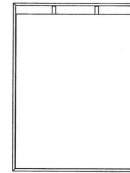
## Premier Series™ High Capacity - Stainless Steel

### Optional Accessories

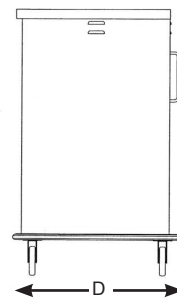
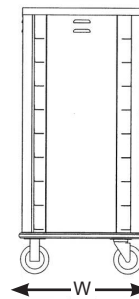
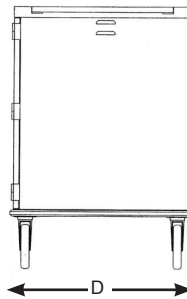
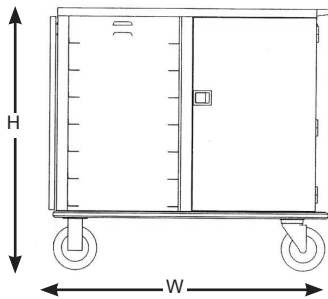
- 8" diameter casters (Models 831 and 832)
- Extra push handle
- Identification card holder
- Decorative laminate door panels



2 Compartment  
Top View



1 Compartment  
Top View



AutoCAD drawings available through KCL CADalog

### Product Information

Model	Tray Capacity	Ledge Spacing	# of Interior Compartments	Overall Size			Lake-Glide® Casters		Case Weight	
				W	D	H	Type	Dia.	lb.	(kg.)
831	18 ea. 14" x 18" (356 x 457) or 15" x 20" (381 x 508)	5" (127)	1	36-3/4" (908)	26-1/8" (664)	56" (1422)	2 swivel, 2 fixed	6"	300	(136)
832	20 ea. 14" x 18" (356 x 457) or 15" x 20" (381 x 508)	5" (127)	1	36-3/4" (908)	26-1/8" (664)	61" (1549)	2 swivel, 2 fixed	6"	320	(145)
835	24 ea. 14" x 18" (356 x 457) or 15" x 20" (381 x 508)	5" (127)	2	51-1/8" (1299)	34-1/8" (867)	41" (1041)	2 swivel, 2 fixed	8"	425	(193)
836	28 ea. 14" x 18" (356 x 457) or 15" x 20" (381 x 508)	5" (127)	2	51-1/8" (1299)	34-1/8" (867)	46" (1168)	2 swivel, 2 fixed	8"	450	(205)
837	32 ea. 14" x 18" (356 x 457) or 15" x 20" (381 x 508)	5" (127)	2	51-1/8" (1299)	34-1/8" (867)	51" (1295)	2 swivel, 2 fixed	8"	475	(216)

Measurements in ( ) denote metric millimeters, unless otherwise specified.



Lakeside Manufacturing, Inc.  
4900 West Electric Avenue • West Milwaukee, WI 53219 U.S.A.  
800-558-8565 • 414-902-6400 • Fax 414-902-6446 • www.eLakeside.com