

RackStar[®] 44 with optional Energy Recovery

Project _____
 Item _____
 Quantity _____
 CSI Section 11400
 Approval _____
 Date _____

Models

RackStar 44 with optional Energy Recovery



Standard Features

- Energy Recovery
- Adjustable Rinse System
- 27kW electric booster heater
- Rainbow Rinse™ with arched rinse arm design
- 19-3/4" (502 mm) clearance
- WISR® Cleaning System
- Double-wall insulated doors retain heat, keeping wash water hot & generating less heat in the dishroom
- Self-cleaning wash arms
- Fully automatic, including auto-fill
- Adjustable vent cowl collars
- Exclusive EnergyGuard™ controls
- Self-draining stainless steel wash pump
- Digital LED control panel
- Strike plate table limit switch
- Large front access for ease of maintenance
- Stainless steel strainer pans
- Splash shields
- Stainless steel frame and legs
- Exhaust vent fan control
- Built-in pressure regulator
- 15kW wash tank heater
- Front dress panel
- Adjustable bullet feet

Mandatory Specs

Specify Voltage _____

Specify Direction of Operation:

- Left to Right
 Right to Left

Options

- Single Point Connection with Onboard Booster (3 phase only)
 23" (584 mm) Unhooded Side Loader
 30" (762 mm) Unhooded Side Loader
 Flanged Feet
 Prison Package

Accessories

- 36-Compartment Rack
 4-1/8" tall (104 mm)
 5 - 5/8" tall (143 mm)
 7" tall (178 mm)
 Combination Rack
 Peg Rack
 Sheet Pan Rack
 Drain Quench System
 Scaltrol
 Water Hammer Arrestor

Specifications

Uses 0.35 gallons of water (1.32 liters) per rack in Econo Rinse mode

Uses 0.52 gallons of water (1.97 liters) per rack in Turbo Rinse mode

Cleans 223 racks per hour

Durable stainless steel construction

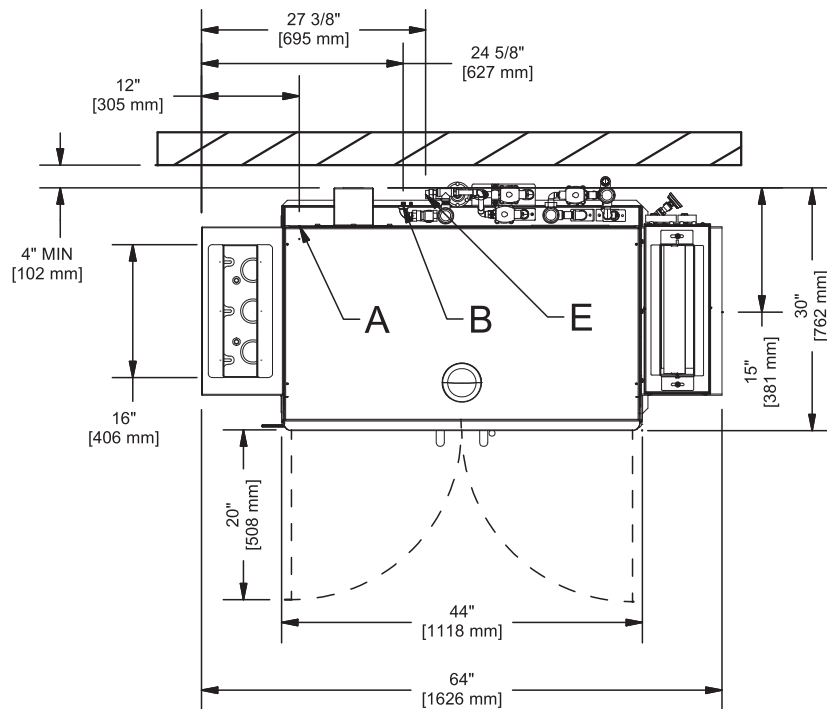
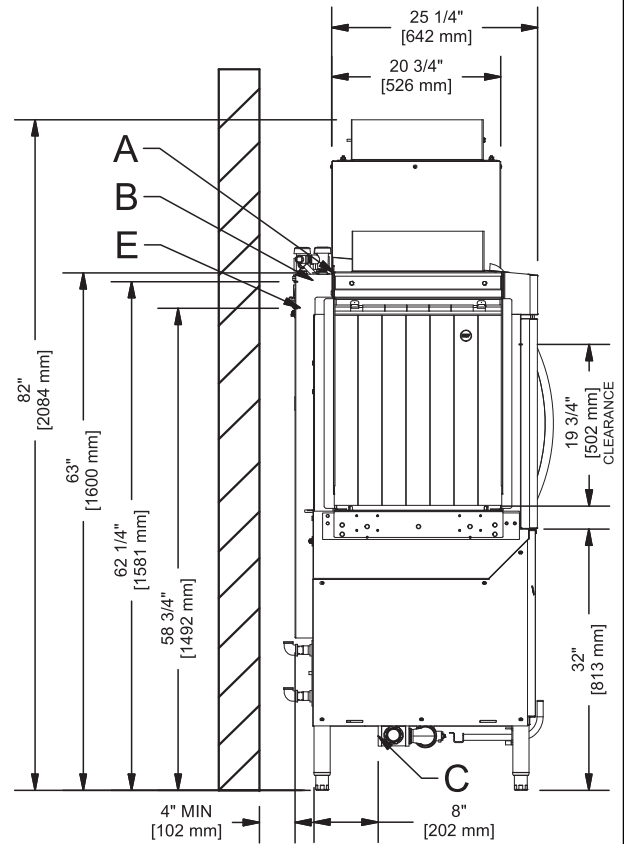
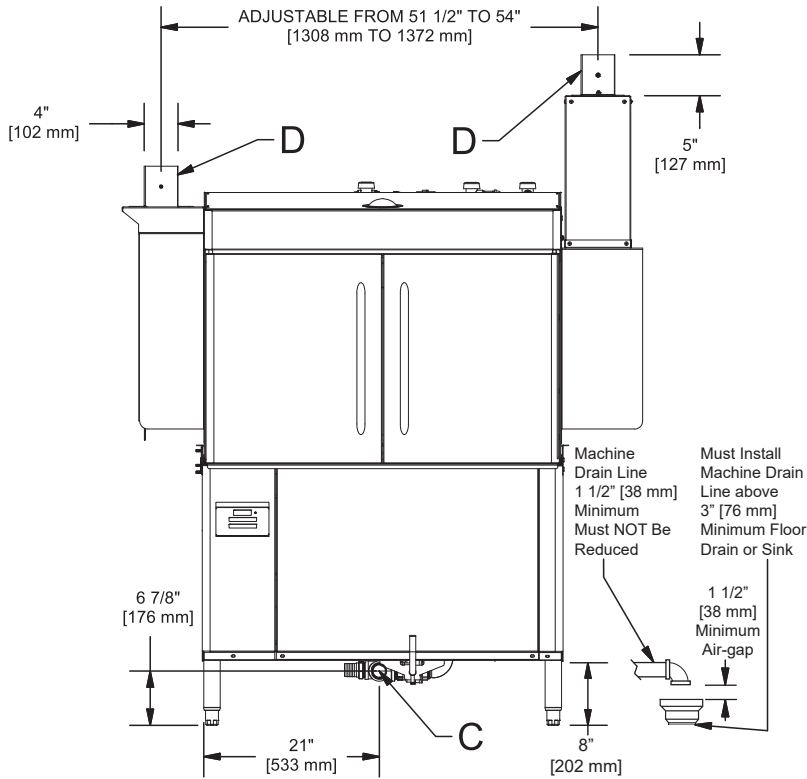


Intertek

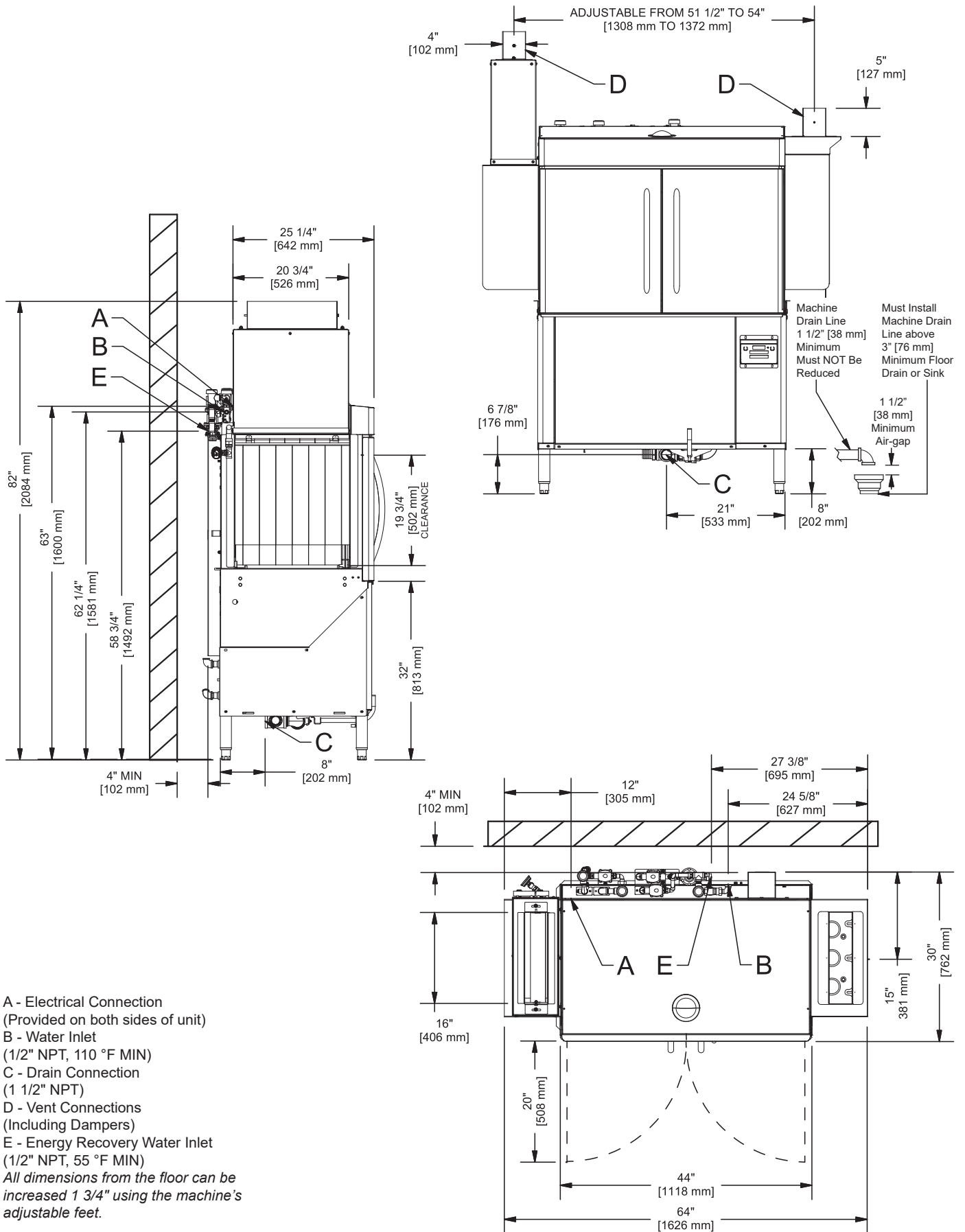


RackStar® 44 with optional Energy Recovery

Left to Right



- A - Electrical Connection
(Provided on both sides of unit)
 - B - Water Inlet
(1/2" NPT, 110 °F MIN)
 - C - Drain Connection
(1 1/2" NPT)
 - D - Vent Connections
(Including Dampers)
 - E - Energy Recovery Water Inlet
(1/2" NPT, 55 °F MIN)
- All dimensions from the floor can be increased 1 3/4" using the machine's adjustable feet.*



A - Electrical Connection
 (Provided on both sides of unit)
 B - Water Inlet
 (1/2" NPT, 110 °F MIN)
 C - Drain Connection
 (1 1/2" NPT)
 D - Vent Connections
 (Including Dampers)
 E - Energy Recovery Water Inlet
 (1/2" NPT, 55 °F MIN)
 All dimensions from the floor can be increased 1 3/4" using the machine's adjustable feet.

RECOMMENDED TABLE FABRICATION

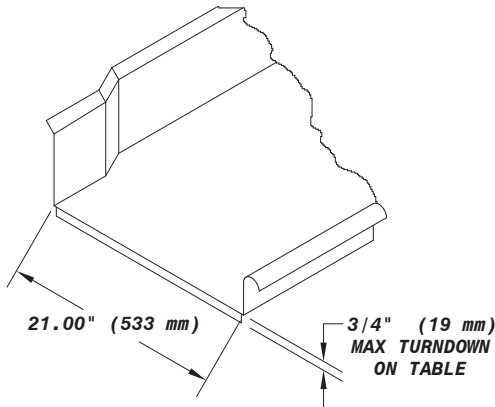
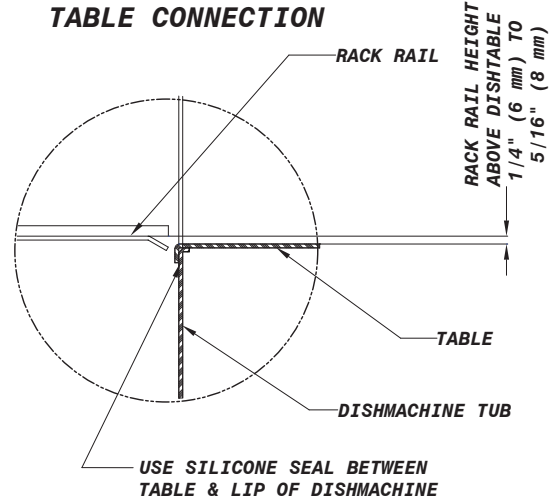


TABLE CONNECTION



MODEL NO.	MACHINE DIMENSIONS				DRAIN HEIGHT	SHIPPING INFORMATION					
	HEIGHT	LENGTH BETWEEN DISHTABLES	DEPTH	DEPTH WITH DOORS OPEN		WEIGHT	CLASS	CUBE	HEIGHT	WIDTH	DEPTH
RackStar 44 ER	80-1/2" (2045 mm)	44" (1118 mm)	30" (762 mm)	50" (1270 mm)	6-1/2" (165 mm)	880 lbs (400 kg)	150	131.94 cu. ft.	75" (1905 mm)	76" (1931 mm)	40" (1016 mm)

OPERATING CAPACITY		
	High-Temperature	Chemical Sanitizing
Racks per Hour	223	223
Dishes per Hour	5,575	5,575
Glasses per Hour	8,028	8,028

WATER REQUIREMENTS	
Hot water inlet temperature (minimum)	110° F (43° C)
Cold water inlet temperature (minimum)	55° F (43° C)
Gallons per Hour (Econo Rinse mode)	78 gal (295 L)
Gallons per Hour (Turbo Rinse mode)	116 gal (239.1 L)
Gallons per Rack (Econo Rinse mode)	0.35 gal (1.3 L)
Gallons per Rack (Turbo Rinse mode)	0.52 gal (1.97 L)
Waterline Size NPT	1/2"
Drainline Size IPS (minimum)	1-1/2"
Flow Pressure (PSI)	15
Flow Rate GPM (minimum)	1.3 (4.9 LPM)
Wash Tank Capacity	25 gal (95 L)

OPERATING TEMPERATURES		
	High-Temperature	Chemical Sanitizing
Wash (minimum)	160° F (71° C)	120° F (49° C)
Rinse (minimum)	180° F (82° C)	120° F (49° C)

WASH PUMP	
Wash Pump Motor	3 hp
Wash Pump Capacity	270 GPM (1022 LPM)

ELECTRICAL REQUIREMENTS	
Approximate Total Load AMPS	
208V/60HZ/3PH	51.3
208V/60HZ/1PH	83.9
230V/60HZ/3PH	44.1
230V/60HZ/1PH	71.7
460V/60HZ/3PH	22.1

CONVEYOR	
Conveyor Motor	1/4 hp
Conveyor Speed (feet per minute)	6.07 FPM (1.85 MPM)

BOOSTER HEATER ELECTRICAL REQUIREMENTS		
	70° F (38.9° C) Minimum Rise	
	kW	AMPS
208V/60HZ/3PH	27	75
208V/60HZ/1PH	27	130
230V/60HZ/3PH	27	65
230V/60HZ/1PH	27	113
460V/60HZ/3PH	27	33

VENTING REQUIREMENTS	
Input End	175 CFM
Output End	175 CFM
Total CFM	350 CFM

*Total amp draw for a single point connection with onboard booster heater (3 phase only) is calculated by adding the amp load for the booster heater to the amp load for the machine.

HOW TO SPECIFY: RackStar 44 with Energy Recovery

Jackson WWS, Inc.

Shipping Address: 6209 North U.S. Highway 25E, Gray, KY 40734
 Mailing Address: P.O. Box 1060, Barbourville, KY 40906
 Telephone: 888-800-5672 • Fax: 606-523-1799
 Email: info@jacksonwws.com
 07610-004-41-36 [03/20/18]

www.jacksonwws.com