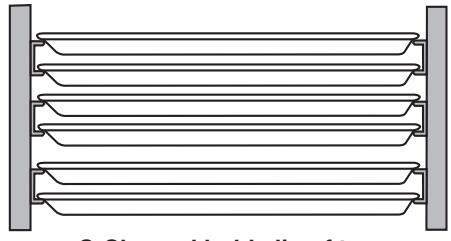




ALC-1836

Channel Pan Racks

- Material: All welded aluminum, C-Channel is 1-1/2" x 1 with a lip of 5/8"
- Rolling Capacity: 800lbs.
- Weight Capacity Per Runner: 30lbs
- **Lifetime Warranty Against Rust**
Application: Designed for maximum storage capacity in bakeries, restaurants, industrial areas where high and low profile products are stored.
- Holds:
18" x 26" Sheet Pans by lip
14" x 18" Sheet Pans by lip
- Casters: 5" Polyurethane Swivel Stem



C-Channel holds lip of tray

Model Number	Order#	Overall Dimensions						Pan Cap. 18"x26" 14"x18"	Runner Spacing		Approx. Ship Wt	
		Width		Length		Height			(in)	(mm)	(lb)	(kg)
		(in)	(mm)	(in)	(mm)	(in)	(mm)					
ALC-1836	110648	21	533	27	686	64	1,626	36 72	3	76	40	18
ALC-1840	110672	21	533	27	686	64	1,626	40 80	1½	38	42	19

Caster information:
Caster with 5" Polyurethane Wheel 757 (123684)
5" Polyurethane Wheel 7112 (122180)
Freight Class: 250



Option: Specify options by adding suffix to Model Numbers
XB XHD Reinforced Upright



WP-1836B

Wire Pan Rack

- Material: Aluminum Frame 1" tubing with Chrome Steel Wire Slides, runner spacing 1-1/2"
- Application: Ideal for cooling, transporting, storing and proofing. Half size racks double as mobile work stations.
- Holds:
18" x 26" Sheet Pans by lip
14" x 18" Sheet Pans by lip
- Casters: 5" Polyurethane Swivel Stem
- Rolling Capacity: 800lbs.
- Weight Capacity Per Runner: 30lbs



WP-1830D/PT Polytop Workstation



WP-1815D/PPT Polytop Workstation

Model Number	Order#	Overall Dimensions						Pan Cap. 18"x26" 14"x18"	Approx. Ship Wt	
		Width		Length		Height			(lb)	(kg)
		(in)	(mm)	(in)	(mm)	(in)	(mm)			
WP-1836B	111034	21	533	24	610	68	1,727	36 72	67	30
WP-1815 / PPT	110947	21	533	25	635	32	813	15 30	47	21
WP-1830D / PT	110998	46	1,168	25	635	32	813	30 60	74	34

Caster information:
Caster with 5" Polyurethane Wheel 757 (123684)
5" Polyurethane Wheel 7112 (122180)
Freight Class: 250