



BEVERAGE-AIR

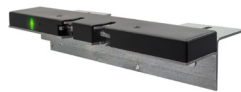
Project: _____	AIA#
Item: _____	
Location: _____	SIS#
Approved: _____	

GLASS DOOR REFRIGERATOR: MERCHANDISER SERIES

MARKETMAX REFRIGERATOR

MMR49HC Black Hinged Double Glass Door With Electronic Lock
Hydrocarbon Series

MODEL:
MMR49HC-1-B-IQ



3 Year Parts/Labor Warranty

Additional 4 Year Compressor Warranty

CABINET CONSTRUCTION

- Exterior finish is heavy duty steel with a black baked on durable coating
- Heavy duty interior construction includes white coated steel walls
- Modern one-piece grille
- Full electronic control
- Refrigerator have double pane lowE argon filled glass doors
- 120° stay open door feature, with automatic stay open feature
- Snap-in gaskets, easy to remove for cleaning or replacement
- Field reversible door (hinge kit not included)
- LED lighting, standard
- Five (5) brightly lighted sign options (at time of order)
- Five (5) heavy duty epoxy coated wire shelves per section
- Four (4) shelf clips included per shelf
- Self-contained bottom mount refrigeration system
- Maintains product temperatures of 36°F and 38°F

OPTIONS & ACCESSORIES

- White or stainless steel exterior option
- Black or stainless steel interior option
- Shelves black or white
- Shelf clips
- Flow track
- Gravity flo kits
- Novelty basket
- Price tag molding
- Custom sign panel
- Custom graphics
- 6" Seismic/flanged legs
- 3" or 6" Casters
- Remote option* (see note on back on page)

ELECTRONIC SMART LOCK FEATURES

- Secure temperature-sensitive product for worry-free operation
- LED indicator to quickly view status
- Easy-access test switch for health inspectors
- Built-in safety feature allow escape in case of accidental lock-in

REFRIGERATION SYSTEM

- Uses environmentally friendly, energy efficient R290 refrigerant, and meets all regulatory requirements for CARB, SNAP, DOE & more
- Adaptive defrost
- Non-Electric defrost with hot gas condensate evaporation




Please verify qualifying units by visiting:
www.energystar.gov/cfs

3779 Champion Blvd., Winston-Salem, NC 27105
1-888-845-9800 Fax: 1-336-245-6453
Beverage-Air.com Sales@bevair.com



BEVERAGE-AIR®

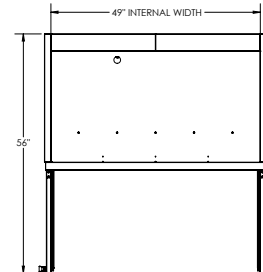
Glass Door Merchandisers - Hinged Door Model Model: MMR49HC-1-B-IQ

MODEL	MMR49HC-1-B-IQ
EXTERNAL DIMENSIONAL DATA	
Width Overall	52"
Depth Overall with Handle	33 1/2"
Height Overall	78"
Number of Doors	2
Depth with Door Open 90°	56"
Door Opening (in)	22 5/8" x 52 5/8"
INTERNAL DIMENSIONAL DATA	
NET Capacity (cubic ft.)	46.15
Internal Width Overall (in)	49"
Internal Depth Overall (in)	26"
Internal Height Overall (in)	53"
Number of Shelves	10
ELECTRICAL DATA	
Full Load Amperes	5.0
REFRIGERATION DATA	
Horsepower*	1/3
Capacity (BTU/Hr)*	2392
WEIGHT DATA	
Gross Weight	614 lbs
Height - Crated	82"
Width - Crated	55"
Depth - Crated	37"

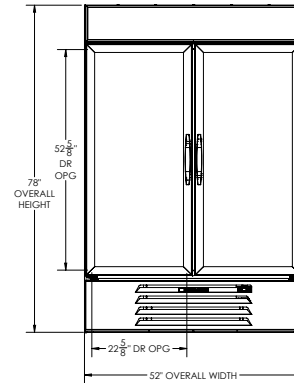
*NOTE: Remote units are field wired and comes with 6" legs.
Refrigerant must be specified at time of order.

Model Views

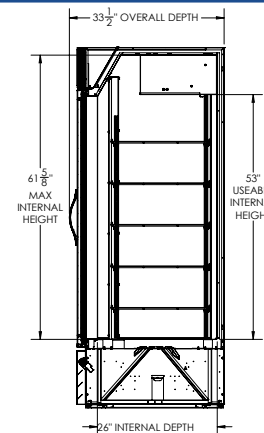
Required Clearance: Top 12", Rear 3", Sides 0"



PLAN VIEW



ELEVATION VIEW



SIDE VIEW

*ELECTRICAL CONNECTION



115/60/1
NEMA 5-15P

Units pre-wired at factory and include 8' long cord and plug set.



3779 Champion Blvd., Winston-Salem, NC 27105 1-888-845-9800 Fax: 1-336-245-6453 Beverage-Air.com Sales@bevair.com

an Ali Group Company



The Spirit of Excellence