



**BEVERAGE-AIR**

Project: \_\_\_\_\_

AIA#

Item: \_\_\_\_\_

Location: \_\_\_\_\_

SIS#

Approved: \_\_\_\_\_

**MARKETEER™ MERCHANDISERS**

MT53 White Sliding Door Model  
Hydrocarbon Series

**MODEL:  
MT53-1SDW**

**MT53™  
MERCHANDISER:  
SLIDING DOOR MODEL**



**3 Year Parts/Labor Warranty  
Additional 4 Year Compressor Warranty**

**CABINET CONSTRUCTION**

- Standard cabinet exterior finish is heavy duty steel with a white baked on durable coating
- Heavy duty interior construction includes white coated steel
- Electronic temperature control
- Modern one piece grill
- Double pane lowE argon filled glass doors feature outside pane that is tempered for added safety
- Self-closing sliding glass door, black door frames regardless of exterior color
- Pocket door handle
- LED lighting
- Five (5) epoxy coated shelves per section
- 2" Leveling feet

**OPTIONS & ACCESSORIES**

- Extra shelves & clips
- 3" Casters
- Visislide shelving kit

**REFRIGERATION SYSTEM**

- Uses environmentally friendly, energy efficient R290 refrigerant, and meets all regulatory requirements for CARB, SNAP, DOE & more
- Condenser is designed to be low maintenance, and energy efficient.
- Automatic, non-electric defrost
- Epoxy coated evaporator coil



Please verify qualifying units by visiting:  
[www.energystar.gov/cfs](http://www.energystar.gov/cfs)

3779 Champion Blvd., Winston-Salem, NC 27105  
1-888-845-9800 Fax: 1-336-245-6453  
Beverage-Air.com Sales@bevair.com



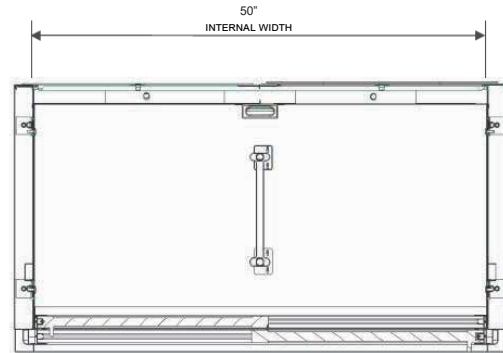
# BEVERAGE-AIR

| MODEL                            | MT53-1SDW         |
|----------------------------------|-------------------|
| <b>EXTERNAL DIMENSIONAL DATA</b> |                   |
| Width Overall                    | 54 1/4"           |
| Depth Overall                    | 28 9/16"          |
| Height Overall                   | 78 5/8"           |
| Number of Doors                  | 2                 |
| Clear Door Openings (in)         | 22 3/4" x 59 3/8" |
| <b>INTERNAL DIMENSIONAL DATA</b> |                   |
| NET Capacity (cubic ft.)         | 41.66             |
| Capacity 20 oz                   | 480               |
| Internal Width Overall (in)      | 50"               |
| Internal Depth Overall (in)      | 23 1/4"           |
| Internal Height Overall (in)     | 59 11/16"         |
| Internal Height Useable (in)     | 54"               |
| Number of Shelves                | 10                |
| <b>ELECTRICAL DATA</b>           |                   |
| Full Load Amperes 115/60/1       | 8.7               |
| <b>REFRIGERATION DATA</b>        |                   |
| Horsepower                       | 1/2+              |
| Energy Consumption               | 5.506 kWh/day     |
| <b>SHIPPING DATA</b>             |                   |
| Gross Weight - Crated            | 484 lbs           |
| Height - Crated                  | 85 3/8"           |
| Width - Crated                   | 57"               |
| Depth - Crated                   | 33"               |

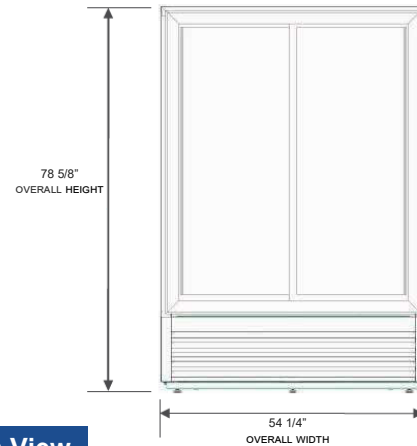
## Glass Sliding Door Model

Models: MT53-1SDW

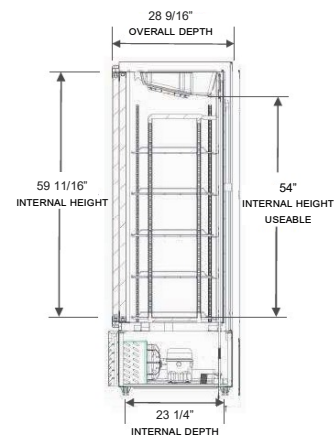
### Model Views



Plan View



Elevation View



Side View

### ELECTRICAL CONNECTION



115/60/1  
NEMA-5-15P

Units pre-wired at factory and include 8' long cord and plug set.



3779 Champion Blvd., Winston-Salem, NC 27105 1-888-845-9800 Fax: 1-336-245-6453 Beverage-Air.com Sales@bevair.com

an Ali Group Company



The Spirit of Excellence