



BEVERAGE-AIR

Project: _____

AIA#

Item: _____

Location: _____

SIS#

Approved: _____

P-SERIES TOP MOUNTED FREEZER

PF12-1AS Solid Double Door Roll-In Freezer

MODELS:
PF12-1AS



PF12-1AS

3 Year Parts/Labor Warranty
Additional 2 Year Compressor Warranty

CABINET CONSTRUCTION

- Stainless steel exterior
- Interior liner is made of corrosion resistant aluminum
- Full electronic control
- LED lighting standard
- Expansion Valve technology
- Self-closing doors on cam-lift hinges, with 120° hold open feature
- One piece snap-in magnetic door gaskets for positive seal
- Stainless steel breakers
- Reinforced stainless steel door ramps outside and cart guides inside
- Accepts carts up to 24 3/8" (W) x 26" (D) x 64 1/2" (H) (Cart not included)
- Wiper gasket at bottom of door seals door to ramp
- Door locks standard
- Anti-Microbial door handles
- Maintains product temperatures of 0° F and below

OPTIONS & ACCESSORIES

- Stainless steel interior
- Remote option

REFRIGERATION SYSTEM

- Refrigeration system uses R404A
- Automatic, electric defrost
- Epoxy coated evaporator coil

PF12-1AS Top Mount Models: P Series



3779 Champion Blvd., Winston-Salem, NC 27105
1-888-845-9800 Fax: 1-336-245-6453
Beverage-Air.com sales@bevair.com



BEVERAGE-AIR

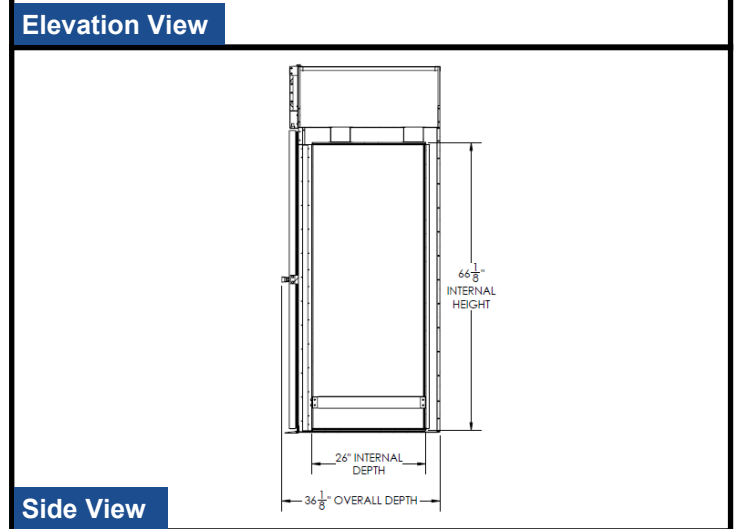
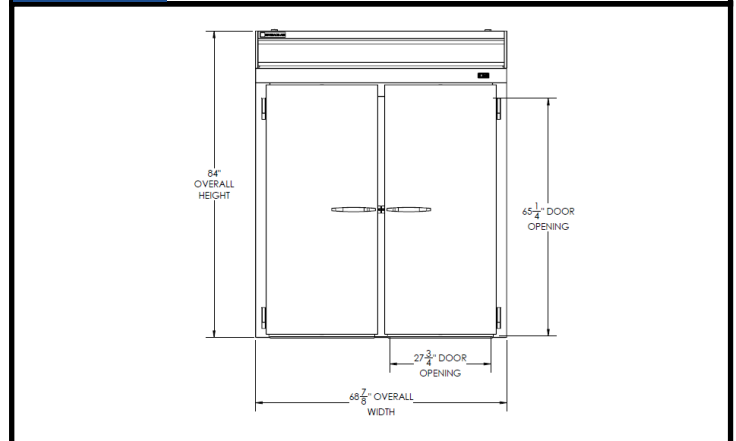
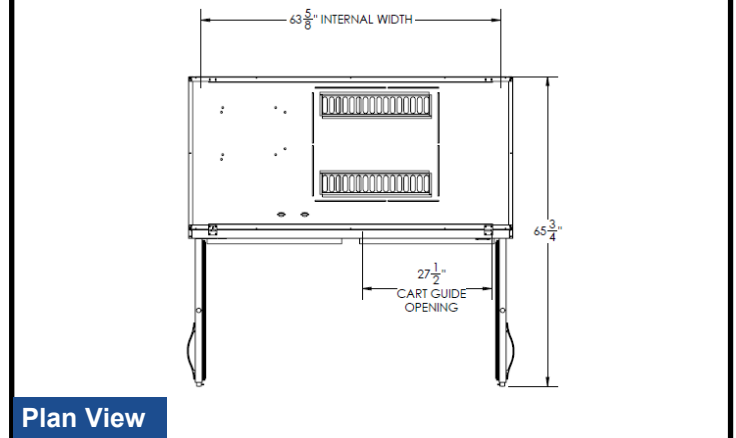
P Series - Top Mount Freezer

Models: PF12-1AS

MODEL	PF12-1AS
EXTERNAL DIMENSIONAL DATA	
Width Overall	68 7/8"
Depth Overall with Handle	36 1/8"
Height Overall	84"
Number of Doors	2
Depth with Door Open 90°	65 3/4"
Door Opening (in)	27 3/4" x 65 1/4"
INTERNAL DIMENSIONAL DATA	
NET Capacity (cubic ft.)	71
Internal Width Overall (in)	63 5/8"
Internal Depth Overall (in)	26"
Internal Height Overall (in)	66 1/8"
ELECTRICAL DATA	
Full Load Amperes 115/208-230*	13.9
REFRIGERATION DATA	
Horsepower	1
Capacity (BTU/Hr)*	3730
WEIGHT DATA	
Gross Weight (Crated lbs)	520 lbs
Height - Crated	88"
Width - Crated	78"
Depth - Crated	45"

*Freezers powered by 115/208-230 volts are designed for field wiring (requires 3-wire electrical circuit, hard-wired).

Model Views



an Ali Group Company



3779 Champion Blvd., Winston-Salem, NC 27105
 1-888-845-9800 Fax: 1-336-245-6453
 Beverage-Air.com sales@bevair.com