



# BEVERAGE-AIR

Project: _____	AIA#
Item: _____	
Location: _____	SIS#
Approved: _____	

**BF054AP COUNTER TOP CHILLER: BLAST CHILLER / FREEZER**

## COUNTER TOP BLAST CHILLER

BF054AP Blast Chiller/Freezer

**MODEL:  
BF054AP**



**3 Year Parts/Labor Warranty  
Additional 2 Year Compressor Warranty**

### CABINET CONSTRUCTION

- Soft and hard, timed or core probe blast chilling
- Soft and hard, timed or core probe shock freezing
- Automatic recognition of core probe
- Multi point sensor temperature display button
- Core probe heater button
- USB data recorder/interface
- HACCP alarm display button
- Pre-cooling cycle button
- Adjustable evaporator fan speed button
- Timed manual defrost button
- Infinity mode program with adjustable set point
- Automatic conservation mode at end of cycle
- On board recipe book with 68 pre-set programs
- 99 Free memory positions for custom programs
- LCD illuminated temperature display
- Real time clock
- RS 485 connection
- One, high precision heated multi sensor probe
- Adjustable stainless steel feet

### OPTIONS & ACCESSORIES

- UV sterilization lamp
- Single sensor probes (up to 4 possible)
- Casters with brakes

### REFRIGERATION SYSTEM

- The self-contained refrigeration system uses R404a refrigerant
- Hermetically sealed compressor with overload protection
- Evaporator fitted with a high flow rate fan insures maximum cooling efficiency
- Indirect air flow assures highest product quality
- Manual defrosting with door open on a timed cycle
- Evap. Temp -10°F, ambient temp. 90°F



Please verify qualifying units by visiting:  
[www.energystar.gov/cfs](http://www.energystar.gov/cfs)

3779 Champion Blvd., Winston-Salem, NC 27105  
1-888-845-9800 Fax: 1-336-245-6453  
Beverage-Air.com Sales@bevair.com



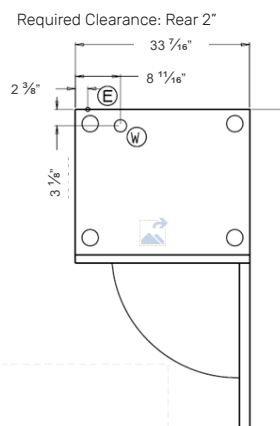
# BEVERAGE-AIR

MODEL	BF054AP
<b>EXTERNAL DIMENSIONAL DATA</b>	
Width Overall	33 7/16"
Depth Overall	29 15/16"
Height Overall with Casters	33 7/16"
Number Doors	1
Depth with Door Open 90°	61 13/16"
Door Opening	14 15/16" x 28 3/4"
<b>INTERNAL DIMENSIONAL DATA</b>	
Chilling Capacity in 90 min (lbs.)	45
Freezing Capacity in 240 min (lbs.)	30
Sheet Pan Capacity	5
Size of Pans	18x26x1
Centers Between Pans (in.)	2.56
<b>ELECTRICAL DATA</b>	
Full Load Amperes	6.1
<b>REFRIGERATION DATA</b>	
Horsepower	1
Capacity (BTU/Hr)	3879
<b>SHIPPING DATA</b>	
Gross Weight - Crated	307 lbs
Height - Crated	41"
Width - Crated	37"
Depth - Crated	33"

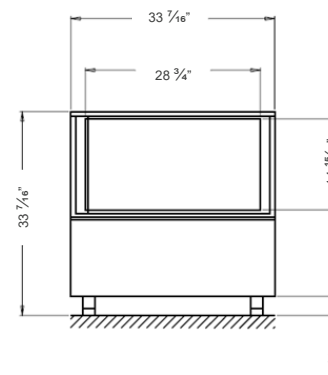
## Blast Chiller/Freezer

Model: BF054AP

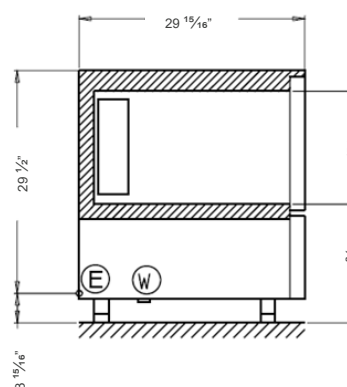
### Model Views



### PLAN VIEW



### ELEVATION VIEW



### SIDE VIEW

### \*ELECTRICAL CONNECTION



208-240/60/1  
NEMA 6-15P

Unit pre-wired at  
factory and include 8'  
long cord and plug set.



3779 Champion Blvd., Winston-Salem, NC 27105 1-888-845-9800 Fax: 1-336-245-6453 Beverage-Air.com Sales@bevoir.com

an Ali Group Company



The Spirit of Excellence