



# BEVERAGE-AIR

Project: _____	AIA#
Item: _____	
Location: _____	SIS#
Approved: _____	

## OPEN-AIR MERCHANDISER

### VMHC-12 Open-Air Merchandiser Hydrocarbon Series

**MODEL:**  
**VMHC-12-1-W**



**3 Year Parts/Labor Warranty**  
**Additional 4 Year Compressor Warranty**

### CABINET CONSTRUCTION

- Exterior is white powder coated galvanized metal
- Interior is painted steel for easy cleaning
- Electronic temperature control
- LowE double-pane glass tempered thermal sides
- Foamed in place CFC free polyurethane insulation enhances the structural strength of the cabinet and helps increase energy efficiency
- Shelves included can be installed in 2 positions for display flexibility
- Price tag molding
- 6" Adjustable legs
- Night curtain comes standard and helps save energy and maintain cabinet temperature.
- Operating temperature 36°F - 40°F
- Intended for use in rooms having ambient condition or 75°F/55% humidity
- LED lighting standard
- Certified for bottled beverages and packaged food product

### OPTIONS & ACCESSORIES

- Gray and black exterior option
- Front display merchandiser
- Side saddle merchandiser
- WonderBar/peg bar merchandiser
- 3" Casters
- 5" Casters
- Reach-in curtains
- Security cage w/lock

### REFRIGERATION SYSTEM

- R290 refrigerant
- Maintenance free condenser slides out for easy service
- Automatic defrost

**VMHC-12 OPEN-AIR MERCHANDISER**



Please verify qualifying units by visiting:  
[www.energystar.gov/cfs](http://www.energystar.gov/cfs)

3779 Champion Blvd., Winston-Salem, NC 27105  
1-888-845-9800 Fax: 1-336-245-6453  
Beverage-Air.com Sales@bevair.com

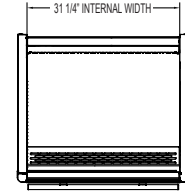


# BEVERAGE-AIR

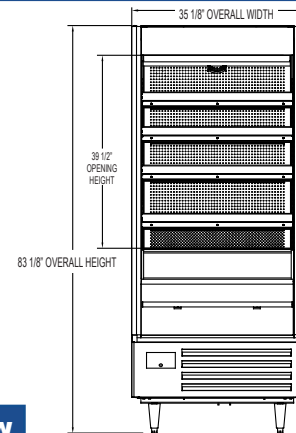
MODEL	VMHC-12-1-W
<b>EXTERNAL DIMENSIONAL DATA</b>	
Width Overall	35 1/8"
Depth Overall	31 3/4"
Height Overall	83 1/8"
<b>INTERNAL DIMENSIONAL DATA</b>	
NET Capacity (cubic ft.)	12.15
Internal Width Overall (in)	31 1/4"
Internal Depth Overall (in)	22"
Internal Height Overall (in)	49 1/8"
Number of Shelves	5
<b>ELECTRICAL DATA</b>	
Full Load Amperes 115/60/1	12.0
<b>REFRIGERATION DATA</b>	
Horsepower*	(2) 1/4
Capacity (BTU/Hr)*	4000
<b>WEIGHT DATA</b>	
Gross Weight	520 lbs
Height - Crated	82 3/4"
Width - Crated	39"
Depth - Crated	36 1/4"

## Open-Air Merchandiser Refrigerator Model: VMHC-12-1-W

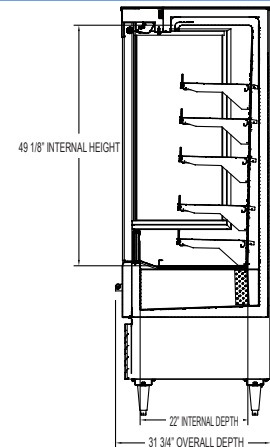
### Model Views



### PLAN VIEW



### ELEVATION VIEW



### SIDE VIEW



### \*ELECTRICAL CONNECTION

115/60/1  
NEMA 5-20P

Units pre-wired at factory and include 8' long cord and plug set.