



BEVERAGE-AIR

Project: _____	AIA#
Item: _____	
Location: _____	SIS#
Approved: _____	

CHEF BASE REFRIGERATOR

MODEL:
WTRCS84HC-89

WTRCS84HC Four Drawer With Extended Top Chef Base
Hydrocarbon Series

WTRCS84HC CHEF BASE REFRIGERATOR

3 Year Parts/Labor Warranty
Additional 4 Year Compressor Warranty

CABINET CONSTRUCTION

- Stainless steel front, sides, drawers and grille (galvanized back & bottom)
- Interior liner is made of corrosion resistant aluminum
- 89" Extended top has full marine edge to prevent spills from dripping over sides
- Full electronic control
- One-piece, snap-in magnetic drawer gasket
- 12-Gauge stainless steel drawer slides with Delrin® rollers rated at 275 lbs
- Lifetime warranty on all drawers and slides
- Heavy duty, fire-proof, reinforced insulated 16 gauge top
- No heat shield required (must adhere to proper clearance per owners manual)
- Accommodates 6" deep full size food service pans (not included)
- Self-closing drawer feature
- Compressor available on left or right, specify at time of unit order
- 3" Casters, 2 with brakes standard



OPTIONS & ACCESSORIES

- Stainless steel back
- Stainless steel interior
- Additional pan supports
- 6" Adjustable legs, 6" seismic legs
- 6" Casters
- Gasket guards
- Flat top overhang
(up to 6" overhang on each side)
- Remote option*
(refrigerant must be specified at time of order, see note on back on page)

REFRIGERATION SYSTEM

- Uses environmentally friendly, energy efficient R290 refrigerant, and meets all regulatory requirements for CARB, SNAP, DOE & more
- Adaptive defrost
- Non-electric defrost with hot gas condensate evaporation
- Maintains product temperature 36°F to 38°F




Please verify qualifying units by visiting:
www.energystar.gov/cfs

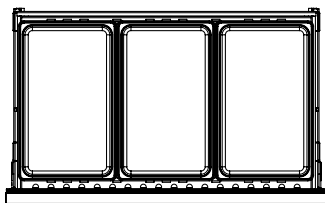
3779 Champion Blvd., Winston-Salem, NC 27105
1-888-845-9800 Fax: 1-336-245-6453
Beverage-Air.com Sales@bevair.co



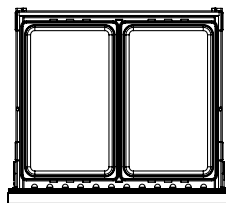
BEVERAGE-AIR

MODEL		WTRCS84HC-89
EXTERNAL DIMENSIONAL DATA		
Width Overall		89"
Depth Overall (with handle & bumper)		34 3/4"
Height Overall (with casters)		24 3/8"
Number of Drawers		4
Depth with Drawers Extended		57 3/4"
Drawer Opening (in)		(L) 40 3/8" x 6 1/2" (R) 27 3/8" x 6 1/2"
INTERNAL DIMENSIONAL DATA		
NET Capacity (cubic ft.)		17.46
Internal Width Overall (in)		70 7/8"
Internal Depth Overall (in)		26"
Internal Height Overall (in)		16 3/8"
ELECTRICAL DATA		
Full Load Amperes		5.0
REFRIGERATION DATA		
Horsepower*		1/3
Capacity (BTU/Hr)*		1997
WEIGHT DATA		
Gross Weight		700 lbs
Height - Crated		28"
Width - Crated		102"
Depth - Crated		38"

*NOTE: Remote units are field wired and comes with 6" legs.
Refrigerant must be specified at time of order.



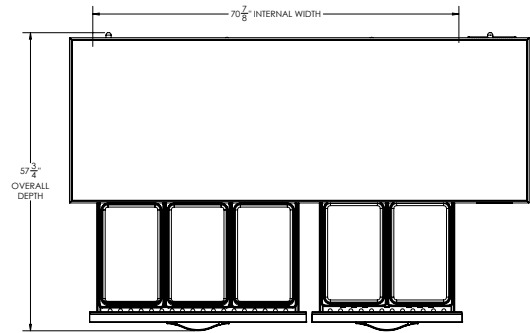
(Per left drawer)



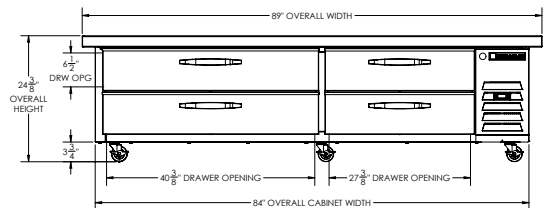
(Per right drawer)

Chef Base Refrigerator Model: WTRCS84HC-89

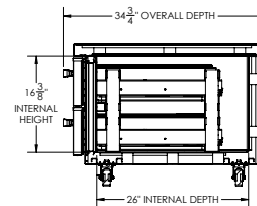
Model Views



PLAN VIEW



ELEVATION VIEW



SIDE VIEW

*ELECTRICAL CONNECTION



115/60/1
NEMA 5-15P

Units pre-wired at factory
and include 8' long cord
and plug set.



an Ali Group Company



The Spirit of Excellence