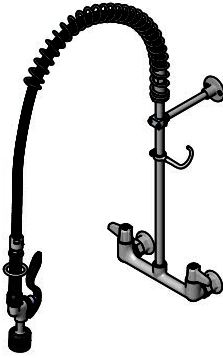
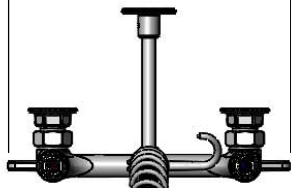


*This Space for Architect/Engineer Approval*

Job Name \_\_\_\_\_ Date \_\_\_\_\_  
 Model Specified \_\_\_\_\_ Quantity \_\_\_\_\_  
 Customer/Wholesaler \_\_\_\_\_  
 Contractor \_\_\_\_\_  
 Architect/Engineer \_\_\_\_\_

11 3/4"  
[299mm]



44" Flexible  
Stainless Steel  
Hose w/ Spring  
& Spray Valve

31 7/16"  
[798mm]

Items not Shown  
for Clarity

3/8" NPT x 18" Riser

Finger Hook

Ceramic Cartridges  
& equip Lever Handles  
w/ Color Coded Screws

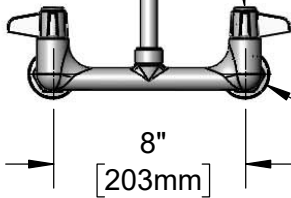
013716-40  
6" Wall  
Bracket

5SV-C  
1.20 GPM  
Spray Valve

Mounting  
Surface

13/16"  
[21mm]

16 1/2"  
[419mm]



8"  
[203mm]  
Adjustable From  
7 3/4" to 8 1/4"  
[197mm to 210mm]

Ø 2" [51mm]  
Flanges w/  
Inline Check  
Valves & 1/2" NPT  
Female Inlets



B-0230-K  
1/2" NPT  
Short EI Installation Kit  
(Sold Separately)

Model Number

**5PR-8W00-C**

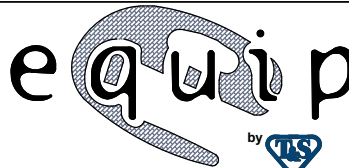
Product Specifications:

Pre-Rinse Unit: 8" Wall Mount Mixing Faucet, Quarter-Turn Ceramic Cartridges, 6" Wall Bracket, 1.20 GPM Spray Valve, In-Line Check Valves, 44" Flex Hose & 1/2" NPT Female Inlets

Product Compliance:

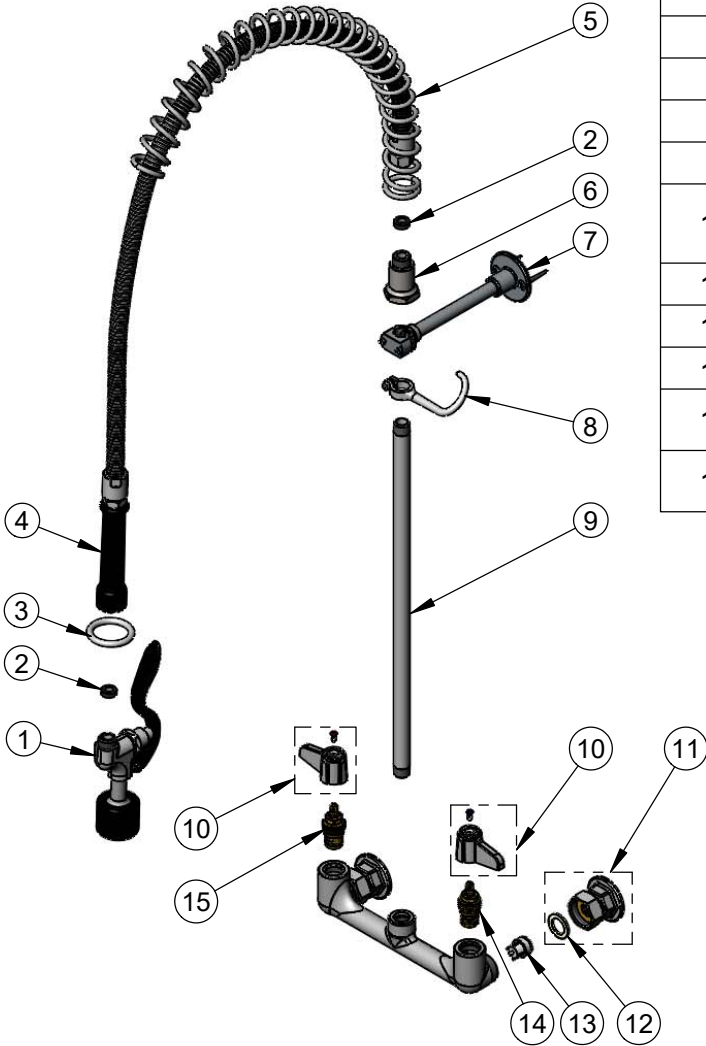
ASME A112.18.1 / CSA B125.1  
 NSF 61 - Section 9  
 NSF 372 (Low Lead Content)  
 2019 DOE PRSV - Class II

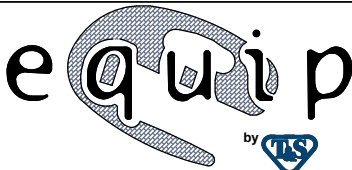
equip  
Foodservice  
Accessories



2 Saddleback Cove, P.O. Box 1088  
 Travelers Rest, South Carolina 29690  
 Phone: 800.891.4808 Fax: 800.868.0084  
 equip.tsbrass.com

ITEM NO.	SALES NO.	DESCRIPTION
1	5SV-C	equip 1.20 GPM Low Flow Spray Valve
2	010476-45	#27 Washer
3	000907-45	Spray Valve Hold Down Ring
4	5HSE44	44" Flexible Stainless Steel Hose
5	014068-45	Overhead Spring
6	000821-40	Spring Body
7	013716-40	6" Wall Bracket
8	004R	Finger Hook
9	000369-40	3/8" NPT x 18" Riser
10	5-HDL-L	equip Lever Handle w/ Color Coded Screws
11	00AA	1/2" NPT Female Inlet Flange
12	001019-45	Coupling Nut Washer
13	013840-45	20mm Check Valve (2)
14	013788-45	equip Quarter-Turn Ceramic Cartridge, LTC
15	013787-45	equip Quarter-Turn Ceramic Cartridge, RTC



<b>Model Number</b> <p style="text-align: center;"><b>5PR-8W00-C</b></p>		<b>Product Specifications:</b> <p style="text-align: center;">Pre-Rinse Unit: 8" Wall Mount Mixing Faucet, Quarter-Turn Ceramic Cartridges, 6" Wall Bracket, 1.20 GPM Spray Valve, In-Line Check Valves, 44" Flex Hose &amp; 1/2" NPT Female Inlets</p>	
<b>Product Compliance:</b> ASME A112.18.1 / CSA B125.1 NSF 61 - Section 9 NSF 372 (Low Lead Content) 2019 DOE PRSV - Class II			
Drawn: KJG    Checked: JRM		Approved: JHB    Date: 08/23/19    Scale: NTS    Sheet: 2 of 2	

2 Saddleback Cove, P.O. Box 1088  
 Travelers Rest, South Carolina 29690  
 Phone: 800.891.4808 Fax: 800.868.0084  
 equip.tsbrass.com