

ITEM #: _____ QTY: _____
 MODEL #: _____
 PROJECT NAME: _____

011218

3601 S. Banker St. Effingham, IL 62401 • P.O. BOX 609 • Ph: (888) 431-2667 • Fax: (800) 433-2667

“EDSC” ECONOMY DISH STORAGE CABINETS - 18GA

FEATURES:

- DISH CABINET W/ OPEN BASE - 18" DEPTH,
BUFFET CABINET W/ OPEN BASE - 15" DEPTH
- FLAT TOP WITH 1-1/2" STALLION EDGE ON FRONT AND 90
DEGREE BEND DOWN ON SIDE EDGE FOR TABLE LINE UP
- TOP IS SOUND DEADENED
- STAINLESS STEEL LEGS WITH ADJUSTABLE BULLET FOOR
- FIXED MID SHELF
- SHIPPED STANDARD WELDED SET UP

CONSTRUCTION:

- TOP: STAINLESS STEEL CABINET TOPS TIG WELDED,
EXPOSED WELDS ARE POLISHED TO MATCH ADJACENT
SURFACE #4 POLISHED, STATIN FINISH

MATERIAL:

- TOP: 18 GAUGE TYPE 300 STAINLESS STEEL W/ #4
POLISH SATIN FINISH
- BODY: 18 GAUGE TYPE 300 STAINLESS STEEL
- LEGS: STAINLESSS STEEL W/ ADJUSTABLE
BULLET FEET

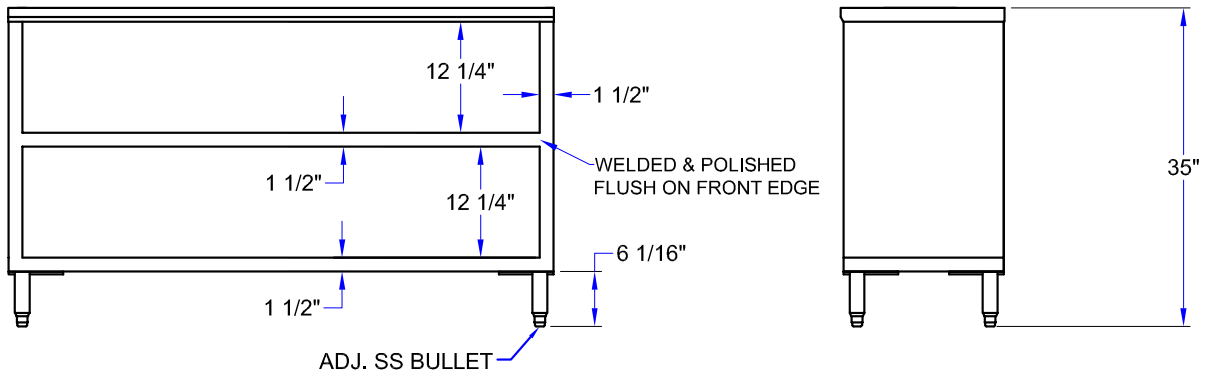
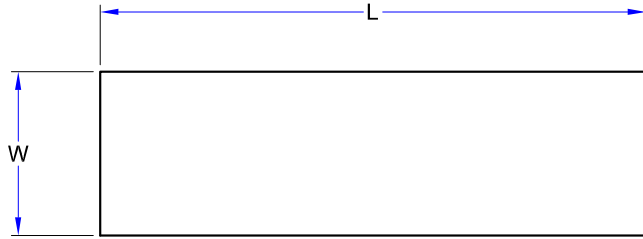


EDSC8-1548

ECONOMY DISH STORAGE CABINETS - 18GA

MODEL #	QTY
EDSC8-1548	
EDSC8-1560	
EDSC8-1572	
EDSC8-1848	
EDSC8-1860	
EDSC8-1872	

DETAILED SPECIFICATIONS



15" WIDE - ECONOMY DISH STORAGE CABINETS - 18GA

MODEL	L	W	SIZE	WT (LBS)
EDSC8-1548	48"	15"	48" X 15" X 35"	127
EDSC8-1560	60"	15"	60" X 15" X 35"	194
EDSC8-1572	72"	15"	72" X 15" X 35"	226

18" WIDE - ECONOMY DISH STORAGE CABINETS - 18GA

MODEL	L	W	SIZE	WT (LBS)
EDSC8-1848	48"	18"	48" X 18" X 35"	187
EDSC8-1860	60"	18"	60" X 18" X 35"	246
EDSC8-1872	72"	18"	72" X 18" X 35"	286

SOME UNITS SHIP UNASSEMBLED FOR REDUCED SHIPPING COST. ALL DIMENSIONS ARE TYPICAL. TOLERANCE +/- .500"
 John Boos & Co. is constantly engaged in a program of improving products and therefore reserves the right to change specifications without prior notice.



3601 S. Banker St. • Effingham, IL 62401 • PO BOX 609 • quotes@johnboos.com

112718



www.johnboos.com

945