



Model: _____ Item #: _____ Date: _____

Project: _____ Qty: _____ Approved By: _____

Royal Series Two Compartment Bar Sinks

Royal Series Underbar



KR19-22C

Specifications

- Sink Bowl**
 - 20 gauge stainless steel 10" x 14" x 10" deep
 - Furnished with 1-1/2" IPS rear corner drain and 7-1/2" overflow pipe
- Drainboard**
 - 20 gauge stainless steel reinforced with welded braces every 6"
- Front Apron**
 - 20 gauge stainless steel clad over 20 gauge galvanized steel
- Sides**
 - 20 gauge stainless steel
- Backsplash**
 - 20 gauge stainless steel
- Back & Bottom**
 - 20 gauge galvanized steel
- Legs**
 - 1-5/8" tubular 16 gauge stainless steel with grey plastic bullet foot
- Plumbing**
 - Hot/Cold Water: 1/2" IPS
 - Drain: 1-1/2" IPS
- Faucet**
 - 4" OC wall or deck mount faucet and ceramic cartridge valves

Standard Features

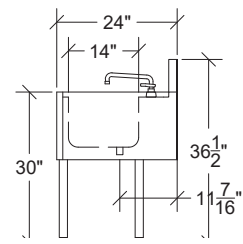
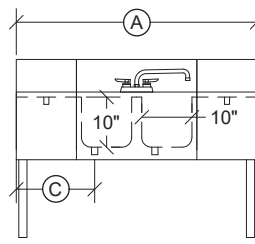
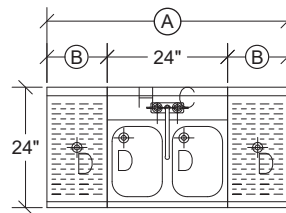
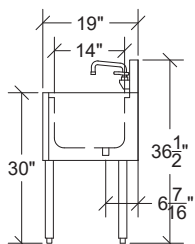
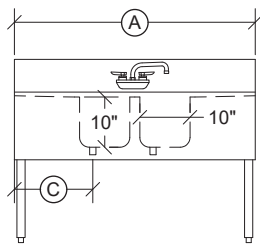
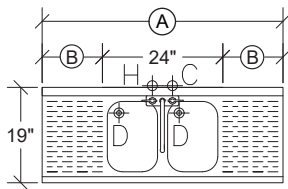
- Royal Series wall mount faucet & drains w/ overflows included
- KR19 includes a wall mount faucet
- KR24 includes deck mount faucet
- 1-1/2" left rear corner drains (Model 23-122)

WARNING: Plumbing connections should be made by qualified personnel who will observe all applicable plumbing, sanitary and safety codes.



| Model | Depth (Front to Back) | Drainboard Size | | Left Side to Drain | Bowls | Bowl Location | Wgt. (lbs.) |
|-----------------|-----------------------|-----------------|---------|--------------------|-------|---------------|-------------|
| | | (A) | (B) | | | | |
| KR19-22C | 19" | 24" | - | 4" | 2 | Center | 50 |
| KR19-32L | 19" | 36" | 12" | 4" | 2 | Left | 53 |
| KR19-32R | 19" | 36" | 12" | 15" | 2 | Right | 53 |
| KR19-42L | 19" | 48" | 24" | 4" | 2 | Left | 55 |
| KR19-42R | 19" | 48" | 24" | 21" | 2 | Right | 55 |
| KR19-42C | 19" | 48" | (2) 12" | 27" | 2 | Center | 55 |

| Model | Depth (Front to Back) | Drainboard Size | | Left Side to Drain | Bowls | Bowl Location | Wgt. (lbs.) |
|-----------------|-----------------------|-----------------|---------|--------------------|-------|---------------|-------------|
| | | (A) | (B) | | | | |
| KR24-22C | 24" | 24" | - | 4" | 2 | Center | 55 |
| KR24-32L | 24" | 36" | 12" | 4" | 2 | Left | 58 |
| KR24-32R | 24" | 36" | 12" | 15" | 2 | Right | 58 |
| KR24-42L | 24" | 48" | 24" | 4" | 2 | Left | 60 |
| KR24-42R | 24" | 48" | 24" | 27" | 2 | Right | 60 |
| KR24-42C | 24" | 48" | (2) 12" | 15" | 2 | Center | 60 |



NOTE: Letter at end of Model Number represents Bowl Location